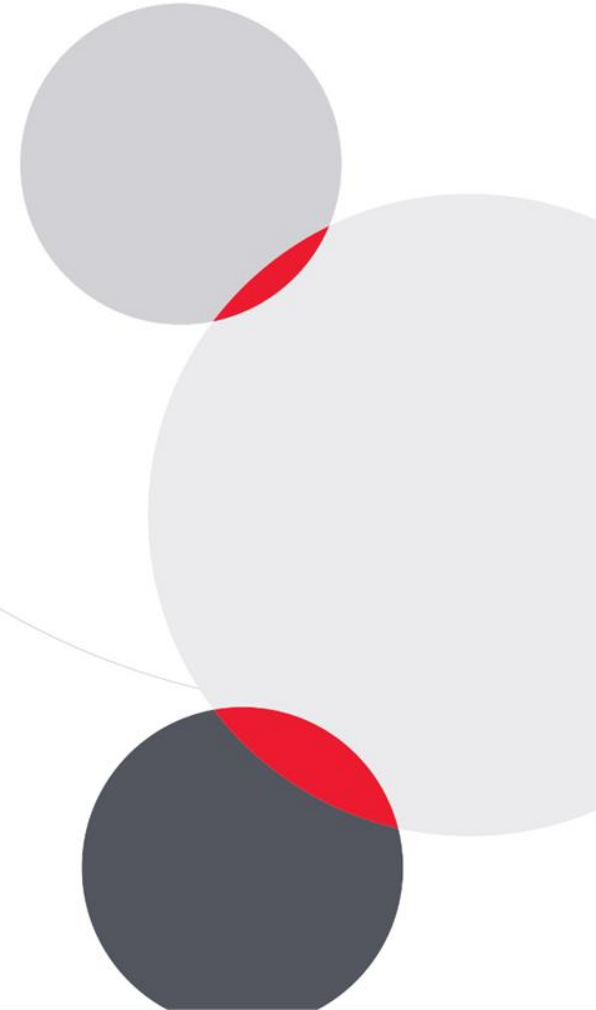


The Still Water
Participant ID: **ASDA26-50541**



Design Concept Summary

"The Still Water" originates from the pressing needs of a three-generation family sharing an overstrained **7m2** bathroom. The project addresses the scheduling conflicts between the hectic lives of a final-year student and busy parents, alongside the critical safety requirements of a grandmother suffering from joint pain and mobility issues.

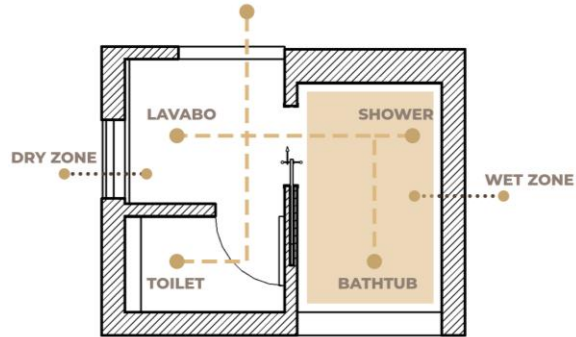
By integrating American Standard solutions, the design creates a versatile space that harmonizes diverse needs: maximum safety for the grandmother (minimizing bending, supporting balance), relaxing comfort for parents, and time-saving efficiency for the younger generation. More than just a bathroom, "The Still Water" serves as a generational bridge where physical limitations and lifestyle differences are dissolved. It is a sanctuary of connection, fostered by empathetic design and modern technology to ensure comfort and dignity for every family member.

Design: Floor Plan and Elevations

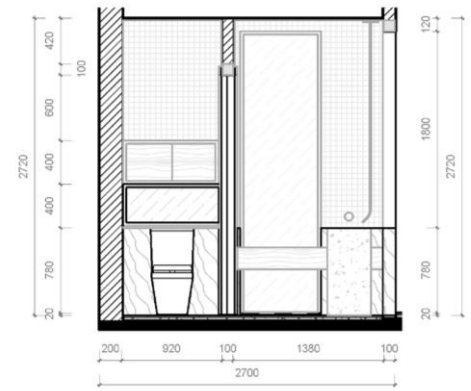
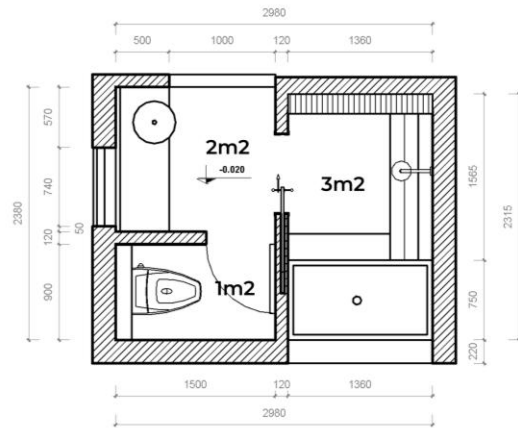
The design optimizes the **7m²** space through smart functional zoning. The **Dry Zone** (Lavabo and Toilet) is separated to allow simultaneous use, resolving scheduling conflicts for the three-generation family. The **Wet Zone** integrates both a bathtub and a shower, catering to diverse needs from relaxation to efficiency. Equipment heights in the elevations are carefully calculated to assist the grandmother with joint pain, minimizing bending and ensuring safety and dignity for all members.

**Total Bathroom Area
in sqm (including wall
& columns)**

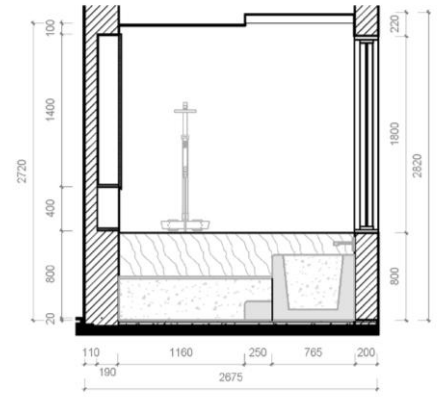
7m²



FLOOR PLAN



ELEVATIONS



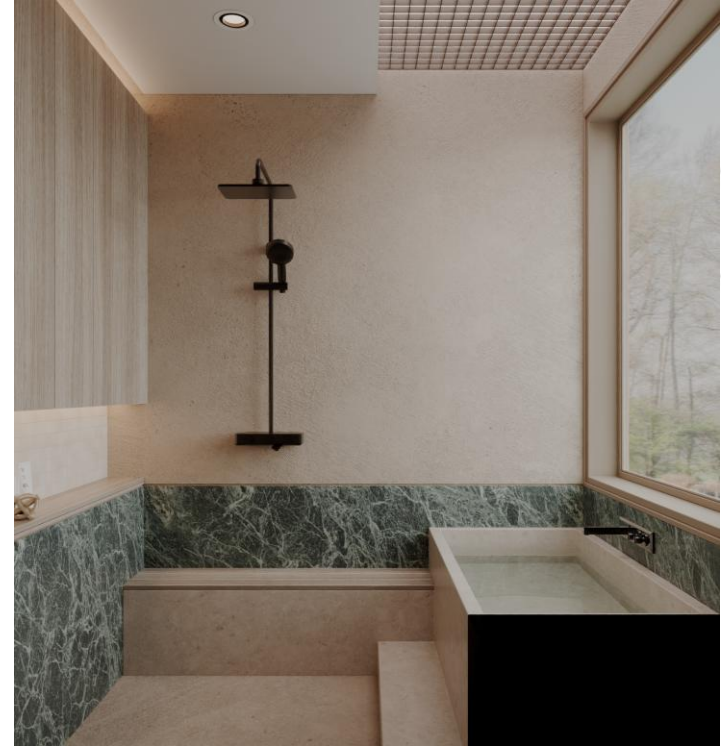
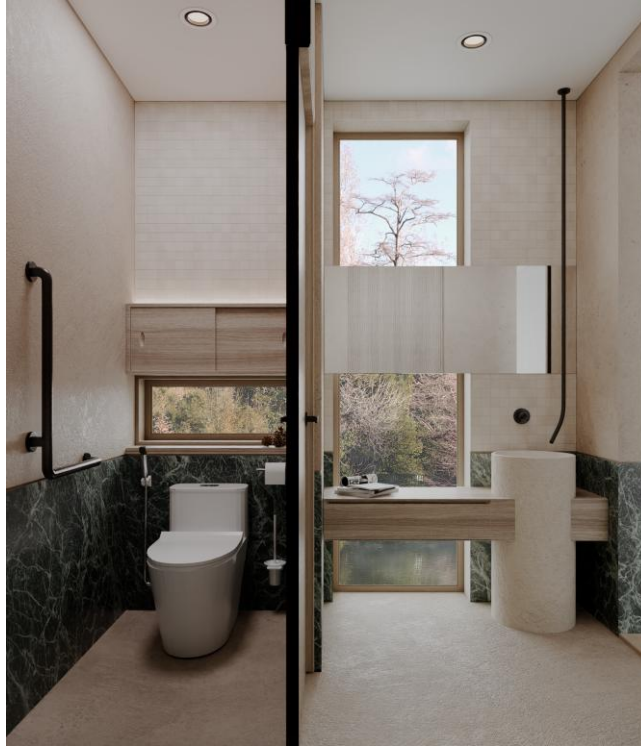
Design Visuals: Overview

The floor plan is reconfigured using a **'Split Circulation'** strategy, zoning the 7m² space into three independent modules: Lavabo, Toilet, and Shower. This solution facilitates simultaneous usage by multiple family members, effectively eliminating rush-hour conflicts. Notably, the design integrates a built-in shower bench and safety grab bars, prioritizing elderly safety while maintaining the tranquil ambiance of a home spa.



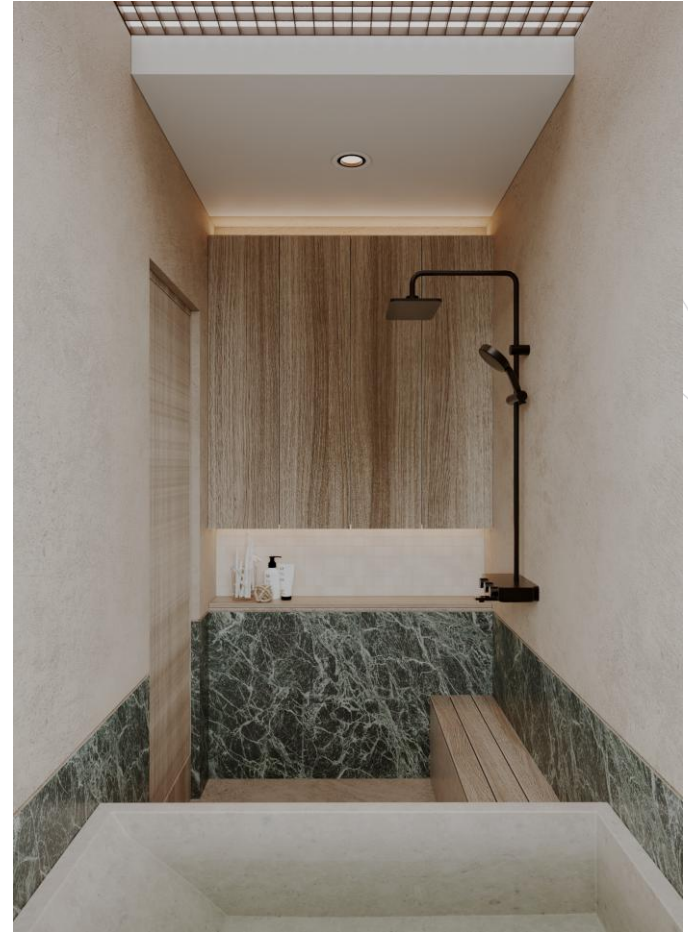
Design Visuals: Full Bathroom

The overall visual of "**The Still Water**" showcases a scientifically zoned 7m² bathroom where modern functionality blends seamlessly with rustic aesthetics to serve a three-generation family. This perspective highlights the smooth transition between the wet shower zone and the dry toilet area via wooden sliding doors and glass partitions, keeping the space open yet private. The entire scene is wrapped in the neutral tones of natural stone, complemented by the warm touch of wood-plastic composite seating and abundant natural light from large windows. The presence of minimalist American Standard fixtures, alongside safety grab bars and meticulously calculated heights, creates an integrated sanctuary that is not only convenient but also deeply empathetic and inclusive.



Design Visuals: Shower Area

The shower area in "**The Still Water**" is designed as a refined wellness retreat, integrating a bathtub and a standing shower within a 3m² space. The key functional highlight is the **stone ledge system** along the tub, providing the grandmother with a stable support for safer entry or a seat to rest while bathing. Notably, the seating surface is **finished with wood-plastic composite**, offering a warm, rustic touch while ensuring high durability in a wet environment. Combined with slip-resistant flooring, natural stone, and a luminous ceiling, this area delivers absolute peace of mind and comfort for the multi-generational family.



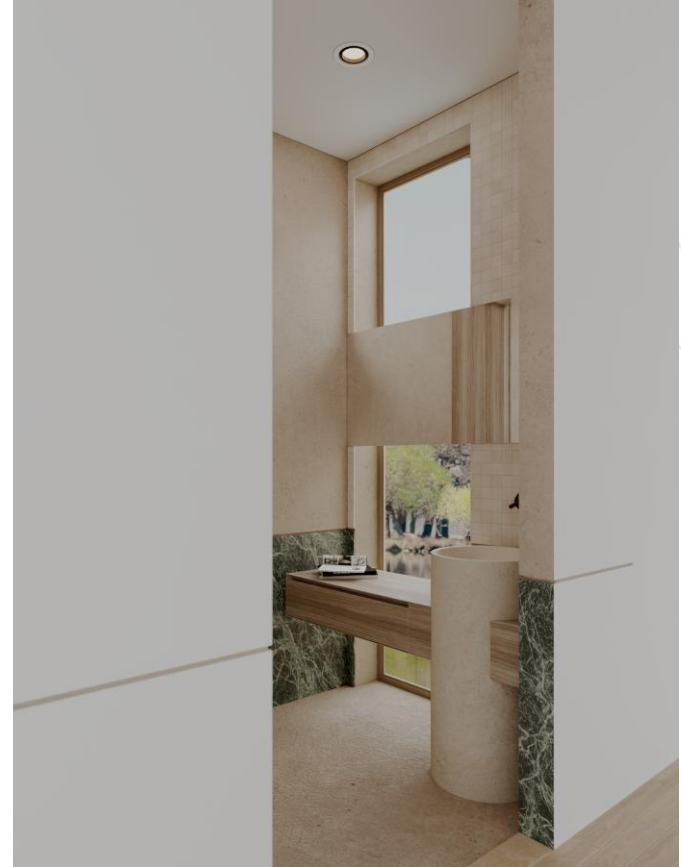
Design Visuals: Toilet Area

The toilet area in "**The Still Water**" project is designed as a fully separate zone to optimize simultaneous use for a multi-generational family, effectively resolving scheduling conflicts. The functional highlight is the sturdy L-shaped grab bar system, providing absolute safety for the grandmother when sitting or standing, addressing her mobility challenges due to joint pain. The space is meticulously planned with a modern toilet, natural light from a small window, and **wall-mounted storage cabinets** above to efficiently utilize vertical space within the 1m² area. This empathetic design solution ensures privacy while delivering comfort and peace of mind for all family members.



Design Visuals: Basin Area

The Basin Area is simply arranged as a gentle buffer for "The Still Water" project. The design features a pedestal basin and a ceiling-mounted faucet to maintain a tidy space. A small wooden counter is integrated at a lower height, specifically designed for children's easy access. To ensure safety for both the elderly and children, slip-resistant flooring is combined with rustic materials to create a warm, grounded feel. By maximizing natural light from the large window, this 2m² area remains bright and practical, perfectly meeting the daily needs of every generation.

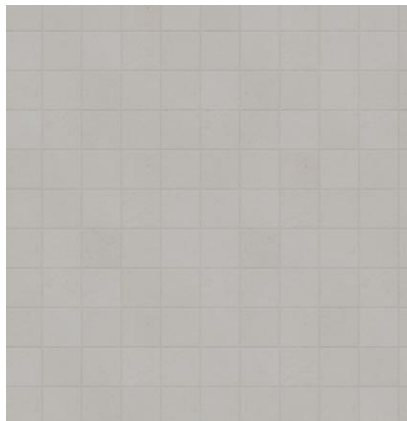


Design Visuals: Optional Images/ Information

In “**The Still Water**” space, American Standard fixtures serve as more than just functional amenities; they are comprehensive wellness solutions for multi-generational families. The blend of modern **Matt Black** finishes against rustic, raw materials—such as terracotta bricks and terrazzo—creates a symphony of technology and emotion. It is a sanctuary where every family member finds safety, convenience, and the nostalgic warmth of home.



Specifications: Colors, Materials and Finishes



MOSAIC



WOOD




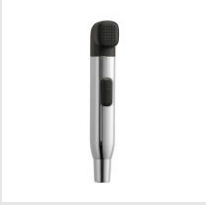


MARBLE





STUCCO WALL

American Standard Products Specified

	Product Name	Product Image	Reason for Selection
1	Signature One-Piece Toilet		Selected for its skirted design , which eliminates hidden dirt traps to ensure superior hygiene and effortless cleaning. The ergonomic height is specifically chosen to provide maximum comfort and easy accessibility for both elderly family members and adults..
2	L Nylon grab bar(Right)		This component is vital for elderly safety, featuring a Nylon finish that offers a warmer touch and a secure, anti-slip grip compared to traditional metal bars. It provides essential stability and support during the transition between standing and sitting.
3	EasySET Exposed Auto Temperature Shower Matt Black		This shower system features Auto Temperature technology to prevent accidental scalding, offering critical protection for children and seniors. Its intuitive push-button design ensures the interface is simple and easy to operate for users of all ages..
4	DuoSTiX™ Hygiene Spray (Chrome/Matte Black)		This spray offers versatile functionality with dual modes : a gentle flow for personal care and a powerful jet for efficient cleaning. The ergonomic design and removable cap facilitate ease of use while maintaining long-term sanitary standards..

American Standard Products Specified

	Product Name	Product Image	Reason for Selection
5	Acacia E Tissue Holder_Matt Black		This item was selected to complement the cohesive Matt Black aesthetic throughout the space. Its robust construction guarantees long-term durability and stability, making it perfectly suited for high-frequency daily use in a multi-generational household..
6	Acacia Evolution Toilet Brush		The wall-mounted design was chosen to keep the floor area clear, effectively eliminating tripping hazards for family members. This configuration also facilitates easier floor cleaning, helping to maintain a high standard of hygiene within the bathroom.

Appendix

Design Story – *Limit to 150 words per answer.*

- What is the inspiration for your design?

The inspiration stems from the image of still water—a symbol of peace and mutual understanding. In a three-generation family, the bathroom is often a site of scheduling conflicts and physical barriers. I aimed to create a "Still Water" space to connect family members, where worries and haste pause, making room for care and shared connection.

- How does the design fulfill the need of the target users?

The design focuses on versatility for three user groups. For the grandmother with joint pain, grab bars and calculated equipment heights ensure safe mobility. For the parents, the wet zone with a bathtub and shower offers much-needed relaxation. For the busy student, the separation of dry (Toilet/Basin) and wet zones optimizes time, allowing simultaneous use while maintaining privacy.

- How does the design fulfill the design challenge?

The main challenge was optimizing the 7m² area for diverse needs. I addressed this through smart functional zoning and clear traffic flow. Lowering the wooden counter for children, using slip-resistant materials, and maximizing natural light eliminate the feeling of confinement, transforming a purely technical space into a safe, cozy sanctuary for all generations.

- How does the choice of products contribute to the purpose of the design?

American Standard products are central to achieving both safety and aesthetics. Ceiling-mounted faucets and pedestal basins save space while providing a minimalist look. Sturdy grab bar systems offer maximum support for the elderly. The combination of modern technology and empathetic design helps dissolve physical barriers, bringing confidence and convenience to every family member.



Let your ideas transform
everyday routines into
meaningful experiences!

American Standard

