

as:da
American Standard
Design Award 2026



Inspiring Everyday Living

Design Entry Template



American Standard



Design Entry Template Guidelines

You will find the following slides in this Submission Template with specific titles and requirements for your submission as indicated below. Total number of your submission should not exceed 15 slides, beginning with (Slide 1: Project Name) and ends with (Slide 15: Qualification Checklist).

SLIDE 1:
Project Name

Input a concept title that reflects your idea.

SLIDE 2:
Design Concept

Describe your concept in a nutshell,
keep it within 150 words.

SLIDE 3:
Design: Floorplan and Elevations

Organize your drawings to tell your story.

SLIDES 4-10:
Design: Visuals

Present your concept with your renderings.

- Slide 4: Overview
- Slide 5: Full Bathroom
- Slide 6: Shower Area
- Slide 7: Toilet Area
- Slide 8: Basin Area
- Slide 9 & 10: Optional Images/Information

SLIDE 11-12:
Specifications: Colors, Materials and Finishes

SLIDE 13:
American Standard Products Specified
List down the products that are used in your design.

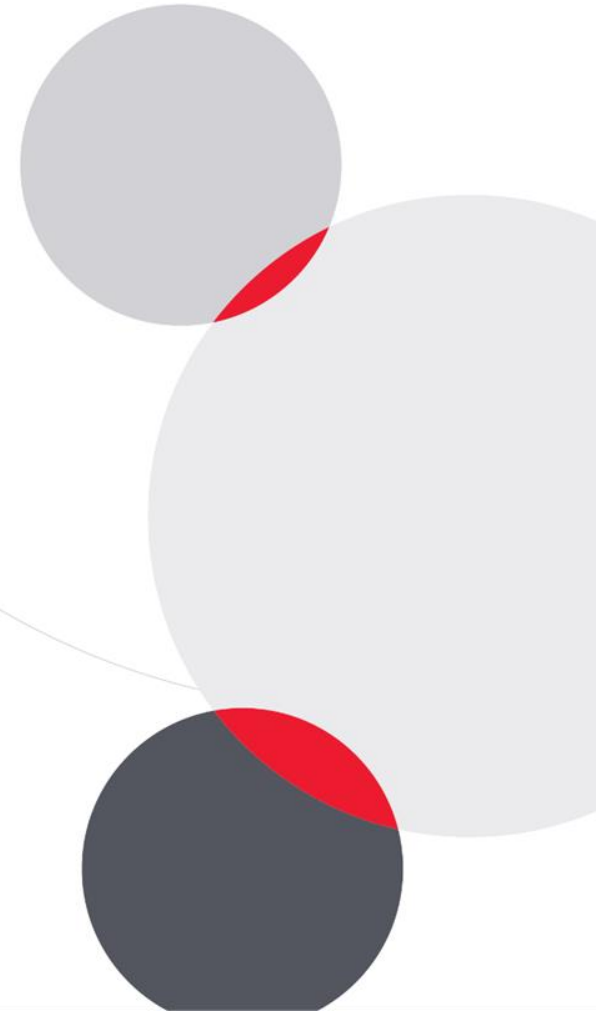
SLIDE 14:
Appendix
Elaborate your design story.

SLIDE 15:
Qualification Checklist
Before submission, review this list.

THE FAMILY RETREAT

A place to care - A space to share

Participant ID : ASDA26-51364



Design Concept Summary

THE CONCEPT

The layout is divided into three functional zones with a semi-separated design: a common basin area in the middle, with the semi-private toilet and shower rooms on either side.

This design create a flow that feels accessible and natural to support all ages with subtle grace.

Applying safety essentials, such grab bars and sanitary equipment from American Standard make it convinient and safety for all family members.

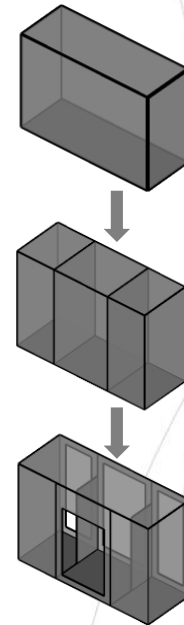
WHY IT WORKS

A Breath of Nature: Neutral warm tone, friendly materials, ventilation system and greenery turn daily tasks into a refreshing space.

Connection & Privacy: A shared central bathroom vanity brings the family together, while flexible side zones provide personal privacy when it's needed.

Designed for every age: From a nurturing environment for children, to adults sharing moments, to an elder's need for steady support, this space adapts to every generation.

**Bathroom is an indispensable part of a home
Where privacy and connection thrive together.**



Design: Floor Plan and Elevations

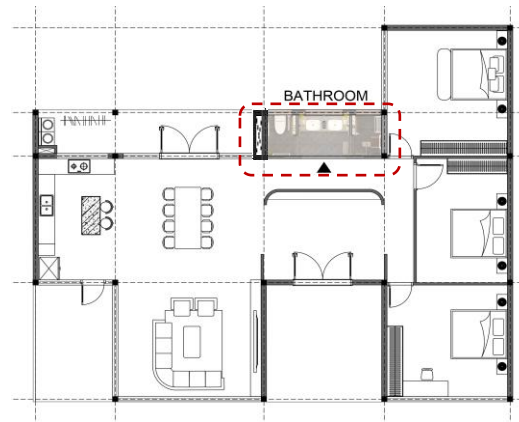
This residential bathroom floorplan is divided into three distinct zones.

The layout features a central wash area with double basins to encourage shared use. On the left, a dedicated toilet area provides privacy, while a spacious shower zone is positioned on the right

By organizing the space this way, the bathroom ensures a smooth daily flow even during busy times, ensuring every family member feels comfortable and relaxed.

**Total Bathroom Area
in sqm (including wall
& columns)**

6.966 sqm



- ① Built in cabinet – H=810mm
- ② Floor drain (slop 1.5%)
- ③ Folding Shower Stool
- ④ Flexible Safety Grab Bar

FLOORPLAN



Design: Floor Plan and Elevations

To ensure safety for both children and the elderly, this design combining practical features like curved edges, non-slip materials, and stable support furniture.

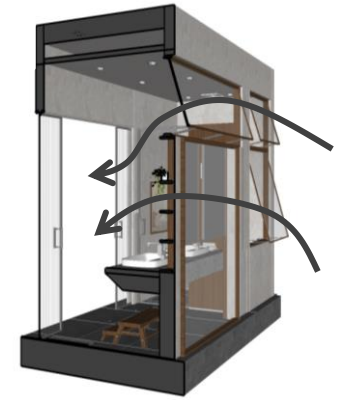
To prevent the bathroom from feeling too tall or narrow, the walls are divided into two horizontal surface:

-The lower half uses solid materials for sustainable feeling.

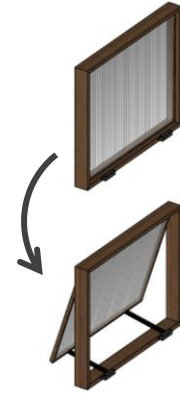
-The upper half apply lighter materials. This split visually lowers the ceiling height and less stuffy for a cramped space.



SECTION 01



VENTILATION



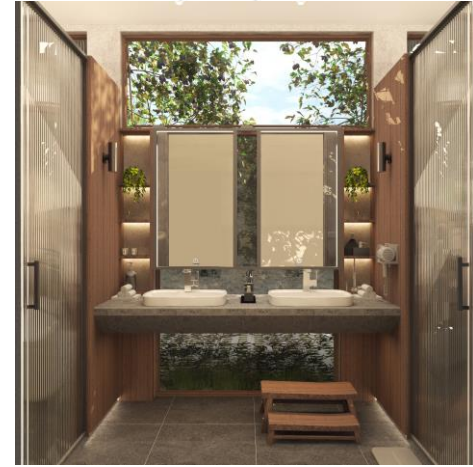
**AUTOMATIC WINDOW OPENING
WITH REMOTE CONTROL**

Ventilation:

Convenient: Using a remote control, the windows tilt open to let in fresh air and remove moisture effortlessly.

Natural Sunlight: Large windows allow deep sunlight to reach every corner, which naturally helps keep the bathroom hygienic by reducing dampness and bacteria.

Design
Visuals:
Full
Bathroom

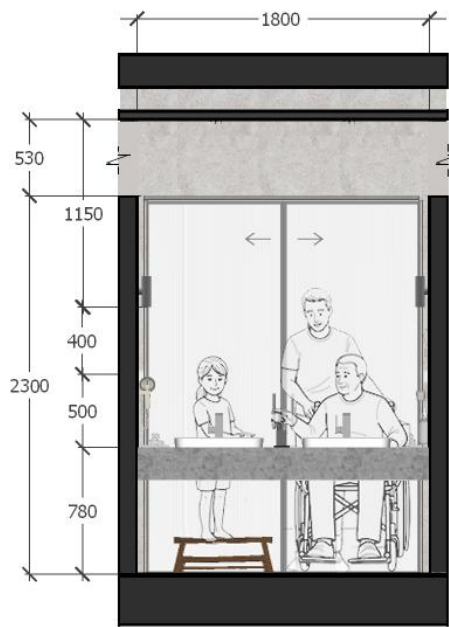


Design: Floor Plan and Elevations

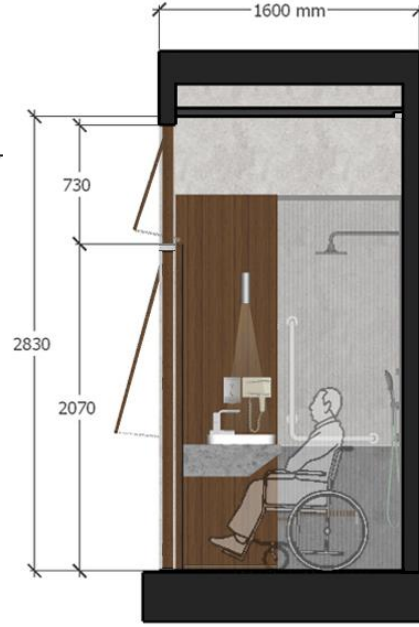


Accessibility This vanity sink works for everyone, from standing adults, kids to grandparents with mobility limitations including those using wheelchairs – the height of this sink is designed for them all to reach the water and use the mirror comfortably. Crucially, the area beneath the basin remains open to provide necessary legroom, ensuring the seniors can pull themselves close to the basin without getting stuck.

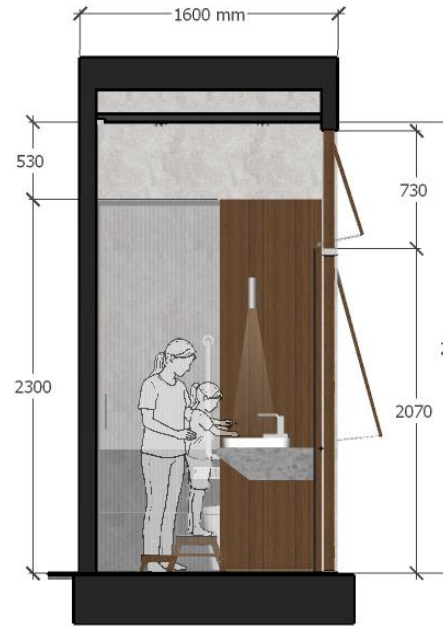
Concealed Pipe Trap : (commercially available)
-Traditional exposed pipes collect dust and making the bathroom feel unclean over a long-tirm use.



SECTION 02



SECTION 03



SECTION 04

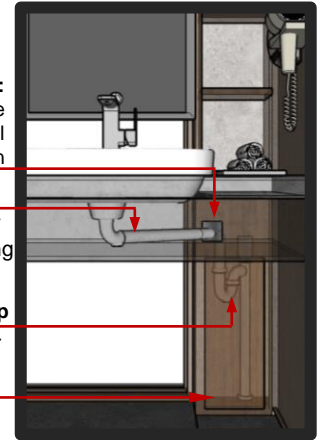
-The area beneath the sink should be raised so seniors use wheelchair can fit in.
-An extra pipe is using to go straight into the wall – that's where the basin siphon is applied. This keeps the pipes out of the way while still doing a good job of stopping bad smells, leaks,...

Cover plate:
To secure pipe and wall connection

Slope 3%
Ensure gravity flow, preventing water clogs

Deep Seal Trap
Keeping water better

Maintenance Removable Board



PLUMBING DETAIL



THE CENTRAL BASIN AREA

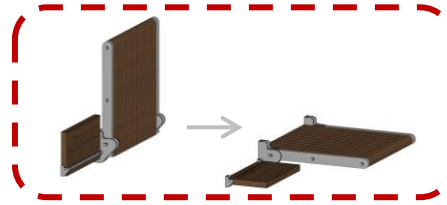
This area is a central circulation spot and gathering space at the same time.

The vanity sink is wall-hung to create an open space underneath, allowing sunlight reach every corner, both above and below. A stepping stool is included to help young kids reach the basin safely and comfortably on their own.

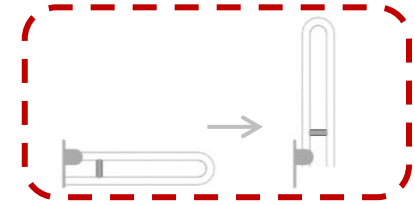
Design
Visuals:
Basin
Area



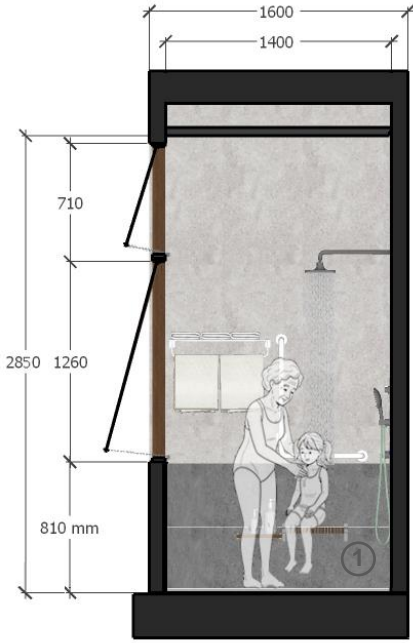
Design:
Floor Plan
and
Elevations



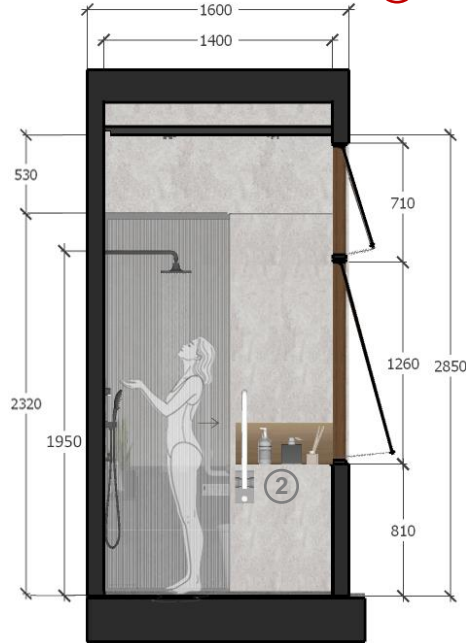
① Folding Shower Stool



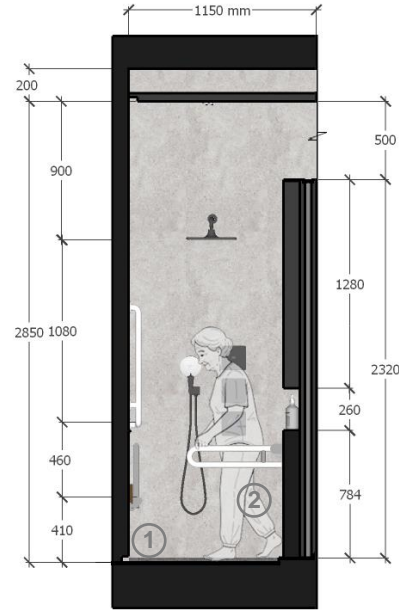
② Flexible 90 Degree Angle
Safety Grab Bar



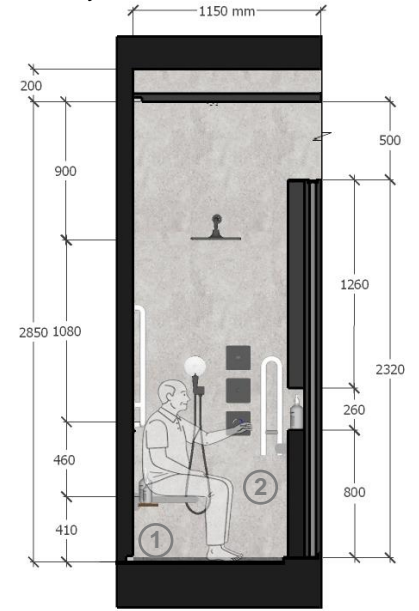
SECTION 05



SECTION 06



SECTION 07



SECTION 07

SHOWER AREA

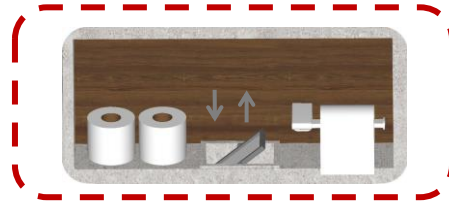
The use of flexible furnitures allows each generation to personalize their experience within this shared family bathroom.

This shower area design is built on the core values of accessibility, safety, and a pleasant experience - whether sharing the space or enjoying it alone. Blurred visibility through Fluted Glass for fall recognition to seniors and childrens, but still ensures the privacy.

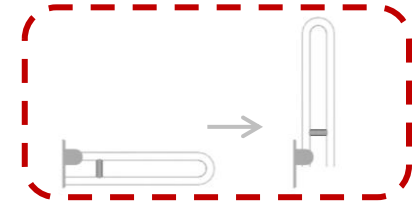
Design
Visuals:
Shower
Area



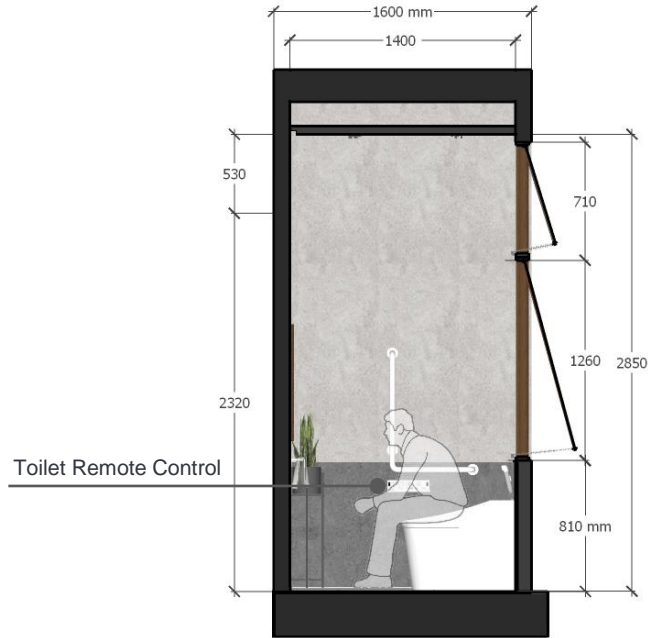
Design: Floor Plan and Elevations



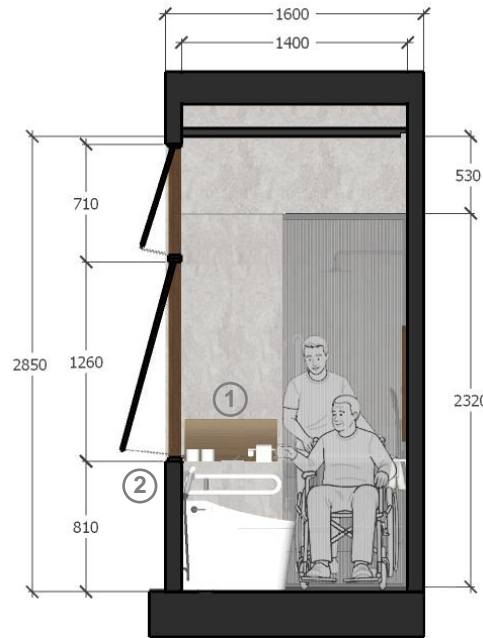
① Built in Cabinet - Hiding Wastecan



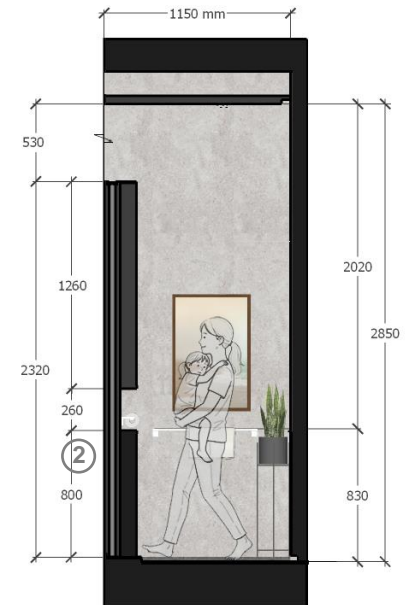
② Flexible 90 Degree Angle Safety Grab Bar



SECTION 08



SECTION 09



SECTION 10

TOILET AREA

This space focuses on independence and accessibility by combining automated technology with space-saving safety features. This all-in-one design ensures a hygienic and handy that is easy for every family member to intergrate comfortably.

Design
Visuals:
Toilet
Area



Design
Visuals:
Optional
Images/
Information



as:da
American Standard
Design Award 2026

Specifications: Colors, Materials and Finishes

By combining the raw beauty of material finish and the warm neutral tone, this material palette bathroom make a cozy nature spirit for a home.

Safety : Blurred visibility through Fluted Glass for fall recognition to seniors and childrens, but still ensure the privacy.

Accessibility: Anti-slip finishes for high-moisture areas get easier to access.

Sustainability: Eco-friendly and durable materials not only make the space welcomed but also for long-term using.

Grey Terrazzo – Slight Embossed Finish

Powder Coated Aluminum - Matte Grey Finish

Walnut Wood – Slight Embossed Finish

Fluted Glass





Snake Plant





Glazed Granite Tile - Light Matt Cement Finish





Pothos Plant

**Glazed Granite Tile
Dark Matt Cement Finish**



	Product Name	Product Image	Reason for Selection
1	Signature 550mm Counter Top Basin CCAS0420-1010410F0		<p>The soft, curved lines of this basin ensure safety and comfort for every family member. Its semi-recessed design makes it highly accessible for wheelchair grandparents, allowing them to reach their hand easier.</p> <p>Compared to fully recessed sinks, this model is more practical as it effectively prevents water from splashing out during use.</p>
2	Acacia Evolution High-Spout Basin Mixer (Side Lever) FFAS1305101500BF0		<p>This mixer provides extra height, creating a generous space for washing. The side lever is easy to grip and operate, with little effort to adjust water temperature or flow, which is essential for users with limited hand strength.</p> <p>The curved form of this Basin Mixer is also matching with the Counter Top Basin, make them a reasonable combination.</p>
3	Aerozen G2 Shower Toilet CEAS5017-0110400T0		<p>This all-in-one solution enhances hygiene and independence for the elderly through its automated cleaning features, reducing the need for difficult movements with remote control.</p> <p>Its compact shape is a right fit for modern residential bathrooms with multiple need.</p>
4	DuoSTiX™ Hygiene Spray (Chrome/Glossy White) FFASTS28-000090BT0		<p>Even with a smart automatic toilet, this manual spray is necessary for flexible cleaning tasks, such as rinsing the seat or washing the surrounding area in a place which has multiple users.</p> <p>Its handle is easy for small hands to grip and simple for seniors to operate, making it a suitable tool that supports both personal hygiene and the daily maintenance of a shared family space.</p>

	Product Name	Product Image	Reason for Selection
5	EasySet Headshower_Brushed Hard Graphite FFAS515-000AL0BF0		<p>This headshower offers a more flexible and free placement compared to traditional sets where the controls and showerhead are stucked together.</p> <p>The wide spray surface provides better coverage, ensuring a more comfortable and relaxing experience for users of all heights.</p>
6	RainClick 130 Round 3F Hand Shower_Brushed Hard Graphite FFAS9H11-000AL0BF0		<p>This hand shower is selected specifically for its flexibility in daily use. Whether it is for a quick rinse or a detailed wash, the multiple spray modes allow every family member to customize their shower experience based on their personal needs.</p>
7	EasySET _Brushed Hard Graphite - Hand Shower FFAS0925-709AL0BC0 - Head Shower FFAS0926-709AL0BC0 Conceal Thermostatic Mixer with Trim_Brushed Hard Graphite FFAS0930-709AL0BC0		<p>This controller is the right match for the headshower and hand shower system. The Brushed Hard Graphite color creates a high contrast against the wall, making it much easier for elderly users with low vision to identify and operate.</p> <p>Additionally, the thermostatic technology is a vital safety feature; it prevents accidental scalding by keeping the water temperature constant.</p>
8,9	1.Square Wall Outlet With Holder (G1/2")_Brushed Hard Graphite FFAS9143-000AL0BF0 2. 1.5m PVC Twist-free Flexible Hose_Brushed Hard Graphite FFAS9127-000AL0BF0		<p>Both products are finished in Brushed Hard Graphite to create a matching, professional look for the entire shower set.</p> <ol style="list-style-type: none"> 1.The Wall Outlet combines the water source and the holder into one unit, saving space and compact. 2.The 1.5m flexible hose allows for a wide range of motion, which is extremely practical for helping a family member to bathe or for easily rinsing down the shower floor during cleaning.

	Product Name	Product Image	Reason for Selection
10	L Nylon grab bar(Right) FFAS9405-000040BC0		<p>This L-shaped bar offering multiple grip options for those needing extra stability near the toilet or shower.</p> <p>Its nylon-coated surface stays comfortable to the touch and offers a secure, slip-resistant grip that helps prevent falls for seniors and childrens.</p>
11	90 Degree Angle Safety Grab Bar FFAS9401-000040BC0		<p>Reasonable for corners or narrow spaces, this angled bar provides a sturdy handhold for moving between sitting and standing.</p> <p>This bar can be folded down when in use for support and folded back up when not needed to save space. This flexible feature makes the bathroom much easier to move around in, especially in smaller residential layouts.</p>
12	Acacia Evolution Towel shelf FFAS1395-908500BF0		<p>This multi-purpose shelf saves space by combining a wide towel rack with a top storage area, keeping clean towels and clothes high and dry.</p> <p>Its modern, clean lines match the rest of the collection, contributing to a warm and organized family atmosphere.</p>
13,14	1.Acacia Evolution Tissue Holder FFAS1387-908500BC0 2.Acacia Evolution Towel Holder FFAS1393-908500BF0		<p>These accessories have a matching finish and easy to wipe clean.</p> <p>1. These holders help saving space, keeping the walls looking tidy and uncluttered.</p> <p>2. The towel holder is useable for areas where only a few towel is needed.</p>

Appendix

Design Story – Limit to 150 words per answer.

- What is the inspiration for your design?

*The inspiration for this design came from the three core challenges: **Cramp**, **Overload**, and **Conflict** space of multi-generation family.*

I believe that the most meaningful design is born where daily life is most difficult. In many homes, the bathroom is often a place of stress where family members feel they are "in the way" of one another.

*I am passionate about solving this because **a small space should never limit a family's quality of life**. My goal is to transform a crowded footprint into a high-productivity area that flows effortlessly. I want to replace the morning rush of "waiting in line" with a connection and sharing routine together.*

- How does the design fulfill the need of the target users?

This design allows at least 3-4 family members to use the bathroom at the same time without interruption.

By separating the basin area, toilet, and shower, I eliminated the "traffic jam" effect by making a center space for operation, ensuring a smooth and productive flow during rush hours.

This layout make a daily connection between generations while respecting the need for individual privacy.

- How does the design fulfill the design challenge?

***Purposeful Design:** By dividing the space into functional zones, this layout enhances comfort and well-being even within a limited footprint.*

***Inviting Style:** The natural, warm aesthetic creates a visually appealing place for family connection. It balances a sense of personal comfort with a shared, welcoming atmosphere.*

***Originality:** This concept is a unique perspective by solving real-life struggles through original spatial logic rather than available layouts.*

***Feasibility** The design is a realistic and practical solution specifically maded for modern residential settings.*

- How does the choice of products contribute to the purpose of the design?

***Smart Care & Hygiene** easy cleaning and accessible controls promote independence for seniors, children and high hygiene standards for the entire family.*

***Proactive Safety** Thermostatic technology and ergonomic, folding support bars provide a slip-free, anti-scald environment that protects children and the elderly. Everything has smooth, curved edges to prevent bumps and accidents in a tight space.*

***Modern Aesthetics** A cohesive, curved design across all fixtures creates a warm, inviting atmosphere the bathroom looks organized and calm instead of crowded.*



Let your ideas transform
everyday routines into
meaningful experiences!

American Standard

