



Project name:

**The Jar**

**Traditional Lifestyle In Modern Space**

Participant ID:

**ASDA26-51151**

*American Standard*



# Design Concept Summary

## The Context: A Shifting Society

In modern Vietnam and across Southeast Asia, we are seeing a significant social shift. As young professionals migrate to major cities for their careers, they often bring their aging parents to live with them. This restores the traditional multi-generational household—bringing several generations together under one roof.

## The Challenge: The Modernity Gap

While modern technology has drastically improved our quality of life and convenience, it has also created a "usability gap." Our elders, who are deeply rooted in traditional lifestyles, often find it difficult to adapt to complex, high-tech environments.

## The Solution: Bridging the Divide

This design specifically addresses this friction, focusing on one of the most critical areas of the home: the bathroom. Our goal was to bridge the generational divide by balancing:

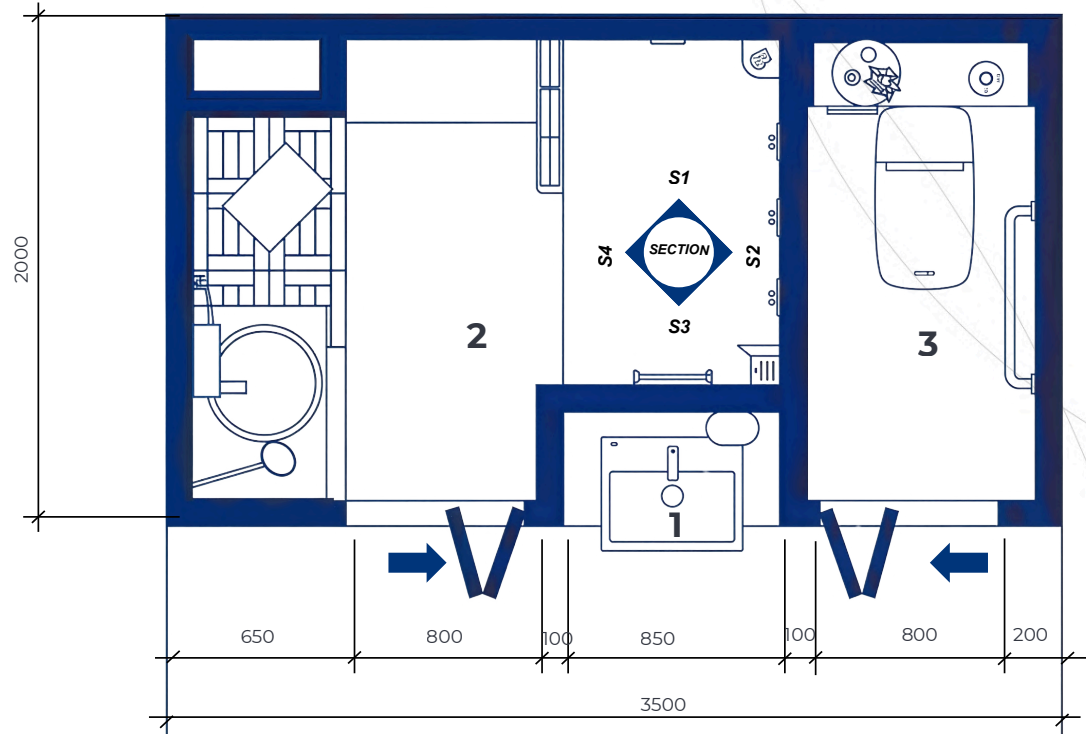
- **User Behavior:** Catering to the different physical needs of both young and old.
- **Aesthetics & Function:** Maintaining a modern look without sacrificing utility.
- **Safety:** Ensuring a secure environment for elderly family members.



# Design: Floor Plan and Elevations

## Space Efficiency: The "3.5" Zoning Concept

- **The Seated Bath Area:** Custom-engineered for Vietnam's "Boomer" generation. This space honors traditional bathing rituals, optimized for the ergonomic use of the basin and ladle.
- **The Standing Shower:** Featuring recessed wall and ceiling showers that recreate the nostalgic "rain bath" experience—offering a safe, purified alternative to the context of modern Hanoi's pollution.
- **The Transitional Vanity:** Strategically placed near the exit to maximize utility and streamline "final touch" preparations before leaving the home.
- **Private Water Closet:** A fully enclosed, independent unit designed for peak hygiene and absolute privacy.



Floor Plan

1. Washbasin Space (0.38 m<sup>2</sup>)
2. Bath Space (3.71 m<sup>2</sup>)
3. Toilet Space (1.62 m<sup>2</sup>)

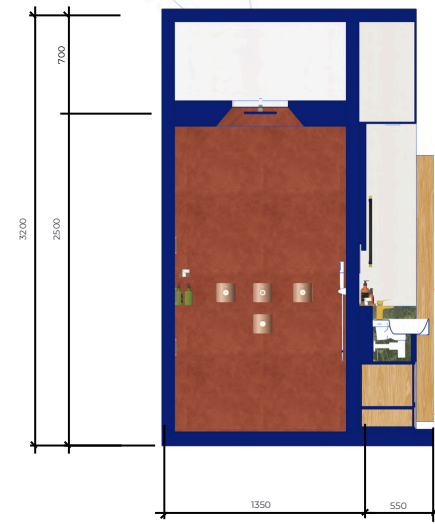
Total Bathroom Area  
in sqm (including wall  
& columns)

7 sqm

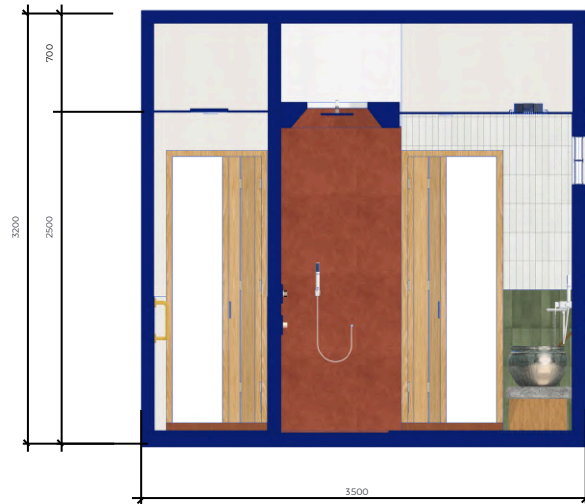
# Design: Floor Plan and Elevations



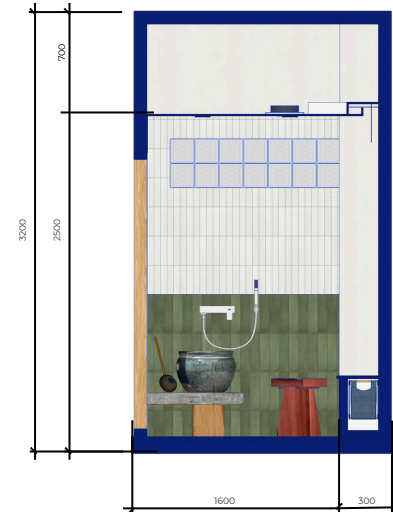
SECTION 1



SECTION 2



SECTION 3



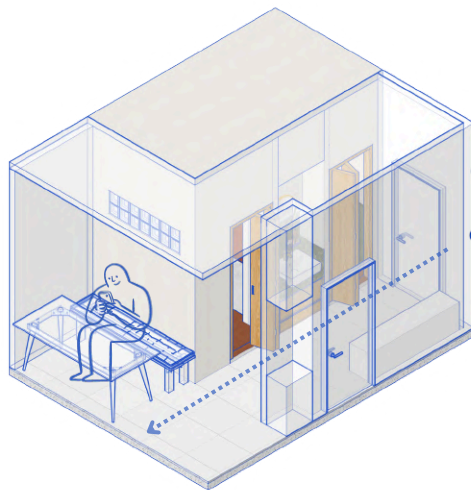
SECTION 4

# Design Visuals: Overview

Our **Multi-Generational** Household We are looking at a family of five **living under one roof**, representing three distinct generations:

- Grandmother Ly (62): Representing the senior perspective.
- Parents: Do (36) and Trang (34).
- The Children: Hoang (7) and Linh (5).

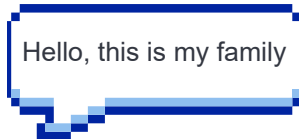
The Challenge: Three generations bring **three distinct lifestyles, different daily behaviors, and unique spatial needs.**



Entry

 Bathroom Location

Located in a 100 m2 apartment in Hanoi, this bathroom serves a multi-generational family living in a three-bedroom, two-bathroom home.



Grandma Ly (62y)



Parents Do (36y) and Trang (34y)



The Children Hoang (7y) and Linh (5y)

Design  
Visuals:  
Full  
Bathroom



Washbasin Space



Seated Bath Space



Standing Bath Space



Restroom Space

## Design Visuals: Shower Area

**Standing Bathing Area:** Inspired by childhood memories of bathing in the rain in the countryside, but current pollution and social conditions no longer allow for safe rain bathing, especially for young children.

**Seated Bathing Area:** This space is designed based on the bathing habits of older generations in Vietnam, who are accustomed to scooping water from basins or jars and pouring it over themselves. Forcing the elderly to bathe in the same way as younger generations is impossible, as they have been accustomed to traditional bathing methods their whole lives.



Standing bathing area

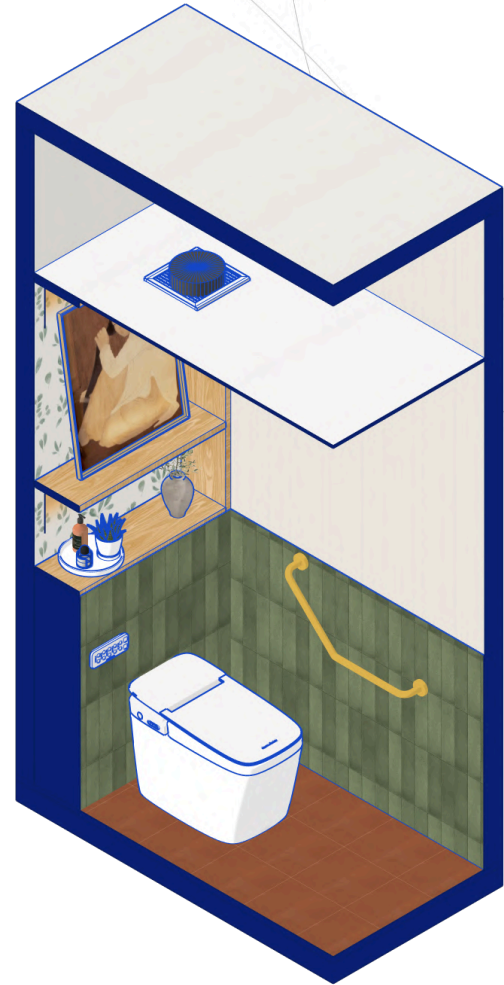
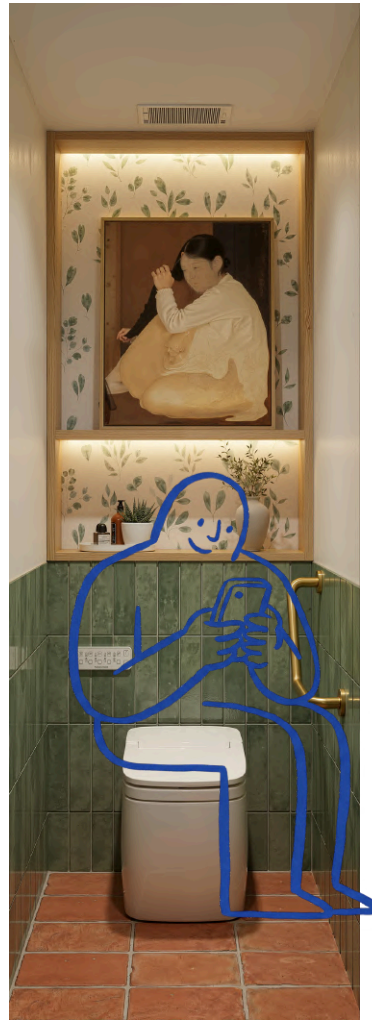


Seated bathing area

# Design Visuals: Toilet Area

## Restroom Area:

The bathroom area is thoughtfully equipped with convenient handrails and a smart toilet with integrated modern functions, ensuring safety and independence for elderly family members.

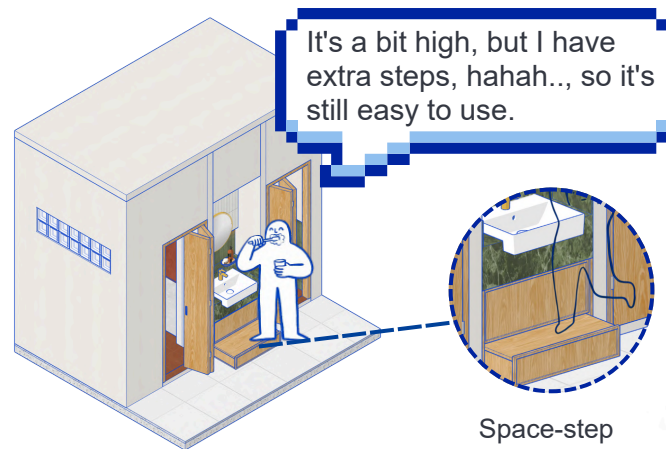
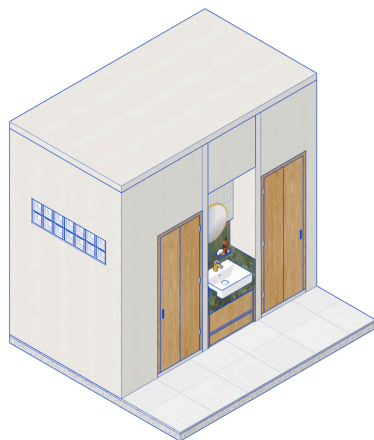


# Design Visuals: Basin Area

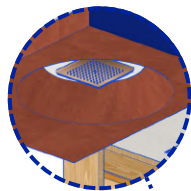
## Washbasin Area:

Strategically positioned near the exit for convenience in daily activities. This is the final stop where parents can refresh themselves and prepare for the day.

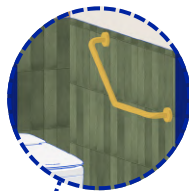
Drawers provide easy access to supplies, and the “space-step” for young children to use the washbasin.



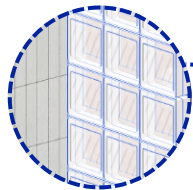
# Design Visuals: Optional Images/ Information



The transparent ceiling allows a large amount of light to enter without causing glare.



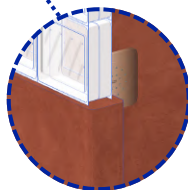
Handrails for the elderly



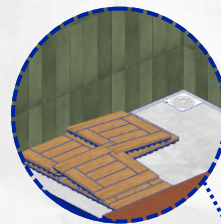
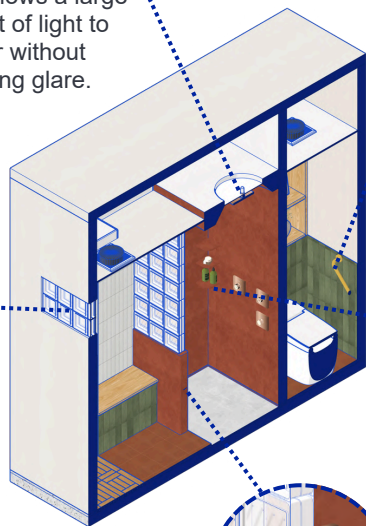
Glass tiles have the ability to penetrate light and maintain privacy



Curved corners for safety



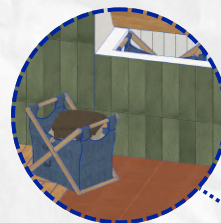
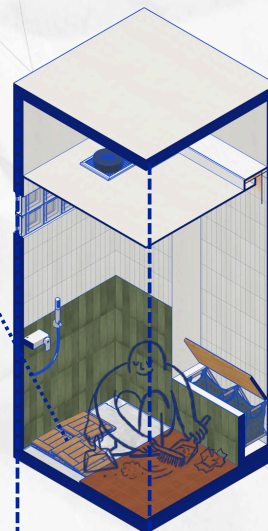
Curved corners for safety



**Teak Wood Panels**  
(300 x 300 mm)

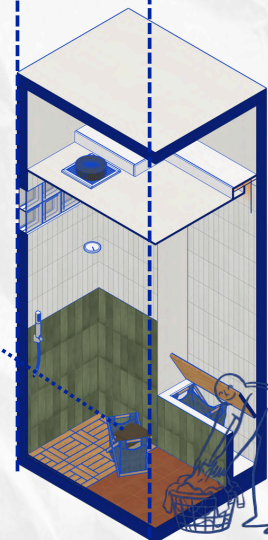
Easy to clean, waterproof, termite-resistant, warp-resistant, and repels harmful insects.

The ability to retain warmth and prevent sudden temperature changes.

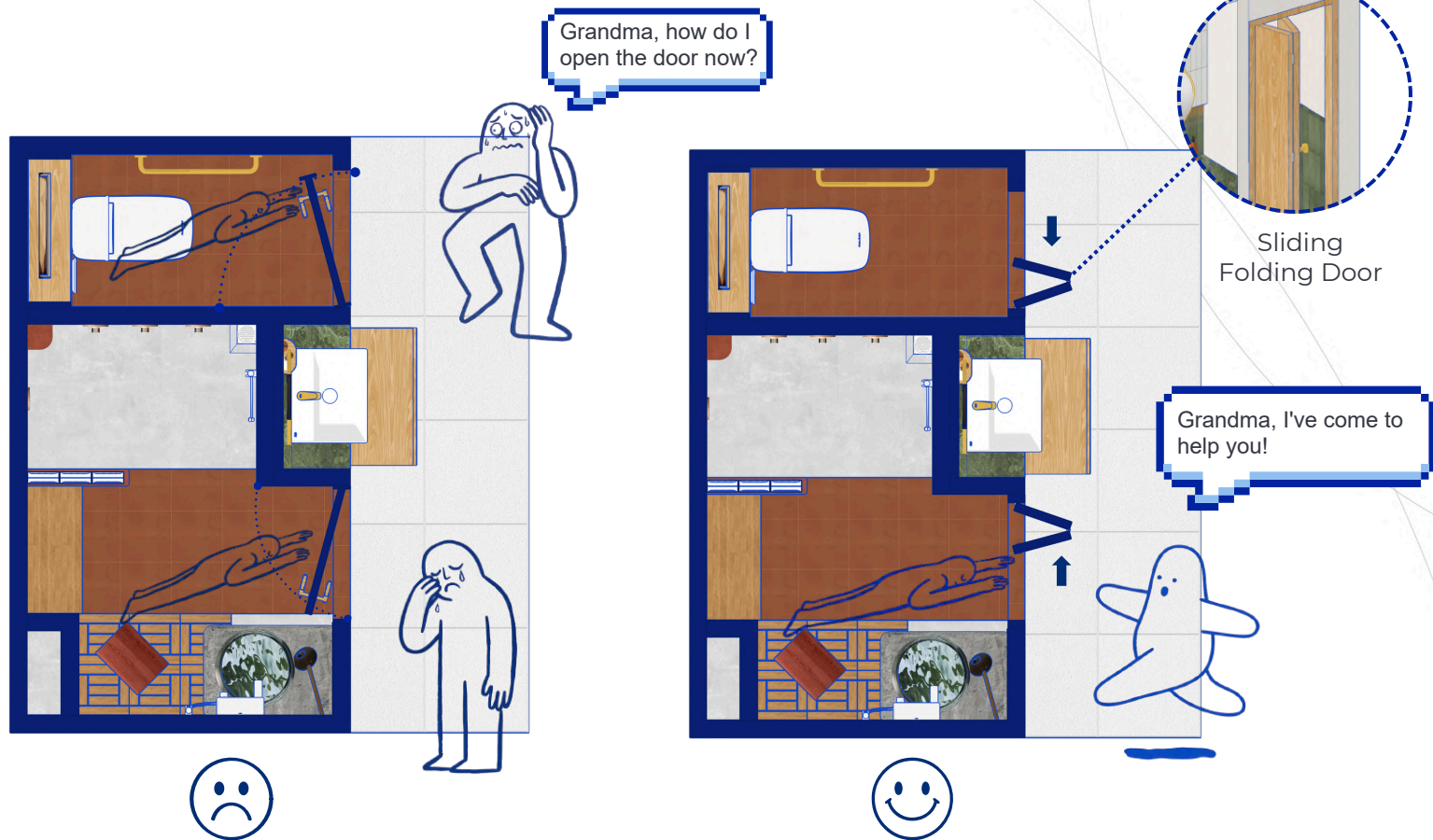


**Flexible Foldable Basket**

Used for storing dirty clothes, kept under a cabinet with a flip-up lid.



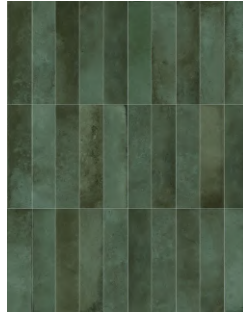
Design  
Visuals:  
Optional  
Images/  
Information



- **Space-Saving Design:** Bi-fold mechanism optimizes floor area.
- **Emergency Accessibility:** Outward-opening doors prevent blockage if someone falls or suffers a medical crisis inside.
- **Safety First:** Enables rapid response without causing further injury to the occupant.

# Specifications: Colors, Materials and Finishes

- **The Palette:** A neutral base paired with earthy browns and organic greens creates a warm, **inviting atmosphere**—the **perfect sanctuary for unwinding after a long day.**
- **Practicality:** We've prioritized **high-performance** materials that are **waterproof, mold-resistant, and effortless to maintain.**
- **The Balance:** By playing with **contrasts**—mixing **warm and cool** tones with **glossy and rugged** textures—we achieve a space that is both **visually striking** and **psychologically grounding.**



Green wall tile brick



Teak Wood



Glass brick



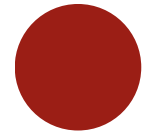
White wall tile brick



Wallpaper







Terracotta brown waterproof paint







Color

# American Standard Products Specified

	Product Name	Product Image	Reason for Selection
1	Acacia Evolution Exposed Bath & Shower Mixer		Modern, minimalist design, easy to maintain. <b>Water-saving technology, user-friendly interface, suitable for the elderly.</b>
2	Acacia SupaSleek Semi-Counter Basin 550mm Single-Hole		<b>The semi-recessed design of the table saves space, making it suitable for small and medium-sized spaces.</b>
3	DuoSTiX™ Hand Shower (Chrome/Glossy White) with hose and hanger		Unique shape, hygienic, and effectively <b>usable for showering and cleaning purposes</b>
4	PLAT 4/6L Smart Toilet (Auto Seat and Music Function)		<b>Automatic features such as flushing and door opening/closing, heating and music playback capabilities, along with a minimalist, user-friendly control panel, make it easy for the elderly to use.</b>

# American Standard Products Specified

	Product Name	Product Image	Reason for Selection
5	Body Showers with conceal body(G1/2")_Polished Warm Sunset		Minimalist design with many <b>flexible layout</b> options depending on usage needs.
6	EasySET Shower_Polished Warm Sunset		Safe to use with a stable heated mixer, <b>easy to operate, suitable for all users.</b>
7	Conceal Thermostatic Mixer with Trim_Polished Warm Sunset		Safe to use with a <b>stable heated mixer, easy to operate, suitable for all users.</b>
8	Signature Single Hole Basin Mixer_Polished Warm Sunset		Minimalist design, unique and elegant colors. <b>Water-saving technology</b> and a <b>simple, user-friendly shape</b>

# Appendix

## Design Story – Limit to 150 words per answer.

- What is the inspiration for your design?

*This design is born from the cherished echoes of childhood—rainy days, games of hide-and-seek, and the simple joy of playing with water in my grandmother’s traditional clay jars (cái lu). By weaving these nostalgic fragments with cutting-edge technology and cultural heritage, we have created a personalized sanctuary that honors the past while serving the diverse needs of a modern family.*

- How does the design fulfill the need of the target users?

*This design transcends basic utility by dividing the space into “three and a half” distinct zones, allowing for simultaneous use without interference. It ensures safety and convenience for every generation. Beyond physical layout, the design honors the diverse habits and cultural nuances of each family member, bridging the gap between traditional lifestyles and modern needs.*

- How does the design fulfill the design challenge?

*We redefined the bathroom not just as a functional space, but as a sacred, ritualistic place. It's where daily routines become inspiring moments. Here, the elderly find comfort in their familiar rhythms, while children discover a magical world and play, transforming everyday tasks into exciting explorations.*

- How does the choice of products contribute to the purpose of the design?

*Product selection plays a crucial role in this design. The chosen products prioritize human health and safety. We selected minimalist, user-friendly devices, especially those suitable for the elderly. The application of modern products allows older adults to maintain their traditional lifestyles while ensuring their health and cultural well-being in a better environment.*