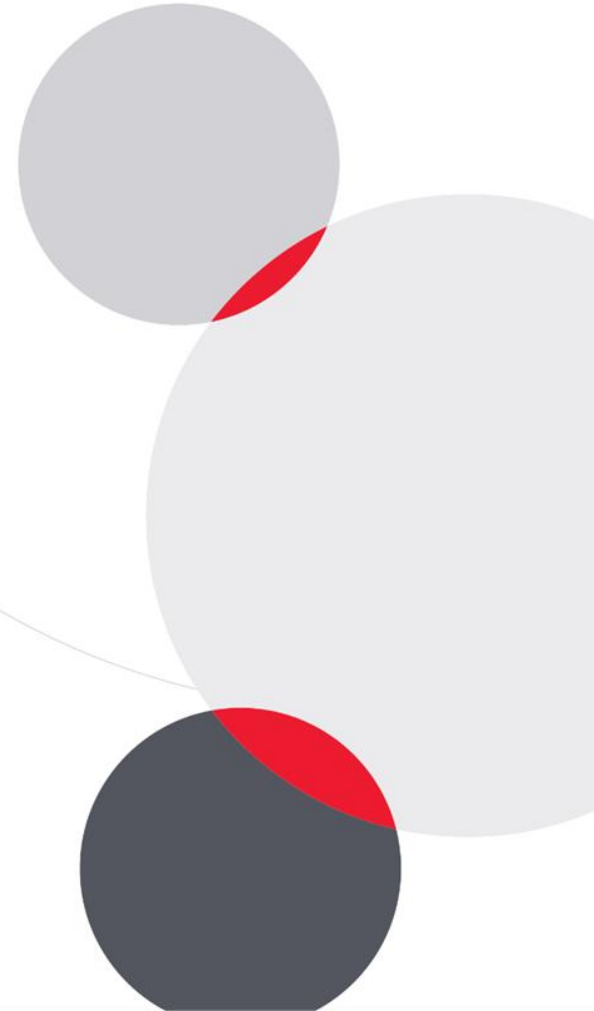




Seamless Living,
Every Stage of Life
ASDA26-40956

American Standard



Design Concept Summary

Concept : Seamless Life

Seamless Life represents a smooth, continuous way of living that supports people through every stage of life without disruption. The design focuses on creating key elements that adapt naturally to different age groups while remaining part of one cohesive space. For children, features such as a step stool integrated into the sink area help increase height safely and encourage independence. For adults, the space transforms into a functional and elegant dressing table that supports daily routines. For elderly users, safety becomes the priority through anti-slip handrails and accessible bathroom design. Essential functions are carefully added to enhance everyday life, including night lights that provide gentle illumination during the night, reducing accidents and creating comfort. Fiber optic lighting adds brightness, playfulness, and a sense of joy, especially for children. Seamless Life is about thoughtful design that evolves with users, ensuring comfort, safety, and beauty throughout all stages of living.



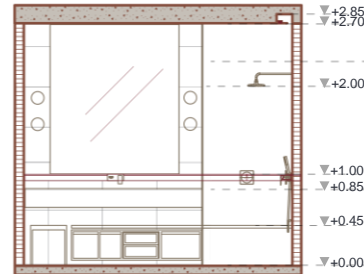
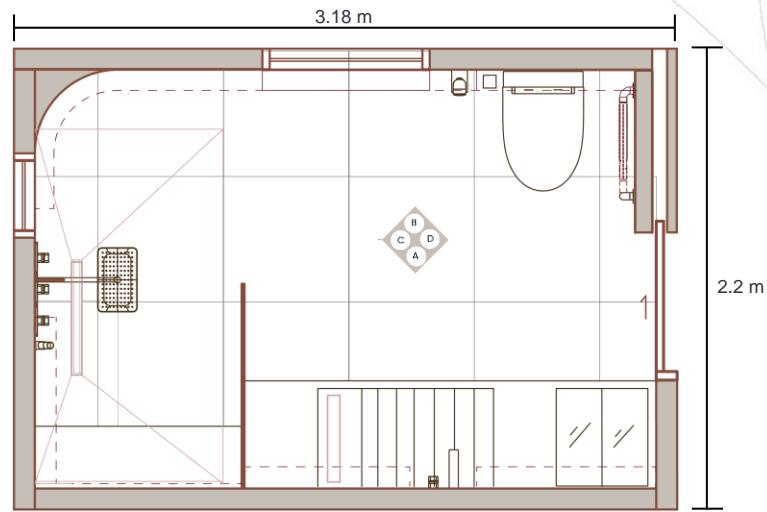
Design: Floor Plan and Elevations

The layout is designed with a clear separation between wet and dry zones to improve safety and usability. Openings are incorporated to enhance natural ventilation while still allowing the space to be used for drying clothes. In the sectional view, the placement of handrails and water fixtures is clearly shown to be connected and continuous, ensuring ease of movement and accessibility. This arrangement supports a seamless flow of use, reduces accidents, and allows users of all ages to navigate the bathroom comfortably and safely.

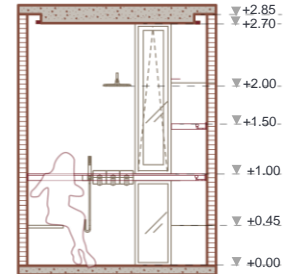
**Total Bathroom Area
in sqm (including wall
& columns)**

7 sqm.

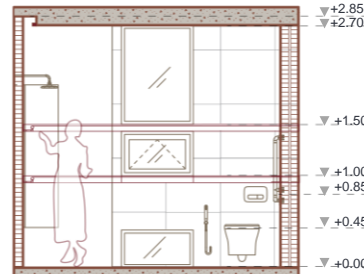
as:da
American Standard
Design Award 2026



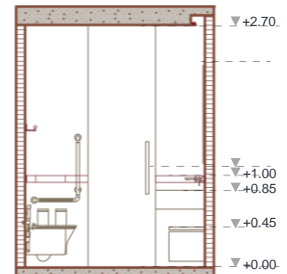
ELEVATION A



ELEVATION B



ELEVATION C



ELEVATION D

We approached the design by considering the bathroom within the context of a single-family home, whether a one-story or two-story house. We developed a set of representative user personas based on common, everyday characteristics to ensure the design can accommodate a wide range of people. This approach allows the design to be flexible, inclusive, and adaptable for real-life living situations.



Age: 6 years old
Gender: Female
Height: 110 cm
Behavior & Needs:
Frequent, short bathroom visits. Prefers bright spaces and needs child-height features for safe, independent use.

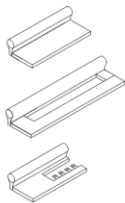
Age: 35 years old
Gender: Female
Height: 160 cm
Behavior & Needs:
Uses the bathroom for daily hygiene, dressing, and makeup. Occasionally does light laundry. Prefers organized, easy-to-access storage.

Age: 36 years old
Gender: Male
Height: 175 cm
Behavior & Needs:
Uses the bathroom for toileting, showering, and dressing. Prefers organized storage and convenient hanging space for clothes.

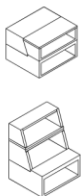
Age: 65 years old
Gender: Female
Height: 155 cm
Behavior & Needs:
Moves slowly and requires support points for safety. Frequent urination, especially at night, requiring adequate lighting and a safe, easily accessible bathroom environment.



Design Visuals: Full Bathroom



The rail is designed with a rounded profile for a comfortable grip, especially for the elderly, while integrating multiple functions into the rail itself, including a soap holder, a towel bar, and utility hooks.



The children's step stool is designed to fold into a low chair for sitting while doing laundry, and can be conveniently stored back into the shelving unit when not in use.



Design Visuals: Shower Area

In the shower zone, handrails are seamlessly connected from the shelving unit in the washbasin area, creating continuity in both function and movement. A shower seat for elderly users is integrated and extends from the storage cabinet beneath the washbasin. This connected design enhances safety, accessibility, and ease of use while maintaining a cohesive and seamless bathroom layout.



Design Visuals: Toilet Area

The toilet area is equipped with handrails to support elderly users and enhance safety during use. The towel rail is designed to be adjustable and continues seamlessly from the shower zone, allowing flexible and convenient use. This connected arrangement improves accessibility, supports different user needs, and reinforces a smooth flow between bathroom zones.

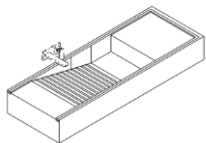


Design Visuals: Basin Area

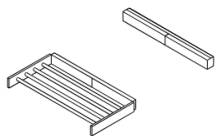
A compact vanity table is designed with integrated storage and complete makeup lighting, providing full functionality within a small footprint.



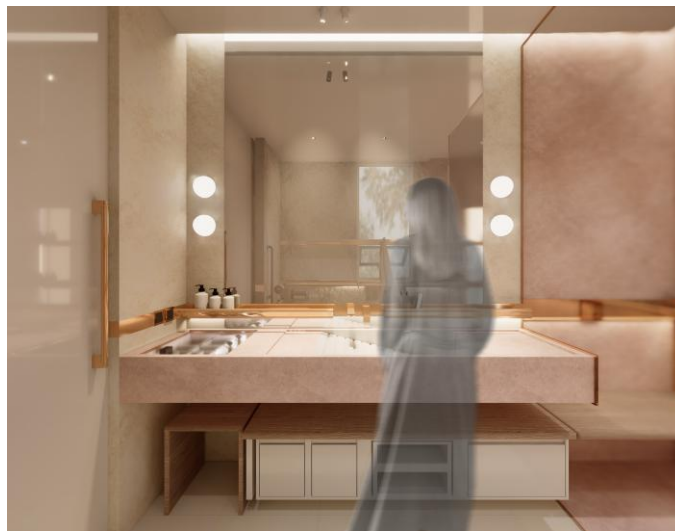
Design Visuals: Optional Images/ Information



The bathroom is equipped with an oversized basin featuring a subtly textured surface, allowing it to support various washing tasks while maintaining both durability and everyday practicality.



A foldable drying rack is also integrated to support this function, seamlessly designed to blend with the bathroom's grab bar for a clean and cohesive appearance.



Design
Visuals:
Optional
Images/
Information

FIBER OPTIC LIGHT

Fiber optic lighting is concealed within the wall to create a more engaging and visually stimulating environment for children when using the bathroom.

NIGHT LIGHT

The grab bar is designed with a concealed night light integrated along its underside, providing gentle illumination for nighttime bathroom use without disturbing sleep.



FIBER OPTIC LIGHT



NIGHT LIGHT

Specifications: Colors, Materials and Finishes

The materials and colors were selected to create a soft and calming atmosphere suitable for all age groups. Neutral and warm tones are used to make the bathroom feel gentle, safe, and comfortable throughout every stage of life. The colors of the sanitary products are carefully matched with the wall finishes to ensure visual harmony and continuity. This seamless color coordination helps reduce visual contrast, making the space feel more balanced, welcoming, and easy to use for everyone.



Specifications: Colors, Materials and Finishes

This image represents the overall atmosphere created from the combination of selected materials and the use of lighting. The design aims to create a warm, gentle environment that feels comfortable and welcoming for everyone.














American Standard Products Specified

Use the space on the right to:

1. Indicate the list of American Standard products used with the template on the right.

1. State the reason for selecting each product and why you believe it addresses the needs of travelers in hospitality bathroom spaces.

You may use more than one slide if required.

	Product Name	Product Image	Reason for Selection
1	Signature Wall-Hung Toilet		Selected for easy cleaning and improved accessibility for all ages.
2	L Nylon grab bar(Left)		Selected to support elderly users and improve safety during use.
3	DuoSTiX™ Hygiene Spray (Full Glossy White)		Selected for hygiene, ease of use, and seamless visual integration.
4	Acacia Evolution Toilet Brush		Selected for its concealed design that maintains a clean appearance.
5	Slim Smart Washer 3		Selected to enhance comfort and hygiene for daily use.
6	Chrome Concept Pillow button		Selected for ergonomic design and ease of operation for all users.
7	EasySet Headshower_Polished Warm Sunset		Selected to provide comfort and add a warm, calming tone.
8	Signature Concealed Shower Mixer_Polished Warm Sunset		Selected for a clean concealed design and color coordination with the grab bars.
9	DuoSTiX™ Hand Shower (Chrome/Matte Black) with hose and hanger		Selected for flexible use and improved accessibility.
10	Body Showers with conceal body(G1/2")_Polished Warm Sunset		Selected for comfort and color consistency with the grab bars.
11	Signature Wall Mounted Basin Mixer_Polished Warm Sunset		Selected to save space and visually connect with the grab bars.

Appendix

Design Story – *Limit to 150 words per answer.*

- What is the inspiration for your design?

The design is inspired by the concept of “Seamless Life,” which focuses on creating a living space that supports users throughout every stage of life. As people grow older, their needs change, but the space should remain functional and comfortable. This concept aims to design elements that adapt naturally over time, providing continuity, safety, and ease of use in everyday life.

- How does the design fulfill the need of the target users?


The design meets user needs by integrating functions suitable for different age groups. Children are supported with step features for easier access, adults benefit from functional daily-use elements, and elderly users are protected through safety features such as handrails and anti-slip surfaces. Lighting elements also improve comfort and visibility for all users.

- How does the design fulfill the design challenge?

The design addresses the challenge by creating a single space that can adapt to changing user needs over time. Instead of separate designs for each age group, multifunctional elements are integrated to ensure long-term usability, safety, and aesthetic consistency within one cohesive design.

- How does the choice of products contribute to the purpose of the design?

The choice of products is based on functional needs and their ability to blend seamlessly into a unified design. Each product is selected to connect visually and practically with others, creating a harmonious environment that supports different life stages. Rather than standing out individually, the products work together as one system, allowing the space to remain adaptable, cohesive, and easy to use while reflecting the concept of “Seamless Life.”

- 
- **Check if completed:**
 - Participant ID is indicated on Slide 1 – only one participant per entry (no group work) and one submission per login account
 - Entry is an original design by the participant
 - Entry is complete in the required template
 - Size of bathroom in design entry is within the allowable range
 - Participant is not a relative to LIXIL employees and/or Closely Related Persons of LIXIL employees and/or of the judges
 - Participant resides within the participating countries on a full-time basis and the participant is physically attending their studies (in any manner) at a university or educational institution situated outside of the specified countries.
Participating countries are ANZ (being Australia and New Zealand), Indochina (being Cambodia, Laos, and Myanmar), Indonesia, Philippines, Thailand, and Vietnam.
 - Only American Standard products are used in renderings