

**Growing Spaces**  
An Adaptable Bathroom  
for Shared Living  
ASDA26-30250



# Design Concept Summary

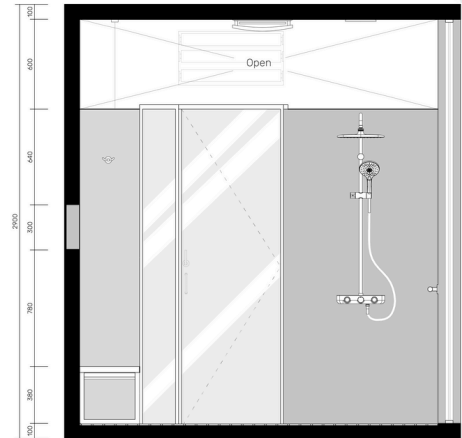
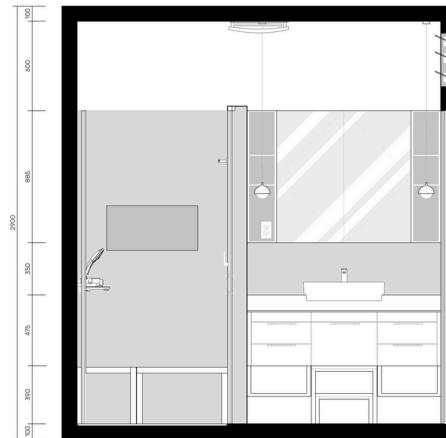
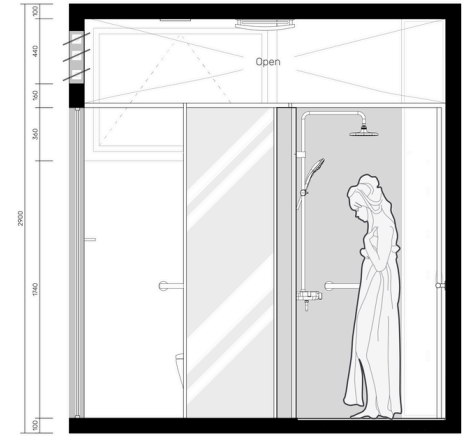
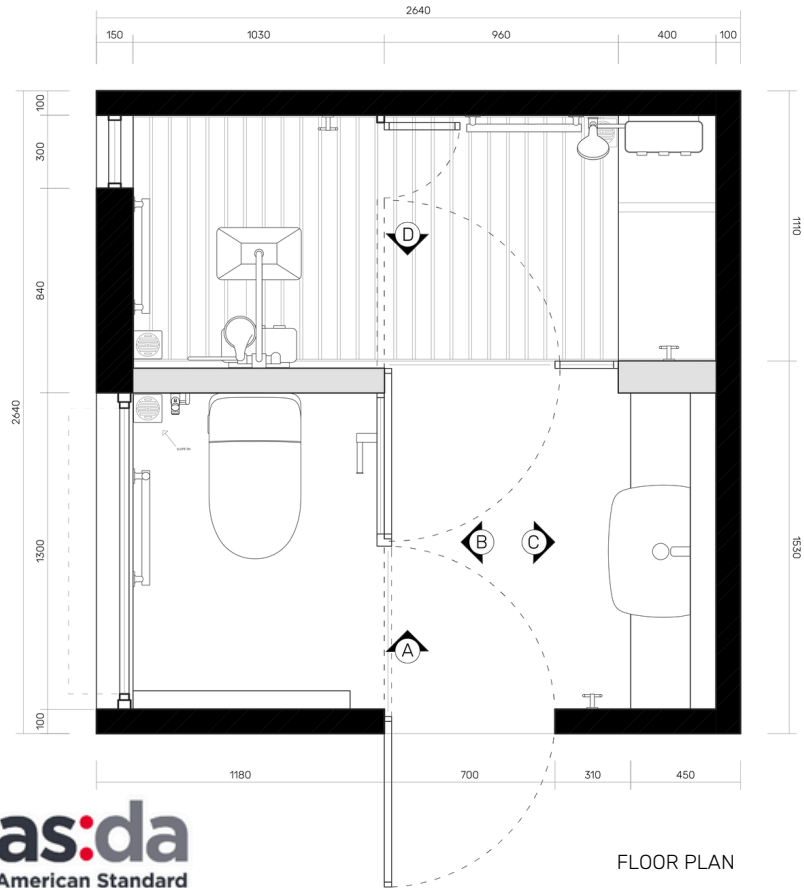
For a large family in a compact home, the bathroom often becomes a source of chaos—defined by long waits, compromised privacy, and safety hazards. **Growing Spaces** reimagines the shared bathroom not as a static box, but as a dynamic environment that evolves with its users.

Prioritizing functionality, beauty, and simplicity, this concept tackles spatial limitations through an innovative architecture of an efficient door-partition system. This flexibility allows the room to instantly shift modes, from a private, single-space sanctuary to a dual-space, and to a multi-space where family members can prepare simultaneously without intrusion.

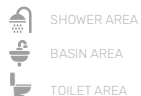
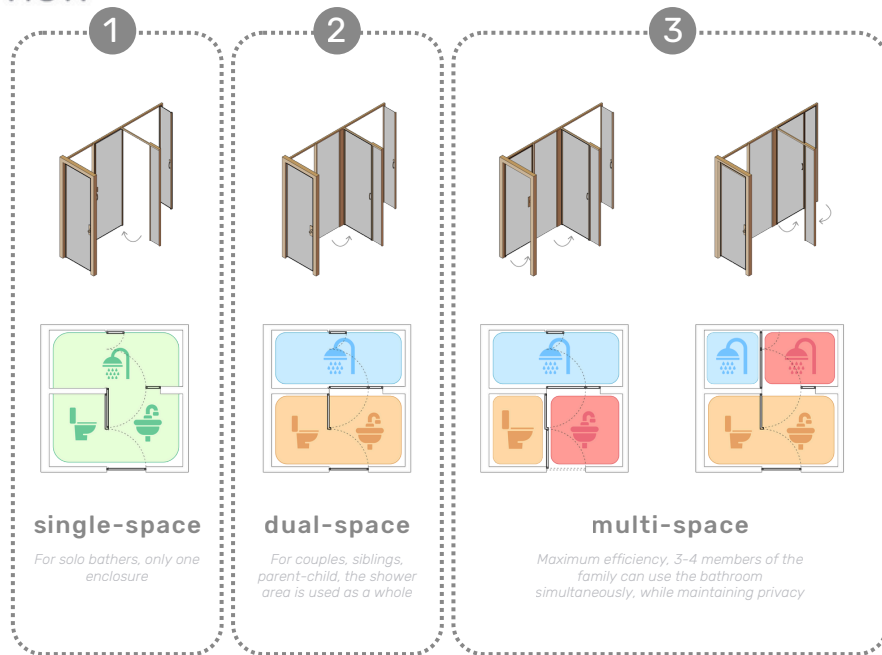
Through a soft Organic Modern lens, the bathroom transforms from a cold utility into a breathing entity. It is a design that listens to the changing needs of its users, offering a flexible embrace for every stage of life. "Growing Spaces" turns the limitation of small square footage into the liberation of a **shared, evolving journey**.

# Design: Floor Plan and Elevations

Total Bathroom Area in sqm **6.97 sqm**

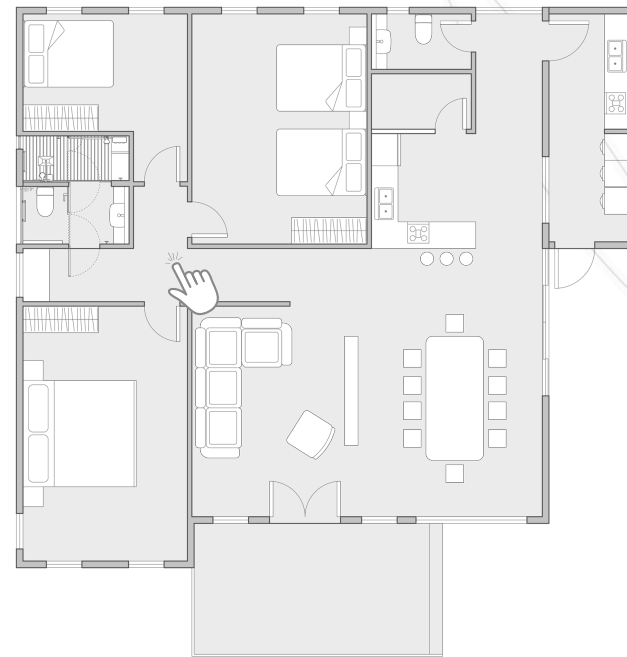


# Design Visuals: Overview



In a compact home with a multi-generational family, the morning rush often leads to a bottleneck at the single bathroom. Traditional open layouts force family members to choose between waiting for their turn or sacrificing privacy to use the space simultaneously. However, adding permanent walls only makes a small bathroom feel more crowded and cramped.

**Growing Spaces** solves this through a **adaptable door-partition system** using **double-action hinges**. With a simple adjustment, the layout transforms into **Single-space** for a spacious spa-like experience, **Dual-space** for couples, or **Multi-space** for the whole family. This flexibility allows the family to configure the space with flexibility and personalize it according to their wants and needs. This innovation ensures that as the family grows, the bathroom adapts—maximizing efficiency and individual privacy without sacrificing comfort.



The "Growing Spaces" layout offers maximum flexibility, making it easy for architects to integrate into any residential floor plan. It is ideal for ground-floor installations near elderly bedrooms to enhance accessibility. By supporting simultaneous use, this design can also serve as a shared central hub, reducing the need for a private master bathroom while efficiently accommodating a large family's daily needs.

# Design Visuals: Full Bathroom

Expansive windows serve as the room's focal point, flooding the space with daylight to minimize reliance on artificial lighting. Beyond aesthetics, these openings facilitate natural ventilation and harness UV rays for passive antibacterial cleaning—aligning the design with sustainable living principles.



# Design Visuals: Full Bathroom

The bathroom's aesthetic is rooted in **Organic Modernism**, blending a clean, minimalist structure with a deep connection to the natural world. This versatile style ensures the space fits seamlessly into any residential architecture while remaining open to personalization by the family.

To enhance the sense of scale, the white ceiling finish extends down to the upper walls. This visual "lift" creates a psychological sense of height and openness, ensuring the bathroom feels as expansive as it is serene. It is a space designed not just for comfort, but as a visual promise of it.



## Design Visuals: Shower Area

The shower zone redefines flexibility, adapting seamlessly to three uses via a double-action door partition with textured privacy glass, simple handle, and secure lock—mirroring the main entrance for intuitive operation.

In its **primary zone**, it becomes a bright, nature-inspired sanctuary. Floor-to-ceiling frosted windows flood the space with natural light for a relaxing atmosphere and passive UV sanitization. The centerpiece is the **EasySET™ Exposed Auto Temperature Rainshower System**, with dual showerheads offering family convenience and a spa-like experience.

The **secondary zone** prioritizes safety and inclusivity, featuring adaptable seating for relaxation and mobility support. A lower-mounted **EasySET™ Exposed Auto Temperature Bath & Shower Mixer** suits seated users, children, or the elderly, with a direct sightline to the main entrance for quick emergency access.

For ultimate luxury, the partition swings out fully, **merging zones** into an expansive "solo bather" environment that maximizes comfort and movement. Integrated grab bars and wood-textured ceramic groove tiles ensure reliable safety and traction across every mode without sacrificing elegance.



**as:da**  
American Standard  
Design Award 2026



Primary Zone



Secondary Zone



Merged Shower Area

## Design Visuals: Toilet Area

The toilet area is anchored by the **E-Lite Shower Toilet**, a centerpiece of minimalist design that seamlessly integrates high-tech functionality with a clean, white aesthetic. Designed for multigenerational use, its intuitive remote and automatic controls provide a touchless, accessible experience for every family member. This is complemented by the **DuoStix™ Hygiene Spray** in matching glossy white, offering an extra layer of ergonomic convenience.

Bathed in natural light from a large awning window, the space emphasizes safety without sacrificing style. Strategically placed multi-functional grab bars provide essential support while doubling as sleek towel rails. Like the shower zone, this area offers total spatial flexibility: it can be partitioned for private use via the textured glass door or opened to the rest of the bathroom to create a unified, expansive sanctuary.

**as:da**  
American Standard  
Design Award 2026



# Design Visuals: Basin Area

The basin area is all about smart space-saving. The **Signature semi-counter basin** has a soft, rounded look that fits the bathroom's aesthetic perfectly while leaving more room on the counter. I paired it with the **EasyFLO faucet**, which is a great choice for accessibility because of its easy push. Above it, the classic medicine cabinet adds extra storage without cluttering the room.

Last, is the **hidden chair**—it tucks away seamlessly but works as a vanity seat, a step stool for the kids, or even extra storage. With the soft cove lighting and pendant light, the whole area feels incredibly calm and gentle.



**as:da**  
American Standard  
Design Award 2026



Design  
Visuals:  
Optional  
Images/  
Information



# Specifications: Colors, Materials and Finishes

**WHITE MOISTURE RESISTANT GYPSUM**  
*Ceiling*

**FLUTED FROSTED GLASS**  
*Door-Partition*

**ALUMINUM WOODEN POWDER COAT, WOOD  
CERAMIC, PVC WOOD FINISH**  
*Glass Partition Framing, Cabinets, Wood-  
textured grip mats*

**MOSAIC PORCELAIN ZELLIGE TILE**  
*Walls*

**ALUMINUM WOODEN POWDER COAT**  
*Window Framing*

**ANTI-SLIP PORCELAIN LIGHT GRAY MATT  
TILES**  
*Walls, Floor*

**MOROCCAN CERAMIC TILES PATTERNED**  
*Splashboard*

**WHITE SATIN FINISH PAINT**  
*Walls*







**A78960**  
Camel






**BDBDA8**  
Ash Gray

**EBE8DB**  
Soft Linen

**775F48**  
Olive Wood

**C7AE80**  
Soft Fawn

	Product Name	Product Image	Reason for Selection
1	Signature 550mm semi-counter basin		This signature basin is a classic. The curved shape gives it a clean, modern look that's really easy to wipe down. Since it's a semi-counter style, it saves a lot of room, making the whole vanity feel much more open and spacious.
2	EasyFLO Basin Mono (Chrome)		Classic design meets total accessibility. The EasyFLO Faucet in chrome is sleek enough for any basin and features an easy-push button that makes it incredibly easy to use. It's the ultimate combination of style and efficiency.
3	Concept Round Double Hook		The contemporary design of this double hook fits the bathroom perfectly. It's highly efficient since it holds two robes or towels simultaneously, making the most of the wall space.
4	E-lite Shower Toilet		<p>The E-Lite Shower Toilet is the best choice for multigenerational living, blending a sleek, minimalist aesthetic with life-changing functionality. It elevates the everyday toilet experience; its intuitive remote-control interface brings luxury and hygiene with one click. It's packed with smart features you didn't realize you needed, but once discovered, they completely change your daily routine for the better.</p> <p>Features like auto-flush, specialized posterior and feminine cleansing provide dignity and ease of use for elderly family members or those with limited mobility. Ideal for homes, the E-Lite maintains itself through advanced UV sterilization, a self-cleaning nozzle, pre-flush technology, and integrated deodorizers, ensuring a pristine environment with minimal effort.</p>

	Product Name	Product Image	Reason for Selection
5	EasySET Exposed Bath & Shower Auto Temperature Mixer with Shower Kit		The EasySET™ Auto Temperature Mixer was selected for its versatility in the bathroom's secondary shower zone. By placing it at a lower height, the design prioritizes accessibility for seated users. The hand shower kit complements this setup with user-friendly features like multiple spray modes and an "easy click" interface, making it a perfect fit for a family-centered space.
6	EasySET Exposed Shower Auto Temperature Mixer with Integrated Rain shower Kit		The EasySET™ Exposed Auto Temperature Mixer is a standout choice for the primary shower zone. Its exposed piping strikes a balance between sophisticated rustic charm and a clean, modern aesthetic. Featuring both a rain shower and a hand shower, the system allows for a versatile experience, offering either total immersion or targeted efficiency. With ThermoComfort and ThermoSafe technologies, the mixer ensures a consistent, safe temperature, while the EasyClick hand shower provides various spray modes to suit every family member's preference.
7	DuoStix™ Hygiene Spray		What makes the DuoStix™ Hygiene Spray stand out is its multi-function design. It's gentle enough for sensitive personal use, providing a comfortable experience for both children and seniors, but it easily transforms into a high-pressure jet for cleaning. The adjustable spray direction is a thoughtful touch for accessibility, ensuring everyone can use it with ease and independence.
8	Floor drain 115 x 115mm		The American Standard Floor Drain features a sleek, minimalist design that blends seamlessly into the floor. Its linear drain pattern is not only modern but also highly practical, as it makes cleaning much easier compared to traditional designs
10	Acacia Evolution Paper Holder		The Acacia Evolution Paper Holder features a clean, simple design. Its versatile look allows it to match any bathroom style or interior finish perfectly.

# Appendix

## Design Story – Limit to 150 words per answer.

- What is the inspiration for your design?

*The inspiration for this design comes from the natural growth of a family, captured in the "Growing Spaces" theme. The idea is that a home should not be stuck in one shape; it should change and adapt as the people inside grow older. I was inspired by the need to balance a private, quiet sanctuary with the busy, high-traffic reality of a shared family bathroom. The design is based on simple, universal principles where "less is more" and the space works for everyone. The door-partition system was inspired by the idea of fluid boundaries, replacing heavy, fixed walls with light, flexible door-partitions. This ensures the bathroom can feel like a wide, open spa for one person or a structured, private space for many. Ultimately, the design is inspired by the goal of supporting a family at every stage of life, from childhood steps to elderly years.*

- How does the design fulfill the need of the target users?

*This design addresses the needs of a growing family in a compact home by balancing privacy with efficiency. The layout allows simultaneous use without feeling crowded, while prioritizing safety for children and the elderly through built-in shower seating, low-reach fixtures, and sturdy grab bars. Accessibility is enhanced by user-friendly American Standard products, like the one-push EasyFLO faucet and the adjustable DuoStix spray, which are ideal for those with limited mobility. A clean, modern aesthetic provides a neutral base, allowing the family to personalize the space over time. By combining smart spatial planning with intuitive technology, the bathroom ensures that every family member—from toddlers to grandparents—can enjoy independence, comfort, and safety.*

- How does the design fulfill the design challenge?

*The design fulfills the "Inspiring Everyday Living" challenge through the "Growing Spaces" concept. A unique door-partition system with double-action hinges allows the 6.97 sqm room to reconfigure for single, dual, or multi-user modes. This solves the struggle of shared bathrooms without using permanent, space-wasting walls. The layout integrates American Standard products, like the Signature basin and E-Lite shower toilet, to maximize the footprint. This feasible approach provides an adaptable, safe, and comfortable environment that improves daily living for elders, parents, and children, proving that limited space can foster both connection and independence.*

- How does the choice of products contribute to the purpose of the design?

*Selected products transform the bathroom into a safe, efficient sanctuary. For accessibility, EasySET and EasyFLO "push-button" controls allow intuitive use for all ages, while ThermoSafe prevents scalding. The E-Lite toilet's auto-functions reduce physical strain. Sustainability is achieved through Airnegize and EasyFLO's pre-set volumes, which minimize water waste. Maintenance is simplified by the DuoStix "Jet Spray" for cleaning and the E-Lite's self-cleaning nozzles. Together, these features ensure a hygienic, low-effort environment, fulfilling the residential challenge by providing long-term comfort and care for a busy multi-generational household.*



- **Before you submit, let's check that everything's in place**

*A friendly reminder to check that your entry follows the required template and is complete!*

- Please make sure the Participant ID is clearly indicated on Slide 1 – remember, only one participant per entry (no group work) and one submission per login account.

- Ensure your entry is an original design created by you.

- The size of the bathroom in your design should fall within the allowable range (6-7sqm).

- Please confirm that you are not a relative of any LIXIL employees or closely related persons of LIXIL employees or judges.

- Ensure that you reside within the participating countries and are attending studies full-time at a university or educational institution in the specified countries.

- *Participating countries include: ANZ (Australia and New Zealand), Indochina (Cambodia, Laos, and Myanmar), Indonesia, Philippines, Thailand, and Vietnam.*

- Lastly, only American Standard products should be used in your renderings.

-