



Inspiring Everyday Living

Design Entry Template





Design Entry Template Guidelines

You will find the following slides in this Submission Template with specific titles and requirements for your submission as indicated below. Total number of your submission should not exceed 15 slides, beginning with (Slide 1: Project Name) and ends with (Slide 15: Qualification Checklist).

SLIDE 1:
Project Name

Input a concept title that reflects your idea.

SLIDE 2:
Design Concept

Describe your concept in a nutshell,
keep it within 150 words.

SLIDE 3:
Design: Floorplan and Elevations

Organize your drawings to tell your story.

SLIDES 4-10:
Design: Visuals

Present your concept with your renderings.

- Slide 4: Overview
- Slide 5: Full Bathroom
- Slide 6: Shower Area
- Slide 7: Toilet Area
- Slide 8: Basin Area
- Slide 9 & 10: Optional Images/Information

SLIDE 11-12:
Specifications: Colors, Materials and Finishes

SLIDE 13:
American Standard Products Specified
List down the products that are used in your design.

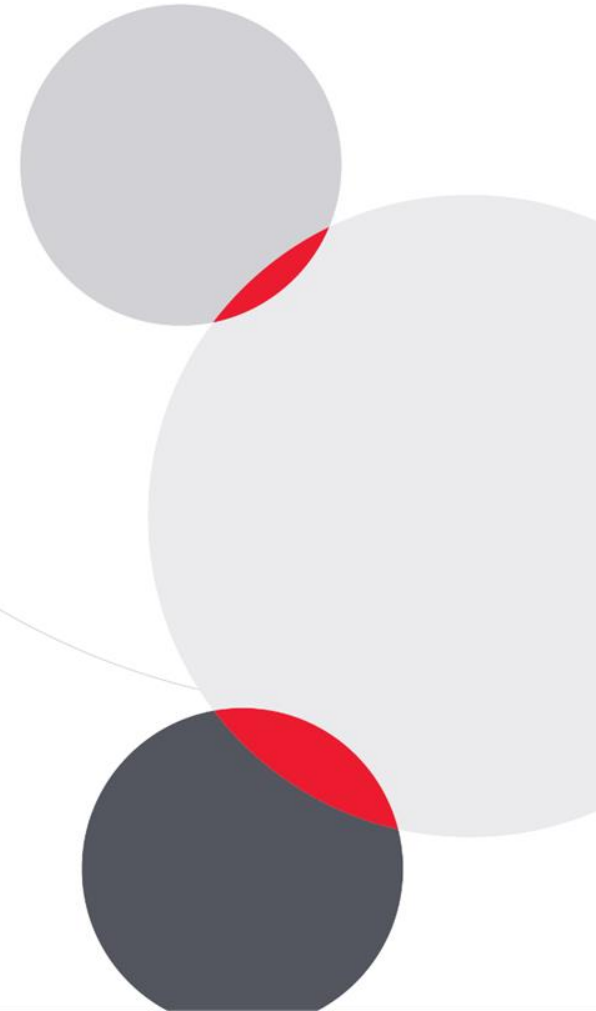
SLIDE 14:
Appendix
Elaborate your design story.

SLIDE 15:
Qualification Checklist
Before submission, review this list.



The Humble Home: Quiet Simplicity,
Inspiring Everyday Living
ASDA26-30221

American Standard



Design Concept Summary

“The Humble Home” is a residential bathroom designed to celebrate the quiet beauty of everyday living. It embraces simplicity, warmth, and honesty in materials and space, creating a calm environment where every family member, including elderly, parents, and children, can feel safe, comfortable, and cared for in their daily routines.

Rather than relying on luxury or excess, the design focuses on what truly matters: function, comfort, and human-centered usability. Every element serves a purpose, supporting independence, ease of movement, and the simple pleasures of daily life, in work, in rest, or in fun. The space inspires mindful, joyful, and connected living.



Farmers working and resting, 1955, by Fernando Amorsolo

Design: Floor Plan and Elevations

Spatial Efficiency

The floor plan is designed as a multifunctional bathroom within a compact space, carefully balancing **efficiency, comfort, and everyday use**. Shared and private functions are thoughtfully arranged to **support both independent and assisted routines**, allowing multiple family members to use the space with ease.



Private zones such as the toilet and shower are subtly separated, while shared areas like the wash and storage zones remain open and accessible, **encouraging fluid daily movement**. The layout is **adaptable to different life stages and activities**, supporting work, rest, and play through a **clear, intuitive, and human-centered spatial arrangement**.



PRIVATE SPACES



OPEN SPACES

**Total Bathroom Area
in sqm (including wall
& columns)**

7 sqm



SECTION



WALL ELEVATION



SECTION

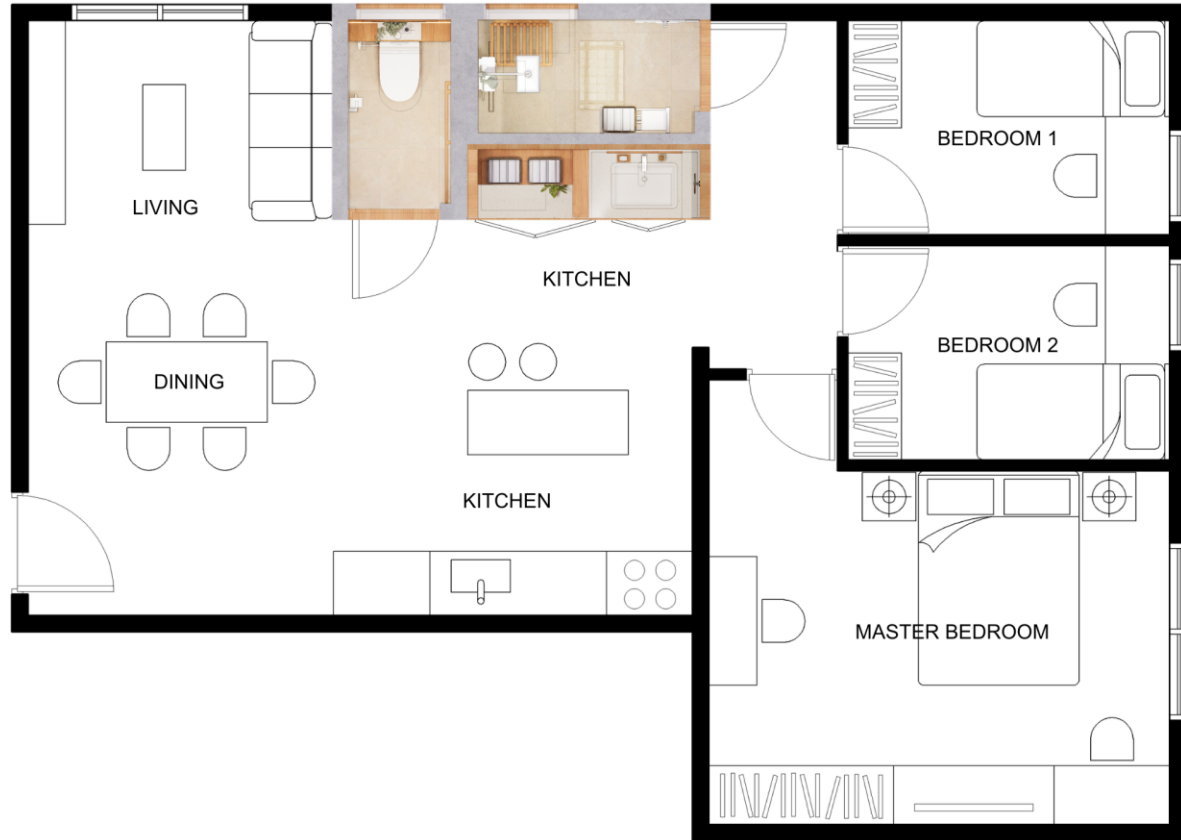


WALL ELEVATION

A Home for Everyone

This bathroom is designed for a family of four, consisting of **two parents, a child, and a grandparent**, where each member has distinct routines, tasks, and lifestyle needs. It balances **accessibility, safety, and convenience**, supporting adults' daily activities, children's independence, and elder-friendly use.

Planned within a condominium unit, the layout is easily replicable across different residential settings, making it **suitable for both compact urban homes and larger family dwellings**. Thoughtful zoning and user-centered details allow each person to carry out their routines efficiently without conflict, promoting harmony in shared spaces.



Design Visuals: Full Bathroom

Everyday Living

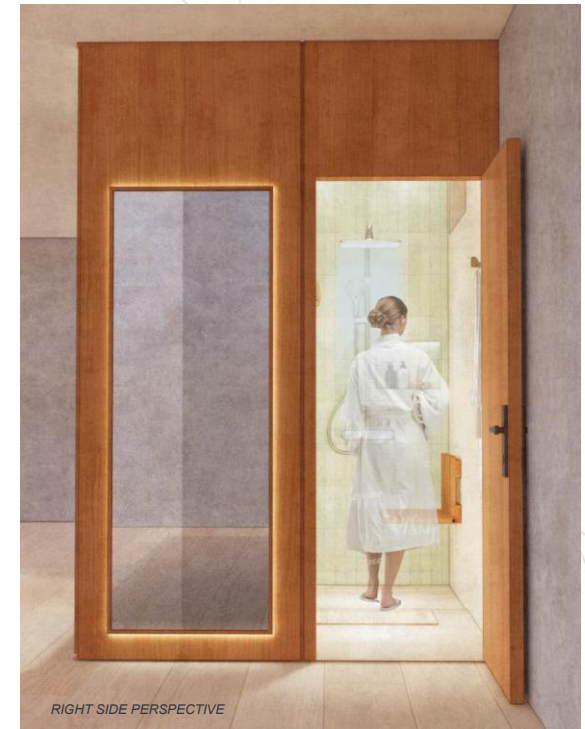
This bathroom is designed to support the daily routines of a family, providing a calm, practical, and adaptable environment for all generations.

The spaces available include a laundry and multifunctional storage area, perfect for organizing essentials and supporting everyday chores.

The wash area provides a clear, accessible space for grooming and handwashing.

The shower is thoughtfully planned for comfort, safety, and ease of use by all ages.

The toilet area offers privacy while remaining accessible and convenient for family members with different needs.



Design Visuals: Shower Area

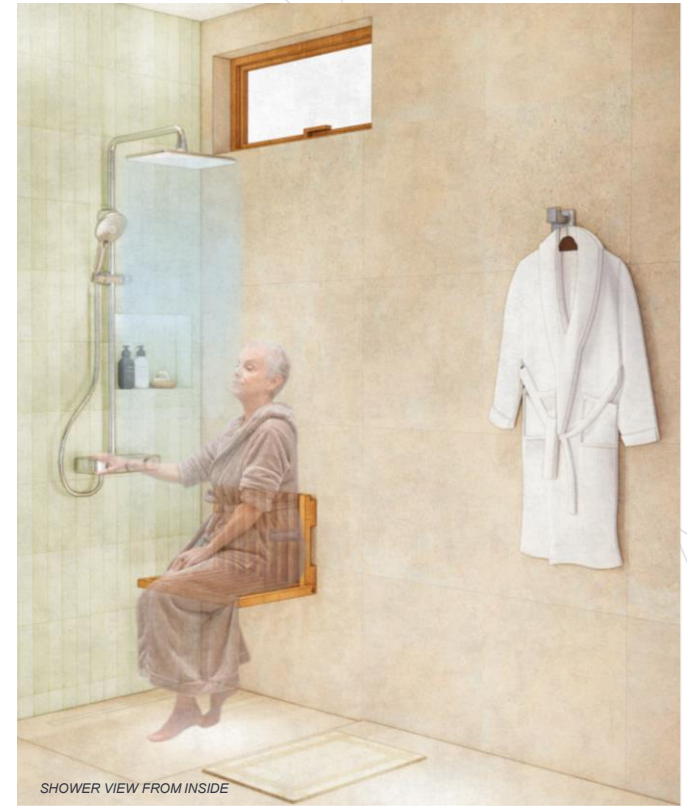
Light & Leisure

This shower room celebrates the simple joys of daily bathing with generous space, natural light, and warm, tactile textures. Thoughtful fixtures and a **foldable chair support** parents giving children a bath and help elderly users conserve energy, making everyday routines effortless and safe.

Smart storage and placement keep essentials within reach, including a niche for soap and shampoo, robe hooks, and a towel rack. A full-length mirror outside the shower allows the whole family to prepare together, fostering connection, care, and ease in daily life.



SHOWER VIEW FROM OUTSIDE



SHOWER VIEW FROM INSIDE



ELEVATION



ELEVATION



FLOOR PLAN REFERENCE

Design Visuals: Toilet Area

Private Comfort

The toilet area provides ample space for comfortable and private use, **designed to meet the needs of every family member.**

Thoughtful features include a handrail for elderly or PWD users, a bidet or hygiene spray, tissue holder, and a shelf stocked with deodorizing essentials to maintain freshness and comfort.

Every element is carefully placed for ease of use, ensuring that daily routines are safe, convenient, and stress-free, while fostering a sense of care and dignity for all users.

as:da
American Standard
Design Award 2026



TOILET VIEW FROM OUTSIDE



TOILET VIEW FROM INSIDE



ELEVATION



ELEVATION



FLOOR PLAN REFERENCE

Design Visuals: Basin Area

Ease and Function

The multifunction laundry and wash area is designed for efficiency and accessibility, with ample built-in lighting over the counters, storage, and mirrors. A spacious work counter and abundant storage make daily chores and personal care effortless for all family members.

Thoughtfully planned zones allow everyone to carry out their routines comfortably, whether doing laundry, washing up, or preparing for the day, creating a space that supports independence, organization, and ease in everyday living.

as:da
American Standard
Design Award 2026



LAUNDRY AND WASH AREA VIEW



A step stool for toddlers



A PWD-friendly countertop



An efficient space for laundry and chores

The wash and laundry area are designed for all ages & abilities.



ELEVATION



SECTION



FLOOR PLAN REFERENCE

Design
Visuals:
Optional
Images/
Information

**Flexible
Design**

Bi-fold doors enhance the home's adaptability, allowing spaces to **transform seamlessly** between active use and tidy, unobstructed circulation, inspiring daily living through thoughtful, functional design.

When the laundry area is not in use, the doors conceal storage while keeping the wash area open and accessible



When both areas are not in use, the doors close to maintain a seamless and uninterrupted hallway.



Design Visuals: Optional Images/ Information

Harmony at Home

The design addresses a common real-life challenge: bathrooms often cannot accommodate multiple users at the same time. This layout allows family members to carry out different routines **simultaneously**—bathing, laundry, using the toilet, or washing hands—supporting independence, comfort, and smooth daily living for everyone.

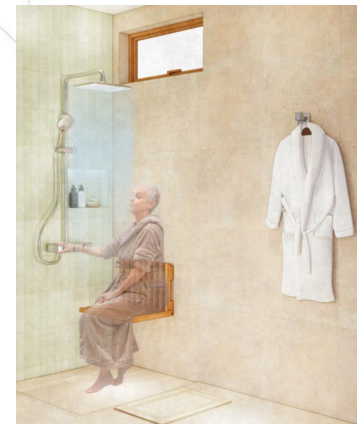
as:da
American Standard
Design Award 2026



TOILET AREA

Independent Relief
Use the toilet freely without waiting for the shower or other activities to finish.

Effortless Showers
Shower comfortably while others use the toilet or sink, keeping routines smooth and uninterrupted.



SHOWER AREA



LAUNDRY AREA



WASH AREA

Everyday Ease
Wash hands, brush teeth, or freshen up without waiting for the shower or toilet, supporting independence for all ages.

Seamless Chores
Carry out laundry and household tasks at the same time as other family members, making daily routines efficient and stress-free.



Specifications: Colors, Materials and Finishes

Honest Materiality

The materials are intentionally **simple, functional, and accessible**, focusing on comfort and everyday use rather than excess or display. With warm textures and understated finishes, the palette creates a calm and inspiring atmosphere where function and quiet beauty support daily living.



BEIGE CERAMIC TILES

Walls and Floors

Durable, low-maintenance tiles that provide a warm and neutral base, enhancing brightness while ensuring safety and ease of cleaning for everyday family use.

MARINE PLYWOOD WITH LAMINATE FINISH

Shelves, Cabinets, and Storage

Moisture-resistant and durable, offering warmth and functionality while remaining suitable for humid bathroom environments.

AMERICAN STANDARD STAINLESS STEEL

Plumbing Fixtures

Corrosion-resistant and easy to maintain, ensuring longevity, hygiene, and safety for users of all ages.

TERRAZZO-PATTERN SOLID SURFACE

Countertops

Seamless, hygienic, and durable surface that supports daily tasks while adding subtle texture and visual interest.

SAGE GREEN CERAMIC TILES

Accent Walls and Counter Backing

Soft accent tiles that introduce calm and visual warmth, reinforcing a soothing and family-friendly atmosphere without overpowering the space.

INDOOR PLANTS

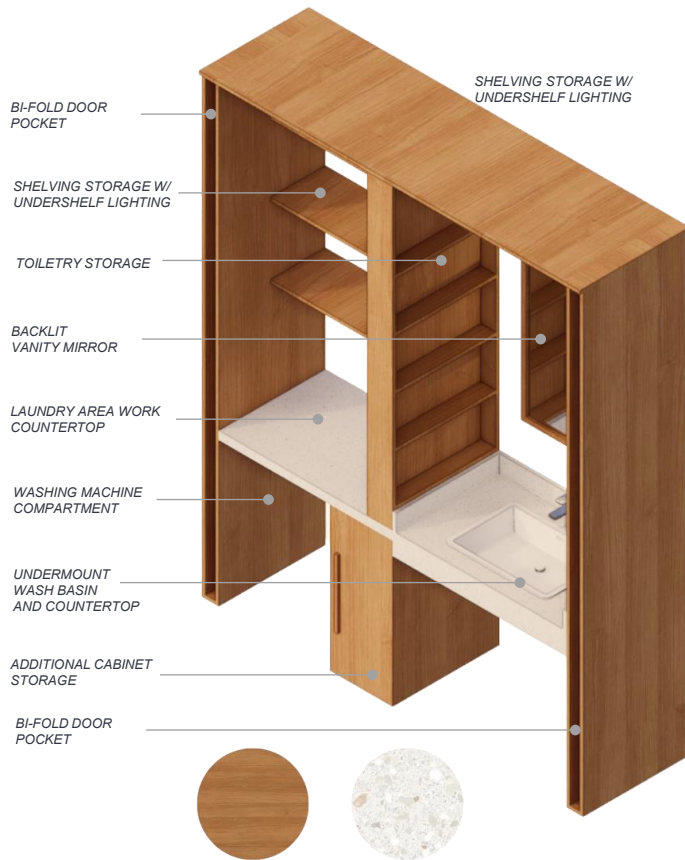
Decorative and Biophilic Elements

Introduce natural texture and freshness, promoting well-being and creating a calm, uplifting environment for everyday living.

Specifications: Colors, Materials and Finishes

Integrated Storage System

A built-in storage solution unifies the wash area, laundry zone, and general storage into one cohesive system, keeping daily essentials organized and easily accessible while maintaining a clean and uncluttered space.



Designed with Intention

Every custom element in the space is thoughtfully designed to serve a clear purpose. Rather than decorative excess, each built-in responds to real daily needs, improving comfort, accessibility, and efficiency for the entire family.

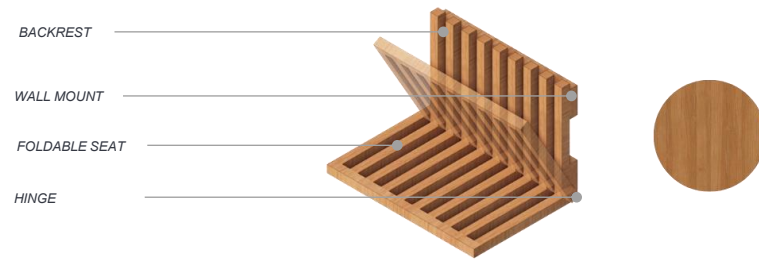
Functional Toilet Backing

The toilet backing conceals the tank to create a clean, tankless appearance while incorporating overhead shelving for everyday essentials, balancing visual simplicity with practical storage.







Foldable Support Seat





A wall-mounted folding chair provides practical support for PWD users, elderly family members, and parents assisting children. Its straightforward, functional design ensures ease of use without disrupting the space when not needed.





American Standard Products Specified

	Product Name	Product Image	Reason for Selection
1	Aero Lite Wall-hung Shower Toilet		Chosen for its clean, unobtrusive form and wall-hung design that keeps the space visually light and easy to maintain. Its integrated shower function supports hygiene, comfort, and independence for users of all ages.
2	EasySET Exposed Shower Auto Temperature Mixer with Integrated Rain shower Kit		Selected to provide consistent water temperature for safe, stress-free daily use. The intuitive controls and rain shower enhance comfort while supporting simple routines for children, adults, and elderly users.
3	Activa 600mm Undercounter Basin		Its slim profile maximizes counter space while maintaining a clean and practical washing area. The undercounter design allows for easy cleaning and supports a clutter-free, everyday routine.
4	Acacia Evolution Basin Mixer		Chosen for its ergonomic lever and straightforward operation, making it easy to use for all generations. The timeless design blends seamlessly into a calm and functional home setting.

American Standard Products Specified

	Product Name	Product Image	Reason for Selection
5	DuoSTIX™ Hygiene Spray		Included to support daily hygiene needs in a simple and intuitive way. Its compact form ensures accessibility without adding visual clutter to the space.
6	Senseflow Concealed Sensor Toilet Flush Valve (AC) with Manual Override		Designed to encourage hygiene and ease of use through touch-free operation. The manual override ensures reliability and accessibility, supporting everyday practicality across different users.
7	Acacia Evolution Robe Hook		Placed at an accessible height to support daily habits such as hanging towels or clothing. Its minimal form keeps the space organized and visually calm.
8	Acacia Evolution Paper Holder		Chosen for its simple, functional design that supports ease of use for all ages. The clean profile complements the overall understated aesthetic of the bathroom.

American Standard Products Specified

	Product Name	Product Image	Reason for Selection
9	Acacia Evolution Towel Shelf	 A modern, minimalist towel shelf with a brushed metal finish, featuring a flat top surface and a curved, integrated support arm.	Provides practical storage for towels while keeping essentials within easy reach. Its integrated form supports order and efficiency in everyday routines.
10	Acacia Evolution Towel Ring	 A modern, minimalist towel ring with a brushed metal finish, featuring a compact, oval-shaped ring and a curved, integrated support arm.	Selected for quick and easy towel access near the wash area. The compact design encourages neatness while maintaining a warm, lived-in feel.

Appendix

Design Story – Limit to 150 words per answer.

- What is the inspiration for your design?

The inspiration for this design comes from Filipino family living and my own experience of sharing a home with people of different ages, routines, and lifestyles. In many Filipino households, spaces are shared and daily life requires consideration, flexibility, and care for one another. This inspired me to design a bathroom that supports different individuals while still functioning as one cohesive space. The bathroom is treated as a core daily ritual for everyone, from starting the day to moments of rest and care. Through simple, thoughtful design, the space aims to inspire everyday living by making daily routines feel more comfortable, meaningful, and connected for families.

- How does the design fulfill the need of the target users?

The design fulfills the needs of its target users by addressing the realities of multigenerational living. It supports simultaneous use through clear zoning while allowing parents to assist children or elderly family members without compromising privacy. Storage solutions are accessible and thoughtfully placed to reduce strain and improve daily efficiency. Each area is designed to be intuitive, safe, and comfortable for children, adults, elderly users, and persons with disabilities. By prioritizing ease of movement, visibility, and adaptability, the bathroom supports independence while remaining inclusive, making everyday routines more manageable and stress-free for the entire family.

- How does the design fulfill the design challenge?

The design responds to the challenge of improving everyday living by creating a bathroom that is inclusive, adaptable, and grounded in real-life use. It accommodates different ages and abilities without relying on complex or flashy solutions. Instead, the design focuses on clarity, function, and spatial balance, allowing each user to feel supported while maintaining individuality. By blending private and shared areas, the space adapts naturally to changing needs and routines. This approach ensures the bathroom remains practical, welcoming, and relevant throughout different stages of family life. The result is a bathroom that elevates daily life through simplicity, practicality, and warmth, reflecting a humble yet inspiring approach to modern family living.

- How does the choice of products contribute to the purpose of the design?

The selected American Standard products support the design's purpose by prioritizing comfort, usability, and reliability. Each product is chosen for its intuitive operation, ergonomic design, and suitability for users of different ages and abilities. The clean forms and practical features allow the space to remain visually calm while enhancing daily routines. These products enable accessibility and hygiene without overwhelming the space, reinforcing the idea that good design does not rely on excess. Together, they help create a bathroom that is functional, inclusive, and easy to live with, supporting everyday comfort and inspiring simple, thoughtful living.



- **Before you submit, let's check that everything's in place**

A friendly reminder to check that your entry follows the required template and is complete!

- Please make sure the Participant ID is clearly indicated on Slide 1 – remember, only one participant per entry (no group work) and one submission per login account.
- Ensure your entry is an original design created by you.
- The size of the bathroom in your design should fall within the allowable range (6-7sqm).
- Please confirm that you are not a relative of any LIXIL employees or closely related persons of LIXIL employees or judges.
- Ensure that you reside within the participating countries and are attending studies full-time at a university or educational institution in the specified countries.
Participating countries include: ANZ (Australia and New Zealand), Indochina (Cambodia, Laos, and Myanmar), Indonesia, Philippines, Thailand, and Vietnam.
- Lastly, only American Standard products should be used in your renderings.



Let your ideas transform
everyday routines into
meaningful experiences!

American Standard

