



# Inspiring Everyday Living

## Design Entry Template





# HUMAN

Living in light, designed for life.

**ASDA26-21160**

*American Standard*



# Design Concept Summary

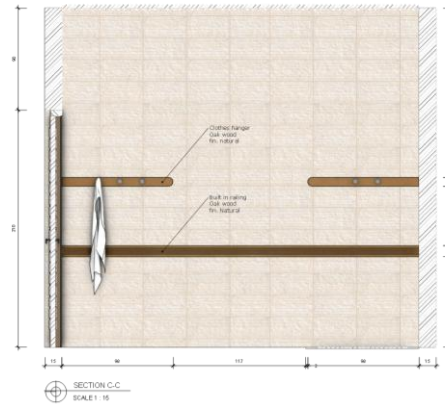
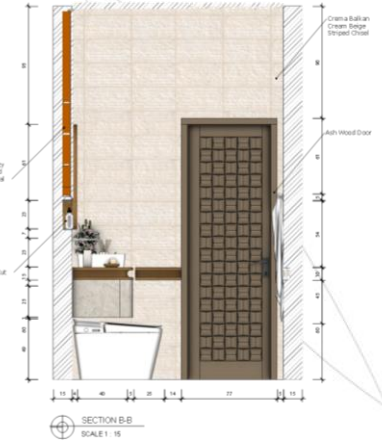
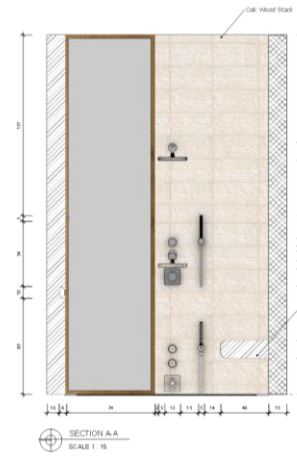
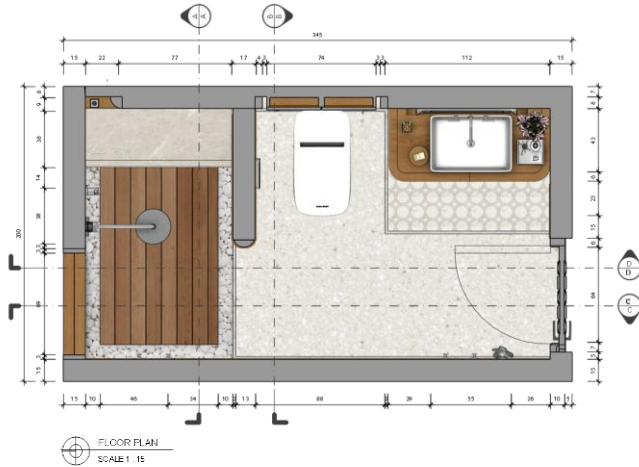
## HUMAN

HUMAN is a symbiotic living-bath concept that celebrates inclusivity through the orchestration of natural light and raw materiality. By weaving sustainable elements into a modern style, the project maximizes the compact room to provide a dignified experience for all generations. The core philosophy moves beyond mere functionality, aiming to democratize high-end design for every stage of the human lifecycle.

The atmosphere is defined by strategic light penetration, using brightness to enhance spatial perception. Authentic stone and wood textures are harmonized within a curvilinear framework, intentionally eliminating sharp transitions to foster a sense of psychological and physical security. Main innovation for this design is the integrated wooden wall-railing, a feature that transforms a traditional mobility aid into a sophisticated architectural detail. The result is a sustainable sanctuary that prioritizes the human spirit, proving that compact living can be both inclusive and profoundly luxurious.

# Design: Floor Plan and Elevations

Total : 6,9 sqm  
L x W : 3,45 m x 2 m



Total Bathroom Area  
in sqm (including wall  
& columns)

6,9 sqm

Design  
Visuals:  
Overview



Design  
Visuals:  
Full  
Bathroom



Design  
Visuals:  
Shower  
Area

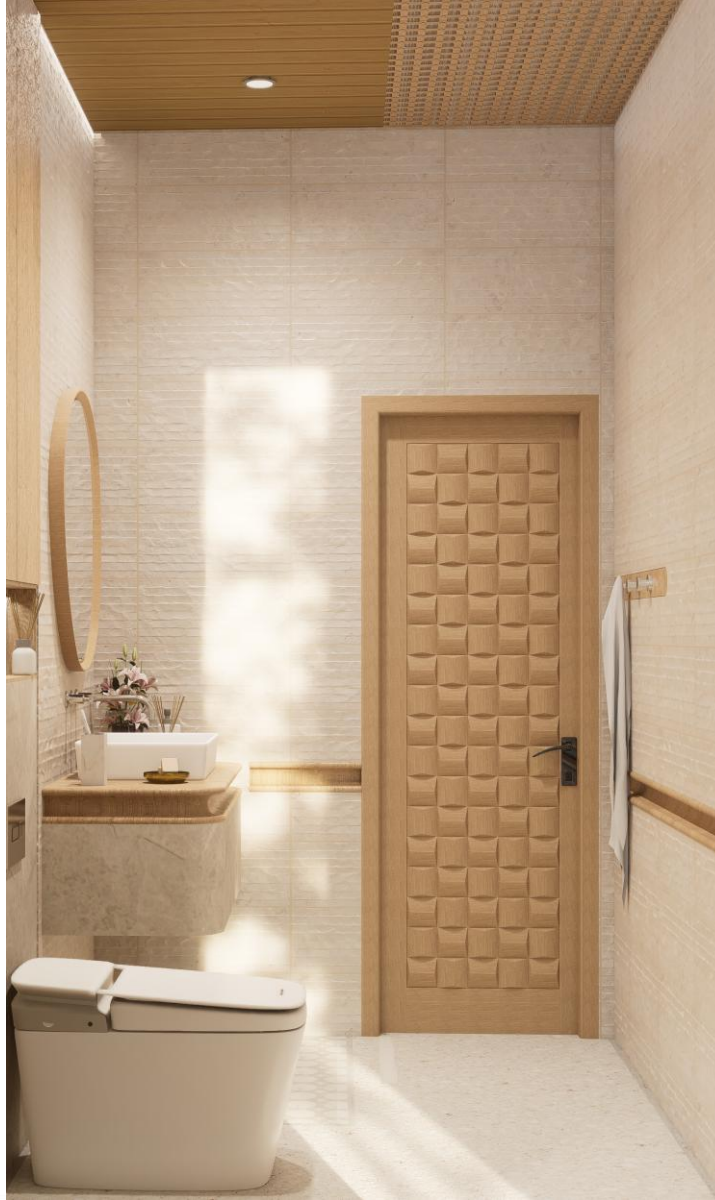


# Design Visuals: Toilet Area

Use this text box for  
description, if required.

Use the space on the right to  
show toilet area visuals.

**as:da**  
American Standard  
Design Award 2026



# Design Visuals: Basin Area

Use this text box for  
description, if required.

Use the space on the right to  
show basin area visuals.



Design  
Visuals:  
Optional  
Images/  
Information



Innovation a Mounted railing for a sleek modern functional design.

# Specifications: Colors, Materials and Finishes

Wall :



Crema Balkan Cream  
Beige Striped Chisel



Travertine Cream Cross  
Cut

Furniture & Accessories :



Oak Wood  
Fin. Natural



Oak Wood  
Fin. Natural

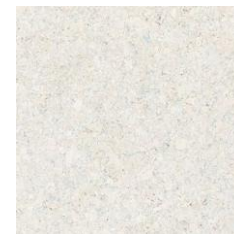


Stainless Steel

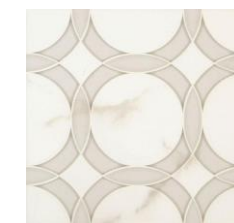
Floor :



White Pabble



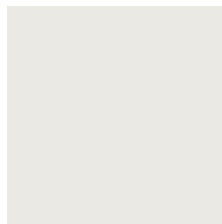
Valentino Gress Reno  
Light Grey 60 x 60 CM



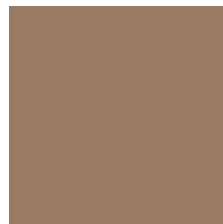
Prestige Decor Polished  
Ceramic  
Fin. High Gloss

# Specifications: Colors, Materials and Finishes

Colours :



Bone White  
Primary wall surfaces





Golden Oak  
Integrated wall-railing &  
vanity accents.



Raw Umber  
Door frames & structural  
accents.

# American Standard Products Specified

	Product Name	Product Image	Reason for Selection
1	Acacia SupaSleek Vessel 550mm		Selected for its ultra-thin edges, which perfectly align with the "no sharp corners" safety philosophy of the HUMAN concept. The product design provides a modern aesthetic while remaining easily accessible for all family members, from children to the elderly.
2	PLAT 6/6 Smart Toilet (Auto Seat and Music Function)		This product is the cornerstone of inclusive innovation. The auto-seat and remote control functions offer essential independence and dignity for elderly users with limited mobility. Additionally, the music and smart features elevate the daily bathroom ritual into a therapeutic, well-being experience for the entire family.
3			
4			

# Appendix

## Design Story – *Limit to 150 words per answer.*

- What is the inspiration for your design?

The inspiration for **HUMAN** is the belief that a home should be an atmospheric space where life thrives through equal facilitation. I envisioned a space where sustainable materials and expansive natural lighting converge to blur the boundaries between the interior and the natural world. The goal was to create an intuitive layout that serves as a dignified setting for daily life across all stages of the human lifecycle.

- How does the design fulfill the need of the target users?

The design prioritizes the safety and mobility all generation by replacing physical hazards with a curvilinear framework. The primary innovation is an integrated wooden wall-railing that provides dignified support for those with limited mobility while maintaining a clean, functional aesthetic. By eliminating sharp corners, the space proactively reduces risks for children and seniors within a compact area. Additionally, the use of strategic natural lighting and sustainable stone and wood creates a grounded, intuitive environment that supports the psychological and physical well-being of every family member.

- How does the design fulfill the design challenge?

The primary challenge was optimizing a limited space. **HUMAN** fulfills this by integrating a wooden wall-railing that provides essential support while appearing as a seamless architectural detail. Complementing this, a curvilinear framework eliminates sharp corners to proactively reduce physical hazards for children and the elderly. The design further maximizes the compact area through strategic natural lighting and seamless transitions to ensure unobstructed flow. By harmonizing these features with sustainable stone and wood, the project delivers a high-performance space that prioritizes the safety of every family member.

- How does the choice of products contribute to the purpose of the design?

The selected products enhance the design's core purpose of providing intuitive care. The Acacia SupaSleek Vessel mirrors the project's curvilinear language, offering an accessible and modern aesthetic. The PLAT Smart Toilet is vital for independence; its remote control and auto-seat functions provide essential ease of use for the elderly, while the smart features elevate the standard of hygiene and comfort for the entire family.



Let your ideas transform  
everyday routines into  
meaningful experiences!

*American Standard*

