

A **Bath Room** That **Grows**
With **The Family**
ASDA26 - 2225



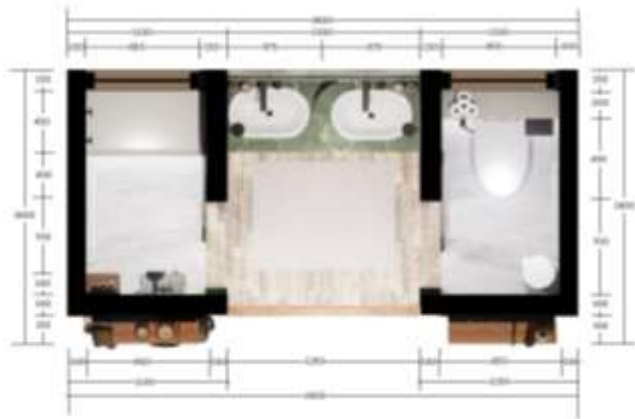
Design Concept Summary

A Bathroom That Grows With the Family is designed to support everyday life in a multi-generational household. The bathroom accommodates **elderly members, parents, and young children** within a compact **7 sqm** residential space. Rather than serving only one user, the design allows different family members to use the space comfortably as their needs change over time.

The layout is divided into three clear zones which is the **Basin Area** for daily activities such as washing and brushing teeth, the **Wet Care Area** for safe and accessible bathing, and the **Private WC Area** for privacy and comfort. This zoning supports simultaneous use while maintaining safety and ease of movement.

The design focuses on **comfort, safety, and inclusivity** without creating a clinical feel. Warm materials, soft lighting, and the careful integration of **American Standard products** enhance hygiene and ease of use. Through simple and realistic planning, the bathroom becomes a supportive space that adapts and grows with the family, reflecting the spirit of **Inspiring Everyday Living**.

Design: Floor Plan and Elevations

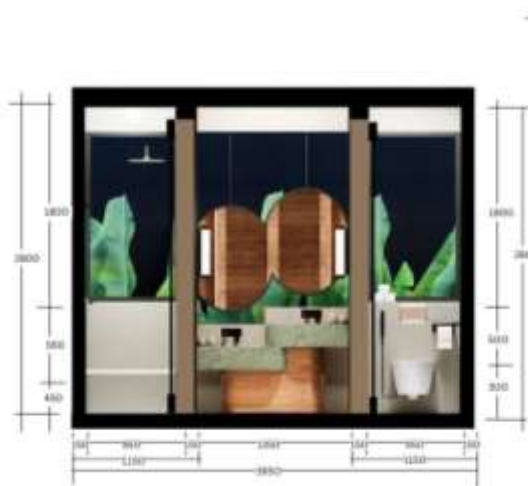


Floor Plan

Sections



Front Elevation



Total Bathroom Area
in sqm (including wall
& columns)

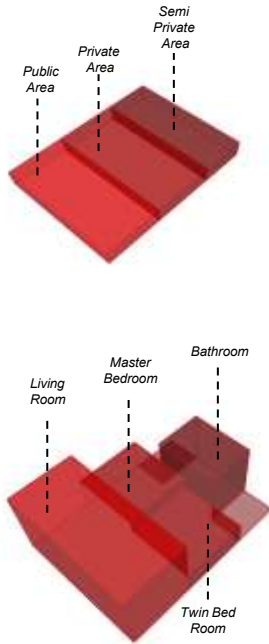
Enter here

as:da
American Standard
Design Award 2026

Design Visuals: Overview

The design is developed for a **family hotel room**, emphasizing spatial hierarchy and controlled privacy. The layout avoids overly massive partitions, allowing visual and spatial continuity between the master and children's areas while maintaining functional separation. This approach supports both efficiency and family-oriented use.

The zoning of the family hotel room is organized from private to semi-private and public areas. The private zone is placed at the front as a spatial buffer to control access and prevent unintended entry by guests into the family bathroom, which is considered a highly private area. This sequence ensures that family only spaces remain protected while still allowing a smooth transition toward more shared and public functions. The zoning strategy supports privacy, security, and comfort for family users without relying on rigid physical barriers.



Output



Design Visuals: Full Bathroom

This full bathroom is designed as a shared yet comfortable family space, balancing privacy, openness, and warmth. The basin area is positioned at the center as a semi-open zone, allowing multiple users to interact naturally during daily routines. Natural light is maximized through the upper opening, enhancing visual comfort and reducing the sense of enclosure.

Warm wood textures, green marble basins, and soft neutral surfaces create a calm and inviting atmosphere, while the symmetrical layout ensures clarity and ease of use for all age groups. Integrated shelving and wall-mounted fixtures keep the space organized and accessible, supporting a bathroom that adapts to different family needs without feeling crowded.

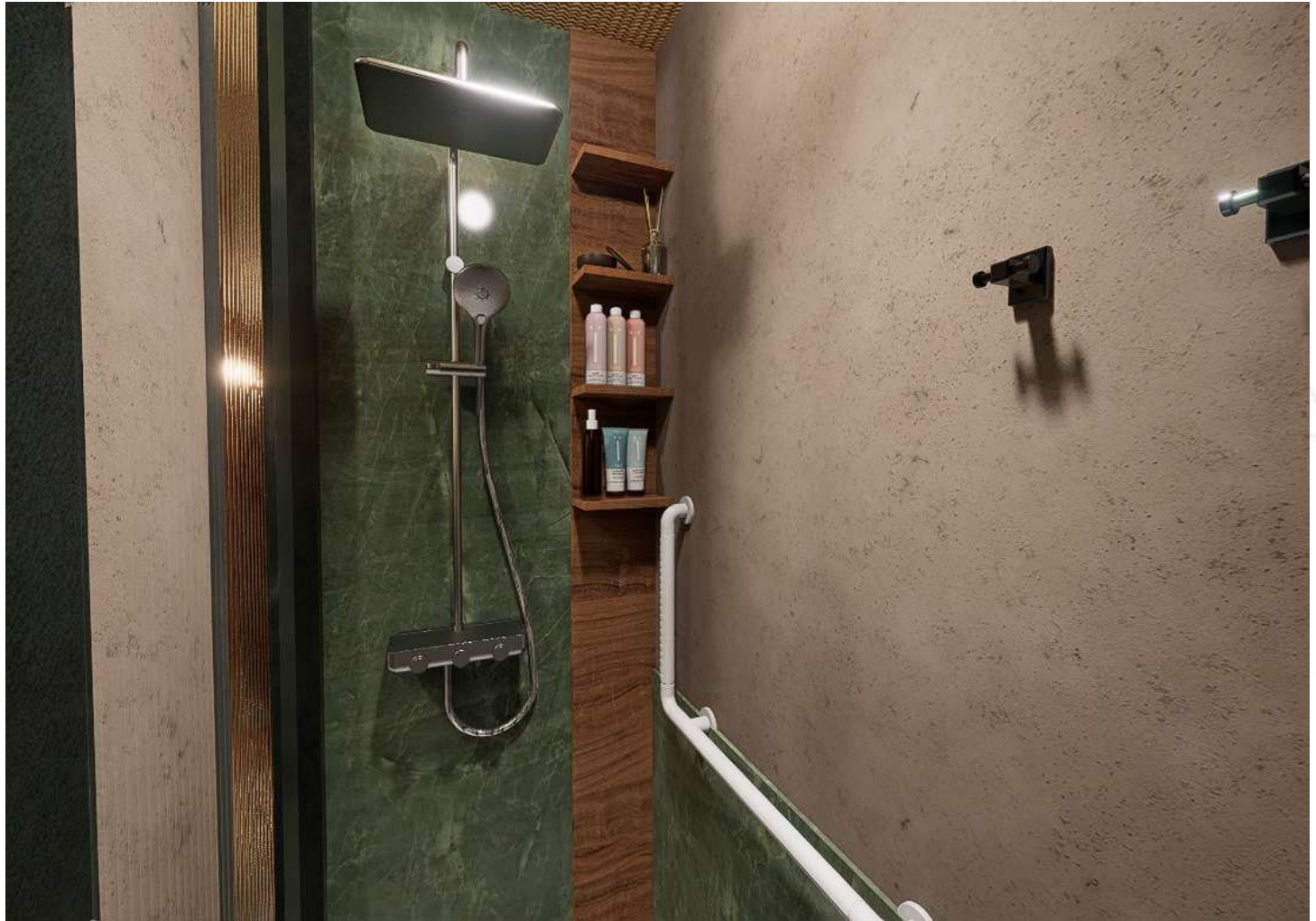
as:da
American Standard
Design Award 2026



Design Visuals: Shower Area

The shower area is designed with a strong focus on safety, comfort, and inclusivity. It features an overhead shower combined with a built-in seating niche, allowing elderly users to shower comfortably while seated. Grab bars are strategically placed to provide additional support and stability, reducing the risk of slipping.

The layout ensures easy access without disrupting circulation, while durable, slip-resistant finishes enhance safety for all age groups. This approach allows the shower space to remain functional, reassuring, and adaptable for everyday family use.



Design Visuals: Toilet Area

The toilet area is designed to ensure privacy, safety, and ease of use for all family members. A wall-hung toilet improves hygiene and makes floor cleaning easier, while grab bars provide essential support for elderly users. The hygiene shower offers a practical and comfortable cleansing option for daily use, and the toilet tissue holder is positioned within easy reach to support intuitive movement.

This setup creates a compact yet functional space that remains accessible, safe, and suitable for different age groups without compromising comfort.



Design Visuals: Basin Area

The basin area functions as the central shared zone of the bathroom, designed to support daily interaction while maintaining comfort and order. Its semi-open layout allows multiple family members to use the space simultaneously without disturbing more private activities such as showering or using the toilet.

Natural light is drawn into the basin zone to enhance visual clarity and create a calm, welcoming atmosphere for everyday routines. Integrated storage and wall-mounted fixtures keep the area organized and accessible, ensuring the basin remains practical, safe, and adaptable for family use across different ages.



Design Visuals: Optional Images/ Information

The basin area is designed with two different height levels to serve both children and adults comfortably. The lower basin allows children to wash their hands independently without the need for stools, while the standard-height basin supports ergonomic use for adults.

This separation is important because it encourages independence for children, reduces safety risks caused by climbing or slipping, and ensures daily routines remain smooth for all family members. By addressing different body heights and abilities, the design creates a bathroom that truly grows with the family and supports everyday comfort across generations.



Design Visuals: Optional Images/ Information

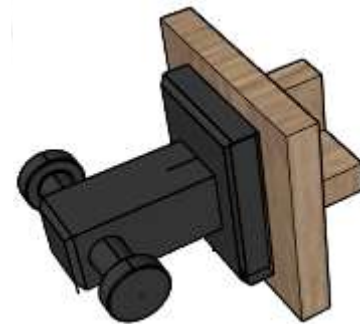
A flexible shelving system integrated into the bathroom wall to support everyday family activities. The modular wooden panels allow shelves and hooks to be rearranged based on changing needs, such as storing toiletries, towels, children's items, or personal belongings.

Placed at the entrance of bathroom area, the shelving becomes easily accessible for all users while keeping the main circulation clear. The American Standard's Concept Square Robe Hook is combined with the shelving to provide convenient hanging for bags, towels, or clothes during use.

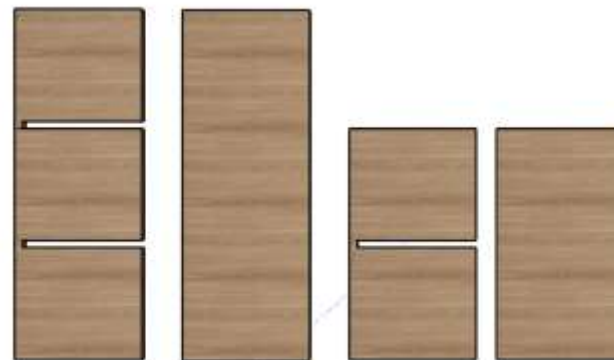
This system reflects the design concept "A Bathroom That Grows With the Family" by offering adaptability, encouraging shared use, and maintaining a warm, organized, and practical bathroom environment suitable for different age groups.



Flexible Shelving Components



Concept Square Robe
Hook_Polished Hard Graphite



Specifications: Colors, Materials and Finishes

This moodboard represents a family-oriented bathroom designed to support shared daily routines across generations. The composition blends natural textures, soft greenery, and human figures to emphasize comfort, inclusivity, and movement. The visual layering reflects how the space accommodates children, parents, and elderly users which balancing safety, warmth, and emotional connection. Overall, the mood conveys a calm, welcoming, and human-scaled environment where functionality supports family bonding rather than isolating activities.



Specifications: Colors, Materials and Finishes

Green marble defines the basin area as a calm focal point, while polished travertine brightens the space by reflecting natural light. Terrazzo supports durability in high-use areas such as seating and the wall-hung toilet backdrop. Wood-effect compact laminate panels introduce warmth without compromising moisture resistance. Anodized aluminum frames ensure long-term performance in humid conditions, and beige rug fabric enhances safety and comfort for everyday family use.



Terrazzo



Polished Travertine



Green Marble



**Wood-Effect
Compact Laminate
Panel**



Anodized Aluminum






Beige Rug Fabric

American Standard Products Specified

Use the space on the right to:

1. Indicate the list of American Standard products used with the template on the right.
1. State the reason for selecting each product and why you believe it addresses the needs of travelers in hospitality bathroom spaces.

You may use more than one slide if required.

	Product Name	Product Image	Reason for Selection
1	Studio S Countertop Basin (570mm)		Chosen to create a shared and accessible washing area for daily family routines. The countertop basin provides comfortable reach for adults while remaining usable for children with supervision, supporting shared activities in the semi-open basin zone.
2	Acacia Evolution Wall-Mount Basin Mixer		Used to ensure easy and intuitive operation for users of different ages. The wall-mounted mixer keeps the basin area visually clean and uncluttered, allowing safer movement and easier cleaning.
3	Acacia SupaSleek Wall-Hung Toilet		Selected to improve accessibility and hygiene, especially for elderly users. The wall-hung design creates a clear floor area, making the space easier to clean and visually lighter within a compact bathroom.
4	EasySET Exposed Shower Auto Temperature Mixer with Integrated Rainshower Kit		Used to provide a safe and comfortable shower experience. Automatic temperature control reduces the risk of sudden temperature changes, making it suitable for children and elderly users while maintaining daily comfort.





American Standard Products Specified

Use the space on the right to:

1. Indicate the list of American Standard products used with the template on the right.

1. State the reason for selecting each product and why you believe it addresses the needs of travelers in hospitality bathroom spaces.

You may use more than one slide if required.





	Product Name	Product Image	Reason for Selection
5	Concept Square Robe Hook_Polished Hard Graphite		Placed to support organized and practical storage for towels and clothing within easy reach. The simple form integrates seamlessly into the warm and minimal bathroom design.
6	Concept Square Single Tissue Holder_Polished Hard Graphite		Chosen for its simple and functional design, ensuring ease of access while maintaining a clean and consistent visual language across the bathroom.
7	DuoSTiX™ Hygiene Spray (Chrome/Matte Black)		Provided as an additional personal cleansing option that supports hygiene for all family members. Its design allows comfortable use without changing position, making it practical for elderly users and children.
8	1.5m PVC Twist-free Flexible Hose_Polished Hard Graphite		Used to improve flexibility and ease of movement during use. The twist-free feature reduces strain and enhances user comfort across different daily routines.

American Standard Products Specified

Use the space on the right to:

1. Indicate the list of American Standard products used with the template on the right.
1. State the reason for selecting each product and why you believe it addresses the needs of travelers in hospitality bathroom spaces.

You may use more than one slide if required.

	Product Name	Product Image	Reason for Selection
9	Wall Outlet With Holder - Round (G1/2")		Selected to keep the hygiene spray securely positioned and easily accessible, reducing clutter and supporting a tidy, user-friendly layout.
10	L Nylon grab bar(Right)		Installed to provide additional support and safety, particularly for elderly users during movement and transfer within the bathroom.
11	L Nylon grab bar(Right)		Installed to provide additional support and safety, particularly for elderly users during movement and transfer within the bathroom.
12	Floor Drain 4"		Used to ensure efficient water drainage, maintaining safety and cleanliness while supporting everyday use in a shared family bathroom.

Appendix

Design Story – *Limit to 150 words per answer.*

- What is the inspiration for your design?

The design is inspired by everyday family life, where a bathroom is not only a functional space but also part of daily interaction. In many families, routines such as washing hands or preparing for the day happen together. The concept “A Bathroom That Grows With the Family” comes from the idea that one bathroom should be able to adapt to different users over time (children, parents, and elderly members) without losing comfort or warmth. The design focuses on creating a balanced space that supports both privacy and togetherness through simple layout planning, openness, and light.

- How does the design fulfill the need of the target users?

The bathroom is planned to support multi-generational use within a compact area. Private activities such as showering and toilet use are placed in enclosed zones to ensure comfort and privacy. At the same time, the semi-open basin area allows shared daily routines, making it easier for parents to supervise children and for elderly users to move comfortably. Clear circulation and natural lighting improve safety, visibility, and ease of use for all age groups.

- How does the design fulfill the design challenge?

The design addresses limited space by maximizing the given area through efficient layout planning. Essential private functions remain fully enclosed and undisturbed, while shared activities are placed in an open and accessible zone. This approach maintains necessary privacy while still allowing moments of interaction and bonding. By balancing efficiency, comfort, and emotional connection, the bathroom supports everyday family routines and aligns with the theme “Inspiring Everyday Living.”

- How does the choice of products contribute to the purpose of the design?

The selected American Standards products support the design’s focus on comfort, safety, and practicality for everyday family use. Fixture proportions and functions are designed to be ergonomic and intuitive, making them suitable for users of different age groups. Their simple and timeless design works naturally with the warm spatial atmosphere, ensuring the bathroom remains functional, comfortable, and realistic within a family-oriented living environment.



- **Before you submit, let's check that everything's in place**

A friendly reminder to check that your entry follows the required template and is complete!

- Please make sure the Participant ID is clearly indicated on Slide 1 – remember, only one participant per entry (no group work) and one submission per login account.
- Ensure your entry is an original design created by you.
- The size of the bathroom in your design should fall within the allowable range (6-7sqm).
- Please confirm that you are not a relative of any LIXIL employees or closely related persons of LIXIL employees or judges.
- Ensure that you reside within the participating countries and are attending studies full-time at a university or educational institution in the specified countries.
Participating countries include: ANZ (Australia and New Zealand), Indochina (Cambodia, Laos, and Myanmar), Indonesia, Philippines, Thailand, and Vietnam.
- Lastly, only American Standard products should be used in your renderings.



Let your ideas transform
everyday routines into
meaningful experiences!

American Standard

