

“The OpenFlow Commons”

Treating the bathroom as a high-functioning shared space rather than just a private utility room.

ASDA26-10520



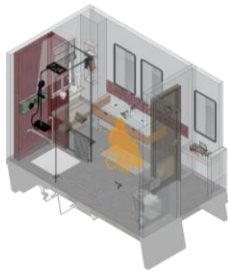
Design Concept Summary

This design is for a multi-generational bathroom that works for everyone, regardless of their age or physical ability. The main goal is to make the space feel like home while being fully accessible for someone in a wheelchair.

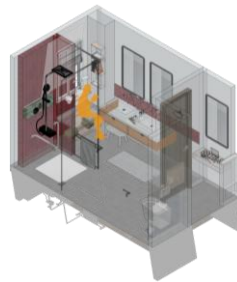
The room uses an open-plan layout with no curbs or steps on the floor. This "zero-entry" design means a person in a wheelchair can move from the sink to the shower without hitting any bumps. The shower is large and has built-in handrails, while the sinks are floating off the wall to leave plenty of legroom underneath for a seated person and additional wooden stool for the kids.



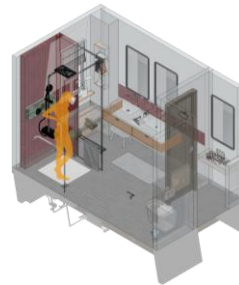
Make-Up Table



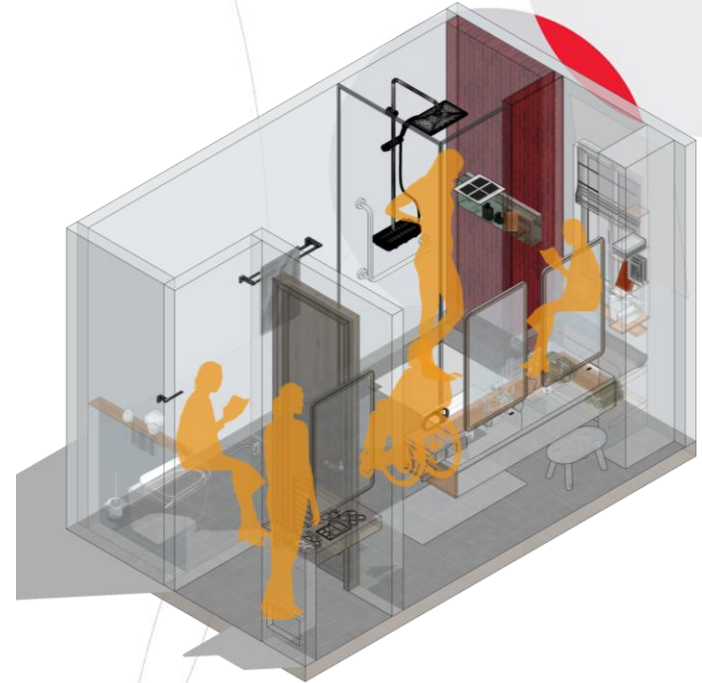
Wheelchair accessibility



Reading and Waiting



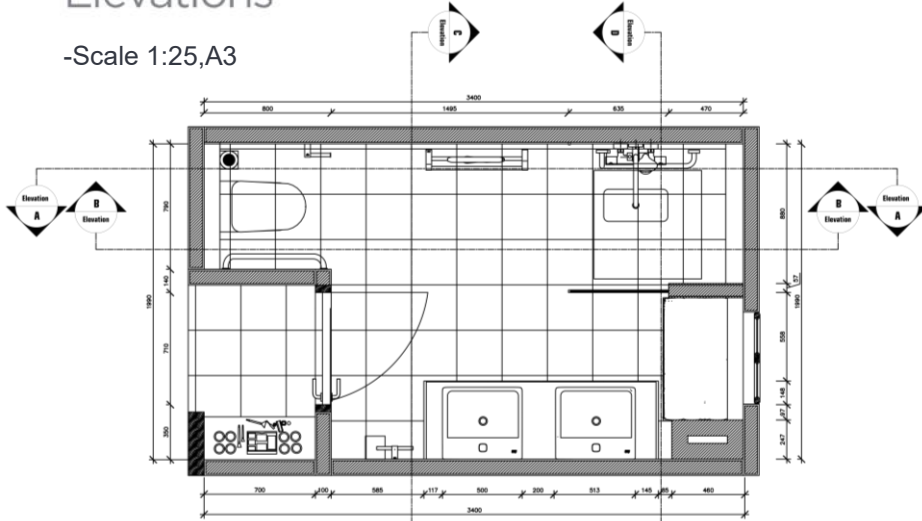
Bathing



Daily usages

Design: Floor Plan and Elevations

-Scale 1:25,A3



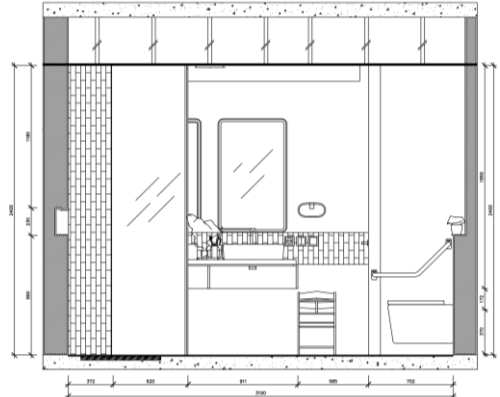
-Floor Plan



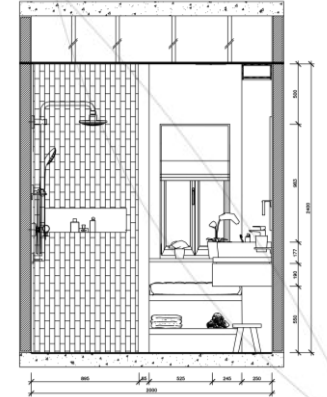
Total Bathroom Area
in sqm (including wall
& columns)

6.76sqm

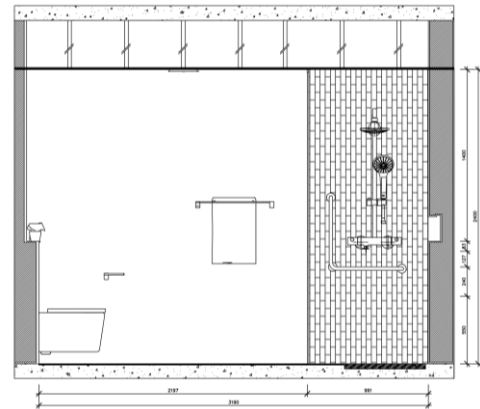
"The floor plan is thoughtfully designed to optimize the daily routines of family members. It features functional zones including a front-facing vanity, dual independent sinks, a lounge area for brief relaxation, and dedicated spaces for the shower and toilet. And there is also a small make up table in the front main door "



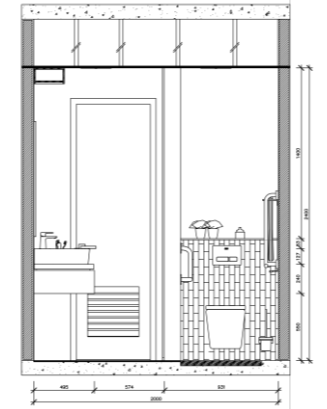
Section - A



Section - C



Section - B

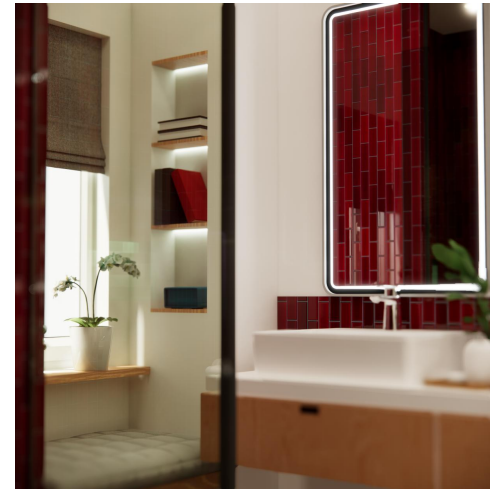


Section - D

Design Visuals: Overview

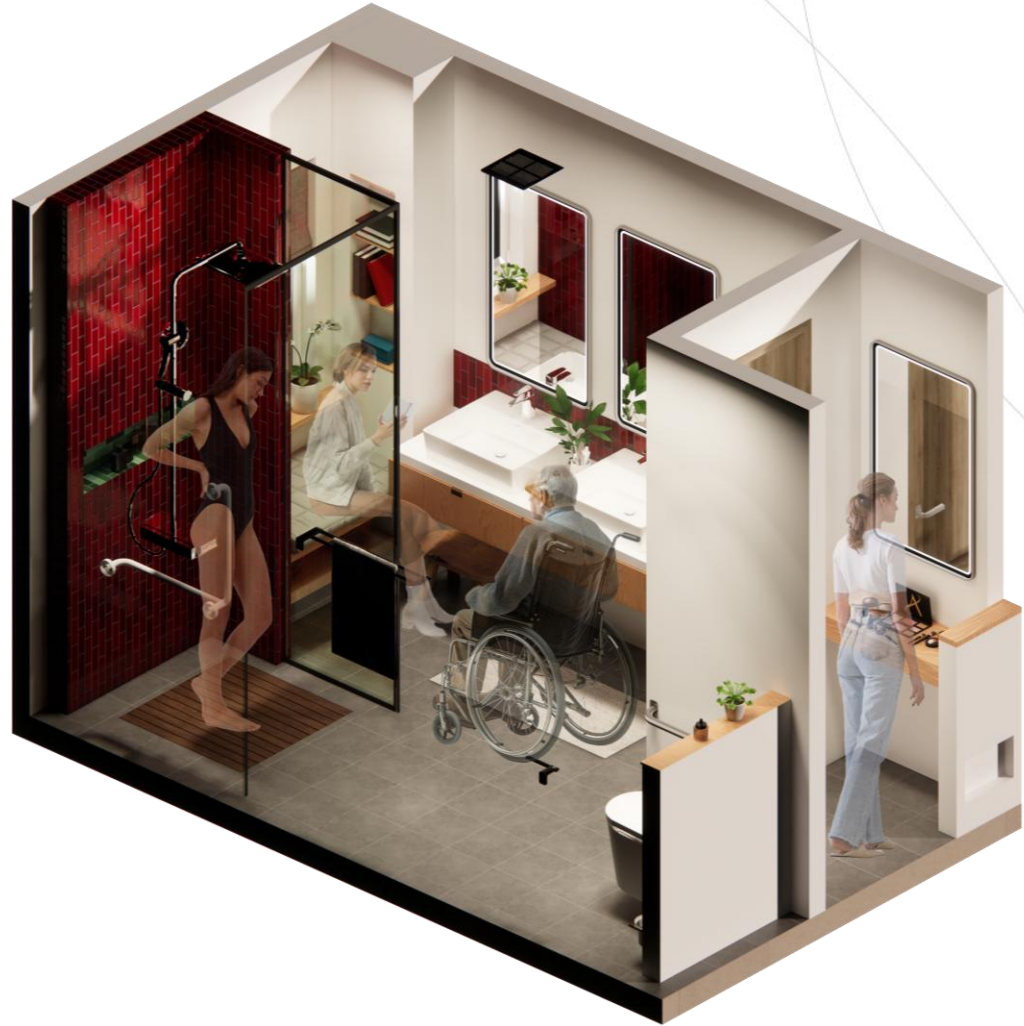
This bathroom is designed to give guests a new experience in life . The most eye-catching part of the room is the **shower** and **the built in bench**, and **a small make-up table** in front door. For the shower part , I use deep red mosaic tiles to create a bold and luxury feel. To make it even more modern, there is a glowing green shelf built into the wall for soaps and shampoos. To keep the room from feeling too dark, I also used light wood for the floating sink area and added a small wooden stool, which makes the space feel warm and natural and this wooden stool is also for the use of the kid whenever they are willing to use Sink, they can stand on it and wash their hands easily.

The layout is focused on guest comfort. There is a small bench by the window where guests can sit or put their belongings, and also a built into wall books shelves that is allow the user to read, spend their times while waiting for others members while they are using it. The large mirrors have built-in lights that make the room feel bright and open while I also added the **Barrisol Lighting** that will give a very better view of the reflection of the guest whenever they use the mirror and also with the glass shower wall and a non- slippery slatted timber shower that prevents guest from slippery. This give the whole bathroom feels very spacious and clean. It is a perfect example of how a hotel can use bold colors and natural materials to create a room that feels both exciting and relaxing.



Design Visuals: Full Bathroom

“To make a bathroom to feel organized and easy to use, I used different colors and textures, the room is split into clear areas: a **“wet zone”** for bathing and a **“dry zone”** for grooming. The deep red tiles act as a visual guide to show where the shower is, while the soft gray floors and wooden cabinets make the rest of the room feel peaceful. This layout ensures that everything is within easy reach, reducing the effort needed to move around, which is helpful for children, the elderly, or anyone with limited energy.”



Design Visuals: Shower Area

“The shower area is designed to be both safe and stylish, making it easy for everyone to use. It features a **“curbless”** entry, meaning the floor is completely flat so a person can walk or roll a wheelchair straight inside without tripping. Inside, the walls are covered in glossy red vertical tiles that add a bright, modern look, while a built-in shelf with green lighting provides a handy spot for soap and shampoo.”

White grab bars for balance and a flexible handheld showerhead alongside the main overhead rain shower. On the floor, a wooden slat mat provides a natural, non-slip surface for standing. Right next to the glass wall, there is a wooden bench with soft cushions, giving someone a comfortable place to sit, dry off, or chat with family members.



Design Visuals: Toilet Area

“The toilet area is designed for privacy and ease of use while maintaining the same modern look as the rest of the room. It features a **wall-mounted toilet (Aero-Lite Wall-Hang Toilet with Con.Cistern)** that floats off the floor, which makes the area easier to clean and provides a sleek, uncluttered appearance. Behind the toilet, the wall is decorated with the same deep red vertical tiles seen in the shower, creating a consistent theme throughout the space.

“To ensure **safety and accessibility**, a sturdy metal grab bar is installed on the side wall to help with sitting and standing. The space also includes a wooden shelf above the tiled section for plants or small items, adding a touch of warmth to the area.”

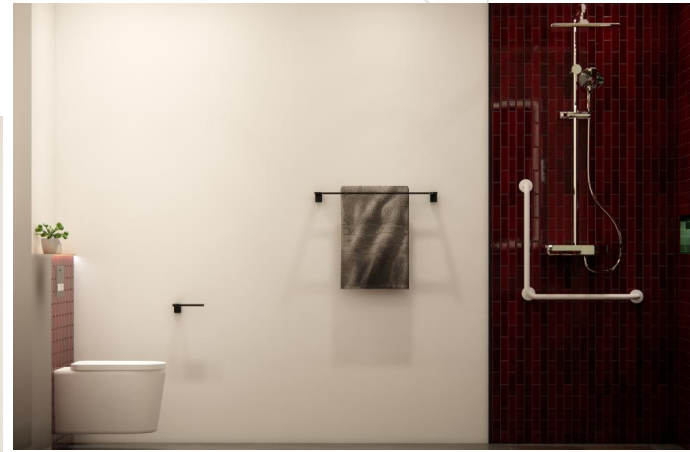


Design Visuals: Basin Area

“The basin areas I just did the designed is **to be a flexible space** where a child and an adult in a wheelchair can **get ready at the same** time. It features a long, floating wooden counter with two sinks that has no cabinets underneath, providing plenty of open room for a wheelchair to fit comfortably. To make the space even more inclusive, I added **a small wooden stool** placed on the floor so a child can reach the sinks. The area is brightly lit by large mirrors with glowing edges and a long wooden light fixture on the ceiling, ensuring everyone has a clear view for grooming. Small details, like low-mounted light switches and a cup holder on the red tiled wall, ensure that everything is within easy reach for someone sitting down.



Design
Visuals:
Optional
Images/
Information















“The bathroom layout is designed as an open, **free space** that allows a family to use the room together without feeling crowded. By removing all steps and curbs, the floor stays completely flat, which creates a large “turning circle” in the middle so a person in a wheelchair can move around easily.”

Specifications: Colors, Materials and Finishes

“The bathroom design uses a bold and warm color palette, featuring **deep Mosaic red vertical tiles** as the primary accent on the walls. These glossy tiles are paired with **soft off-white upper walls** and a neutral, **medium-gray matte floor** to keep the space feeling modern and bright. **Natural light wood, such as oak**, is used for the floating vanity, the louvered door, and the built-in window seating to add a cozy, organic texture. The finishes are carefully chosen for both style and safety, combining moisture-resistant matte wood sealants with non-slip stone-textured floor tiles. For a clean, contemporary look, the room is finished with **matte black metal hardware** on the towel racks and mirror frames, while high-gloss white **ceramic is used for the sinks and toilet.**”



| | Product Name | Product Image | Reason for Selection |
|---|---|--|--|
| 1 | E-lite Shower Toilet (Auto Open, Plug) |  | The primary reason to opt for this design is the superior ease of cleaning; because the bowl "floats" above the floor. Choosing a wall-hung shower toilet is for accessibility, and modern aesthetics. Furthermore, unlike floor-mounted toilets with fixed heights, wall-hung models offer customizable installation heights. |
| 2 | Acacia Evolution Towel Ring |  | Its primary benefit is providing a dedicated, compact spot for hand towels right next to the vanity, which prevents water from dripping across the floor and keeps countertops clutter-free. |
| 3 | Acacia Evolution Glass Holder |  | To prevent water from pooling around the base of the items, which significantly reduces the growth of bacteria and mildew. |
| 4 | Acacia Evolution Toilet Brush |  | Using toilet brush allows you to reach critical areas, such as under the rim and deep into the trap way, where bacteria can accumulate and cause persistent odors or mold growth. |
| 5 | L Nylon grab bar |  | American Standard's nylon bars feature a unique textured, non-slip surface that provides a more secure grip for wet or soapy hands, significantly reducing the risk of falls in the shower. |
| 6 | Acacia E Tissue Holder_Matt Black |  | The American Standard Acacia E Tissue Holder in Matte Black is a premier choice for homeowners looking to blend ultra-modern aesthetics with industrial-grade durability. |

| | Product Name | Product Image | Reason for Selection |
|----|--|---|---|
| 7 | Double Towel bar |  | For highly efficient choice for organized, multi-user bathrooms. it allows you to hang two hand towels in the same vertical wall footprint as one, making it perfect for shared vanities or "his and hers" setups where counter space is limited. |
| 8 | EasySET Exposed Shower Auto Temperature Mixer with Integrated Rainshower Kit (3-Way) |  | EasySET Exposed Shower Auto Temperature Mixer with Integrated Rainshower Kit (3-Way) is designed to transform your daily routine into a high-precision spa experience while prioritizing safety and convenience. |
| 9 | Acacia Evolution Basin Mixer |  | For personalized comfort, the unit features a Comfort Angle adjustable aerator, allowing you to change the direction of the water stream to ensure a splash-free experience that perfectly fits your specific basin shape. |
| 10 | Vessel with deck(1hold) |  | American Standard vessel sink with a deck (1-hole) is a smart design choice that combines the artistic impact of an above-counter basin with the structural stability of a traditional mount. |
| 11 | Tower bar |  | Towel bar is the definitive choice for maximizing drying efficiency and bathroom organization, especially for full-sized bath towels. |
| 12 | Chrome Concept Pillow button |  | Concept Pillow Flush Plate is a refined choice for a wall-hung toilet system, specifically designed to merge soft, ergonomic design with high-performance functionality. |

Appendix

Design Story – *Limit to 150 words per answer.*

- What is the inspiration for your design?

This design is for a multi-generational bathroom that works for everyone, regardless of their age or physical ability. The main goal is to make the space feel comfortable while being fully accessible for someone in a wheelchair. And I want us to treating the bathroom as a high-functioning shared space rather than just a private utility room.

- How does the design fulfill the need of the target users?

This hotel bathroom meets the needs of guests by combining a luxury feel with practical features. For travelers who want to relax, the spa-like atmosphere—created by the warm wood and deep red tiles—helps them feel calm and pampered. The design also makes getting ready very easy; the double sinks and bright. Overall, the design fulfills the user's need for a clean, stylish, and high-functioning space that makes their stay feel special.

- How does the design fulfill the design challenge?

This design solves the challenge of making a bold, dark space feel comfortable and open. Another challenge it handles is how to provide enough storage without making the room feel crowded. Instead of using big, heavy cabinets, the designer used a floating vanity and built-in wall shelves to keep the floor clear and open.

- How does the choice of products contribute to the purpose of the design?

Every product works together to make sure the bathroom is not just a place to wash, but a stylish retreat for the guest. The choice of specific products helps the design achieve its goal of feeling like a modern and luxury. For example, the floating vanity was chosen because it doesn't touch the floor, which makes the room look bigger and cleaner. The vessel sinks (the bowls sitting on top) are a premium choice that you usually see in luxury hotels, making the bathroom feel more expensive.



Let your ideas transform
everyday routines into
meaningful experiences!

American Standard

