

RESIDENTIAL PROJECT THE UPTOWN SANITY **ASDA22-30068**

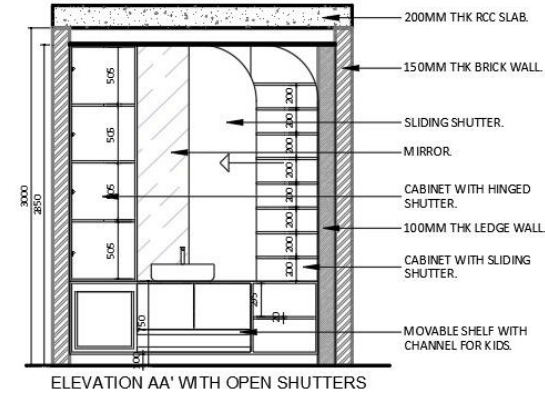
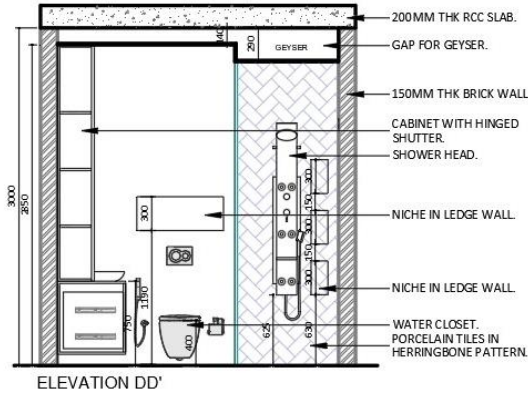
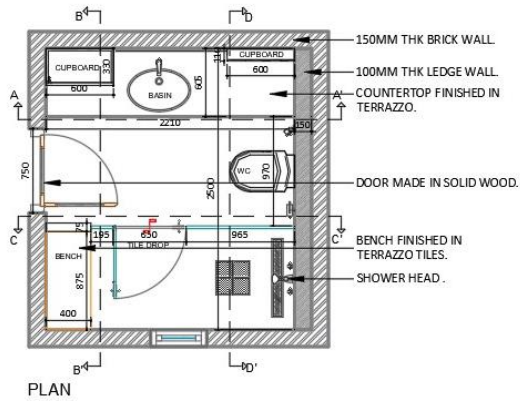
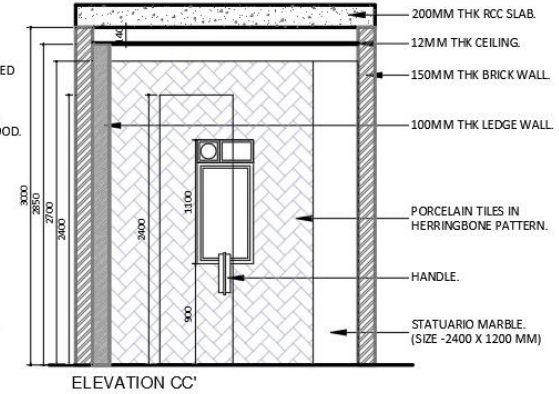
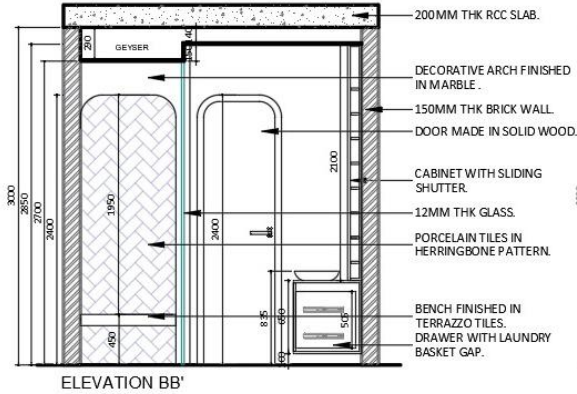
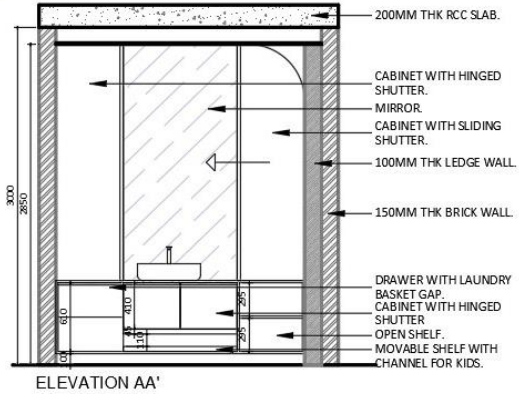




Design Concept

When a space feels too designed, it isn't homey. Thus the idea of this project was to create perfect imperfections that a family of all age groups could enjoy. The wooden texture seen on the cabinets adds to the raw warmth of the space while also maintaining modern tranquility. Different colors, textures, and prints used in minimal quantity add variety to the design all the while keeping it well tied up and composed. The white and black floor tiles add to the class of the space and yet keep it simple.

Design: Floor Plan and Elevations



Design Visuals: Full Bathroom



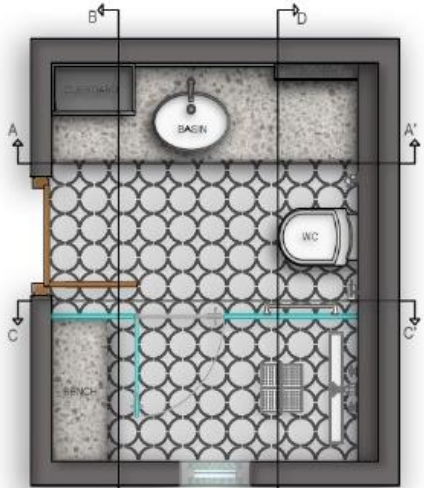
ELEVATION AA'



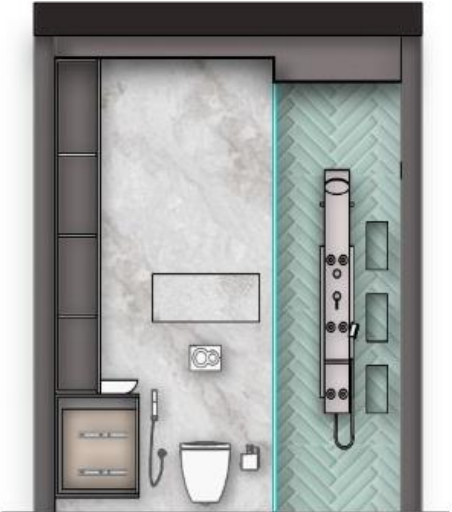
ELEVATION BB'



ELEVATION CC'



PLAN



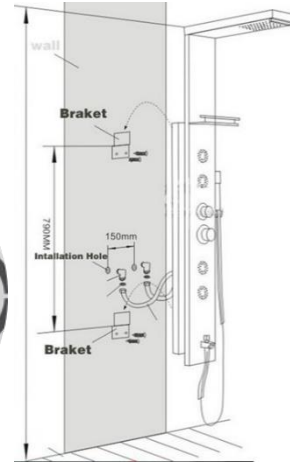
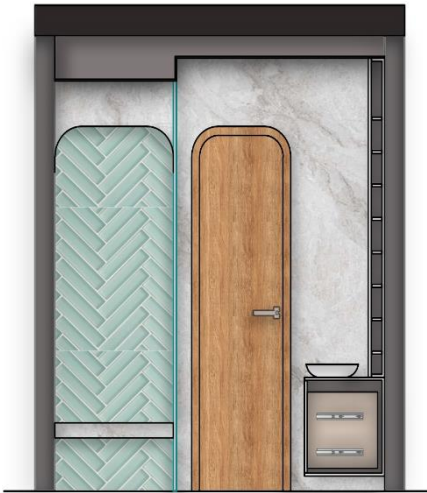
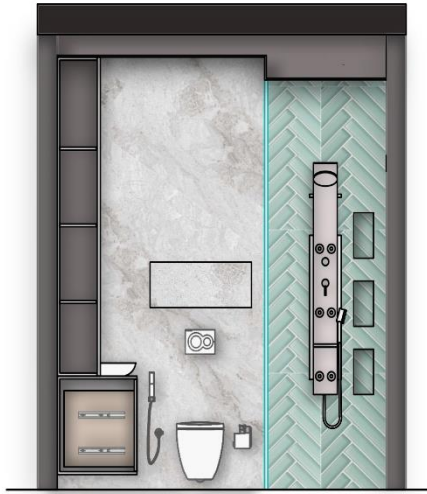
ELEVATION DD'



ELEVATION AA' WITH OPEN SHUTTERS

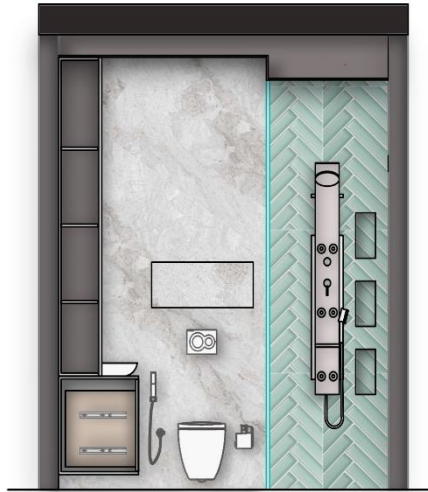
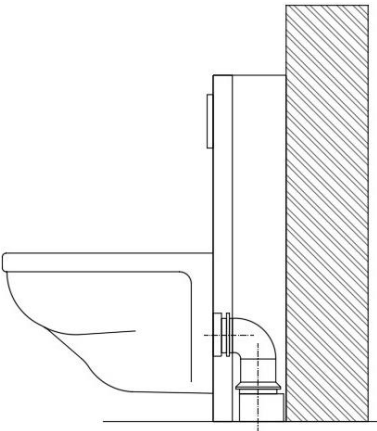
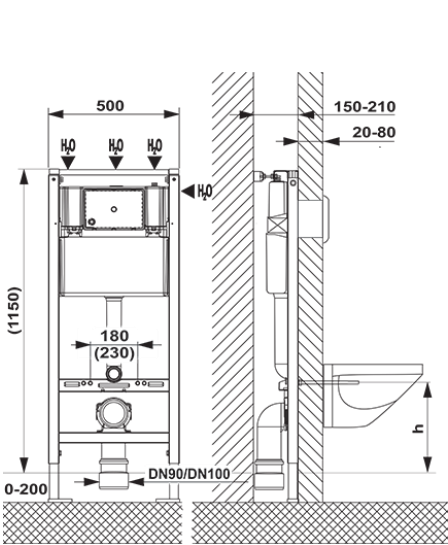
Design Visuals: Shower Area

The shower area has a very simple design which is enhanced with the porcelain teal shade tiles placed in the herringbone texture. Small niches in the ledge wall act as small pocket storage. There is also bench seating finished in terrazzo making the space easier for kids to access with or without the presence of their parents.



Design Visuals: Toilet Area

The design drama in the toilet area is created by the beautiful veins of marble from top to bottom. On the top, the marble has a beautiful curve finishing that enhances the beauty of the space by being the center of attraction. This marble ledge wall also continues to the basin counter adding a slight asymmetry to the space thus making it feel more perfectly imperfect.

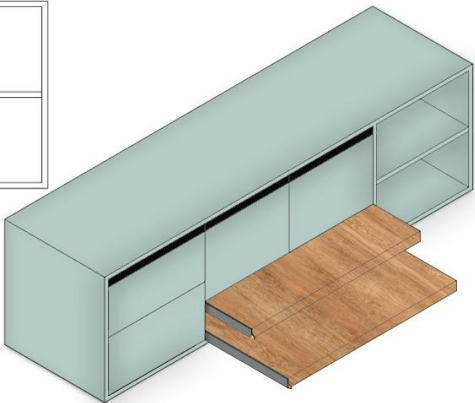
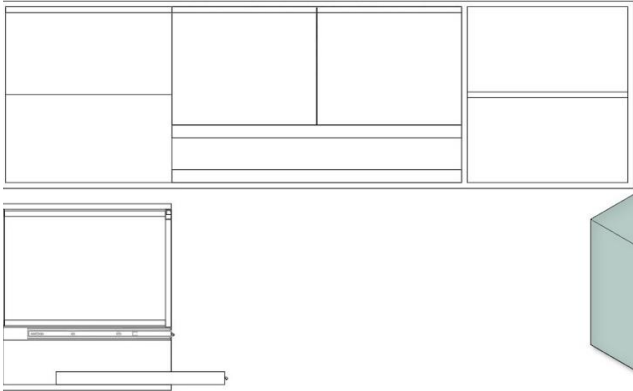


Design Visuals: Basin Area

The basin area was considered the powerhouse of utility for the entire space. The pullout planks have an easy lock system and thus become steps for kids when they want to use the basin without elderly assistance. These planks can also be used for storage whenever required and are extremely easy to clean. The drawer unit has a space for easy installation of a laundry basket so that the space is always clean and the basket is easily accessible. The shutters of two different sizes were also designed for different requirements.



ELEVATION AA'



**Design
Visuals:
Optional
Images**



**Design
Visuals:
Optional
Images**



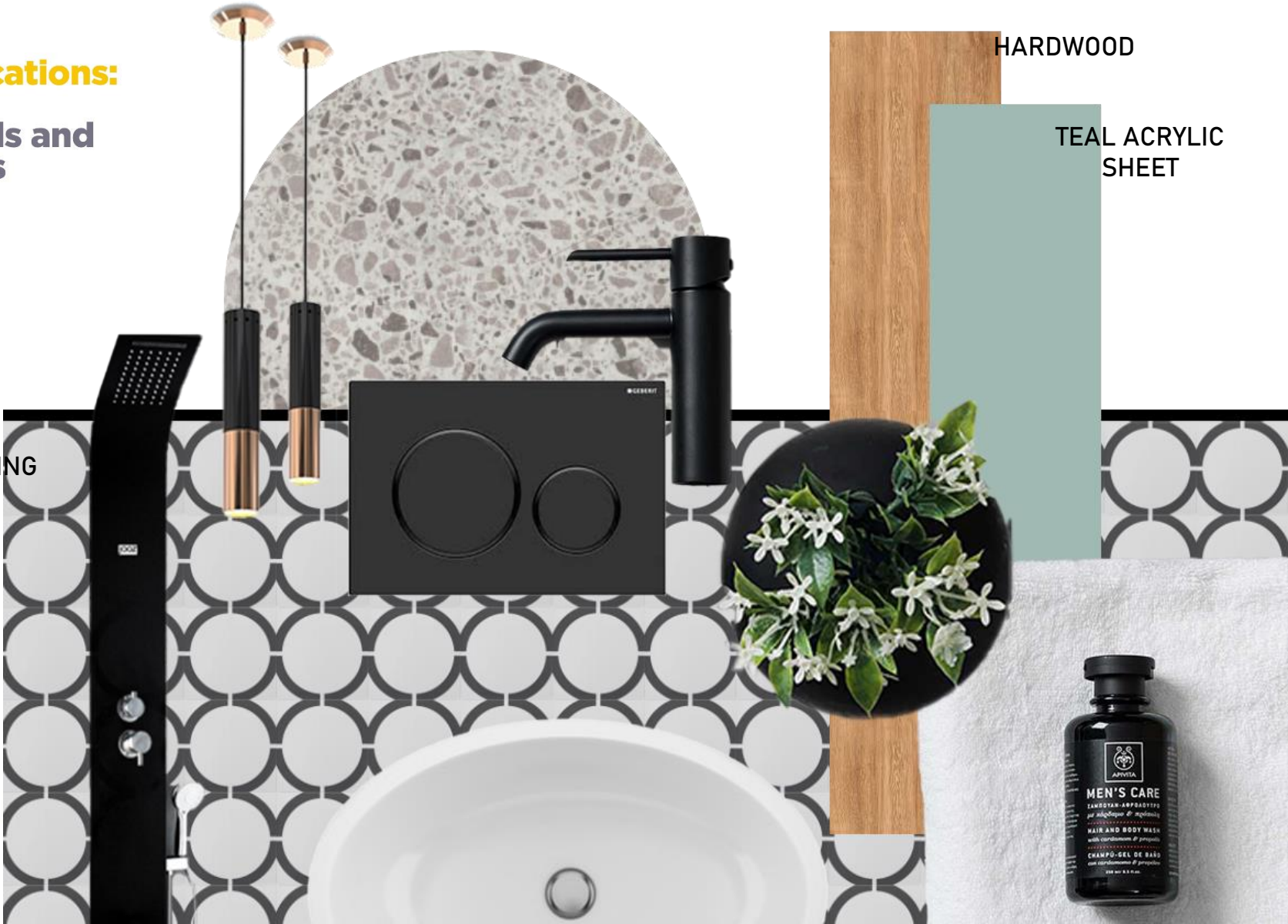
Specifications:
Colors,
Materials and
Finishes

HARDWOOD

TEAL ACRYLIC
SHEET

FLOORING

as:da
american
standard
design
award
asia
pacific
2022



Specifications:
Colors,
Materials and
Finishes

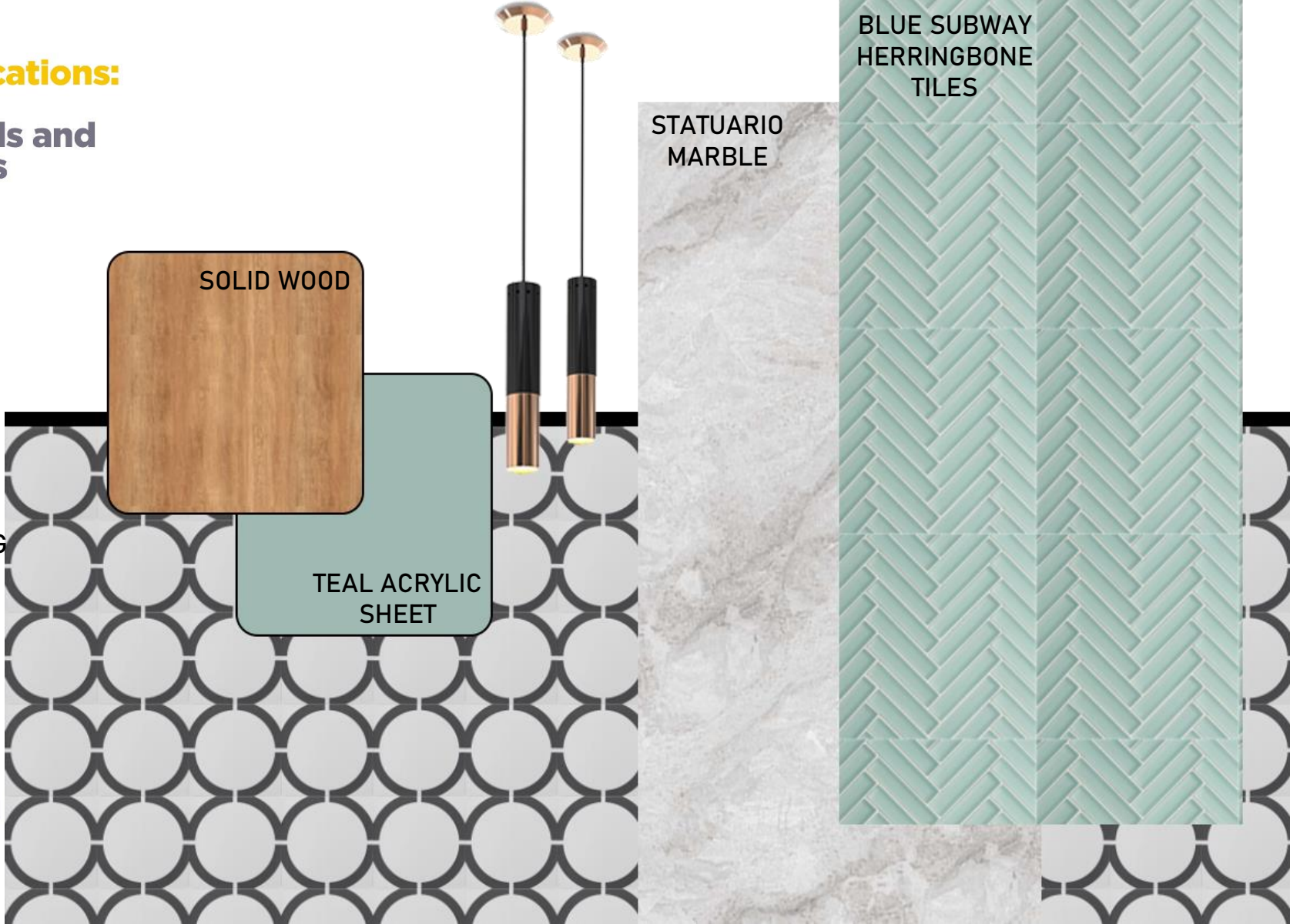
PRINTED
TILES
FLOORING

SOLID WOOD

TEAL ACRYLIC
SHEET

STATUARIO
MARBLE

BLUE SUBWAY
HERRINGBONE
TILES



American Standard Products Specified

Acacia SupaSleek
Square WH 3/4.5lpf
WH Toilet bowl + Seat
Cover
Model No.: CCAS3120-
5W20410F0;
CCASC120-U200410F0



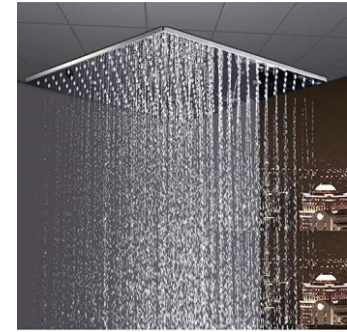
Milano Extended Basin Mixer

Accuride Self Closing
Steel Drawer Runner,
406.4mm Closed Length,



as:da
american
standard
design
award
asia
pacific
2022

TOSCH 304 Grade Rainfall
and Mist Overhead
Premium Shower Mist (12
x 12 inch)



Shinny jaquar shower
panel
CODE: JPL-SSF-ST8896



Aquieen 24" x 4"
Tile/Marble Insert
Shower Channel Water
Drainer for Bathroom
with Anti-foul Cockroach
Trap (Grade SS 304 -
Matte) (Side Hole)

