

as:da

american
standard
design
award

asia
pacific
2023

**DYNAMIC SPACE FOR URBAN
LIFE
CREAT MEMORABLE MEMORIES
TOGETHER
Participant ID : ASDA23-80439**

SLIDE 1



*American
Standard*



Design Concept Summary

Towards the design to meet the needs of many people who can use the bathroom at the same time with 3 separate bathing, washing and toilet spaces. With an area just enough to fit large apartment rooms, meeting the needs of multi-generational families.

-

Using the sliding door system to create a common space connecting members when using together. Avoid collisions when opening and closing doors between spaces.

-

Creating small details helps the process of using space bring comfort and mental relaxation, thereby building a happy family together.

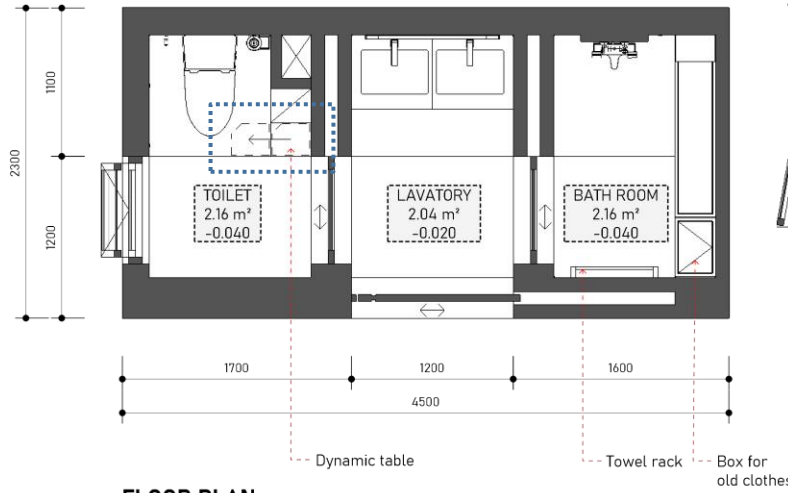
Design: Floor Plan and Elevations

The space is divided into 3 separate parts to **increase the frequency of use**.

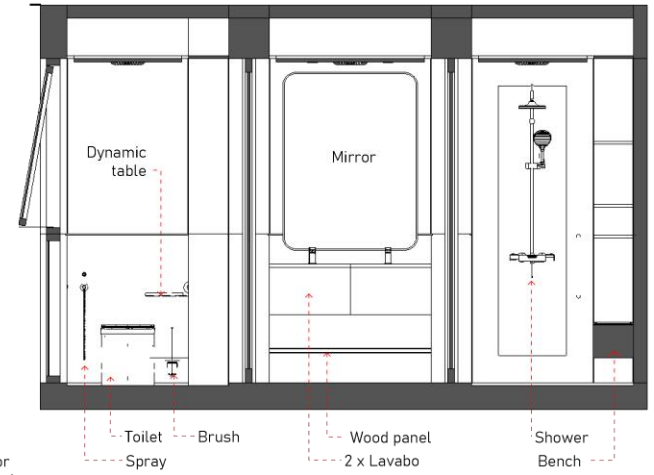
With a double sink, it will be suitable for a family of 3 generations to live together.

Use a **sliding door** system to avoid conflicts when opening doors between spaces.

Sanitary ware on the same outer wall, convenient for water supply and drainage. At the same time, avoid causing noise to the space inside.



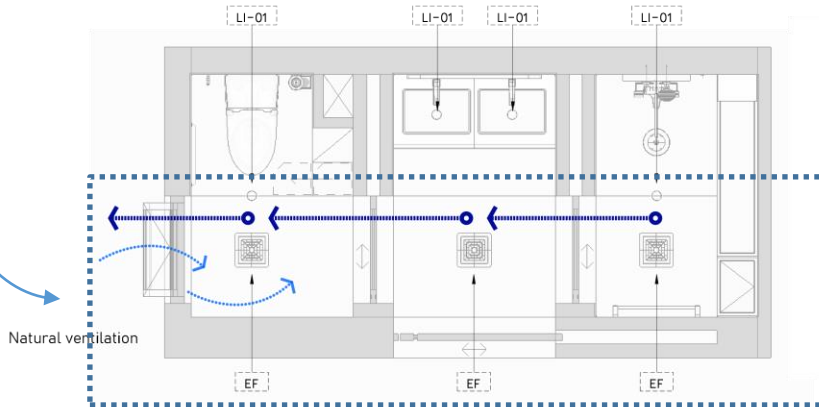
FLOOR PLAN



ELEVATIONS

When opening 2 sliding door systems, they become a **unified space**. Help family members communicate with each other during cleaning and daily activities.

Create memorable memories, laughter and joy.



CEILING PLAN

LI-01 Down light EF Exhaust ceiling fan

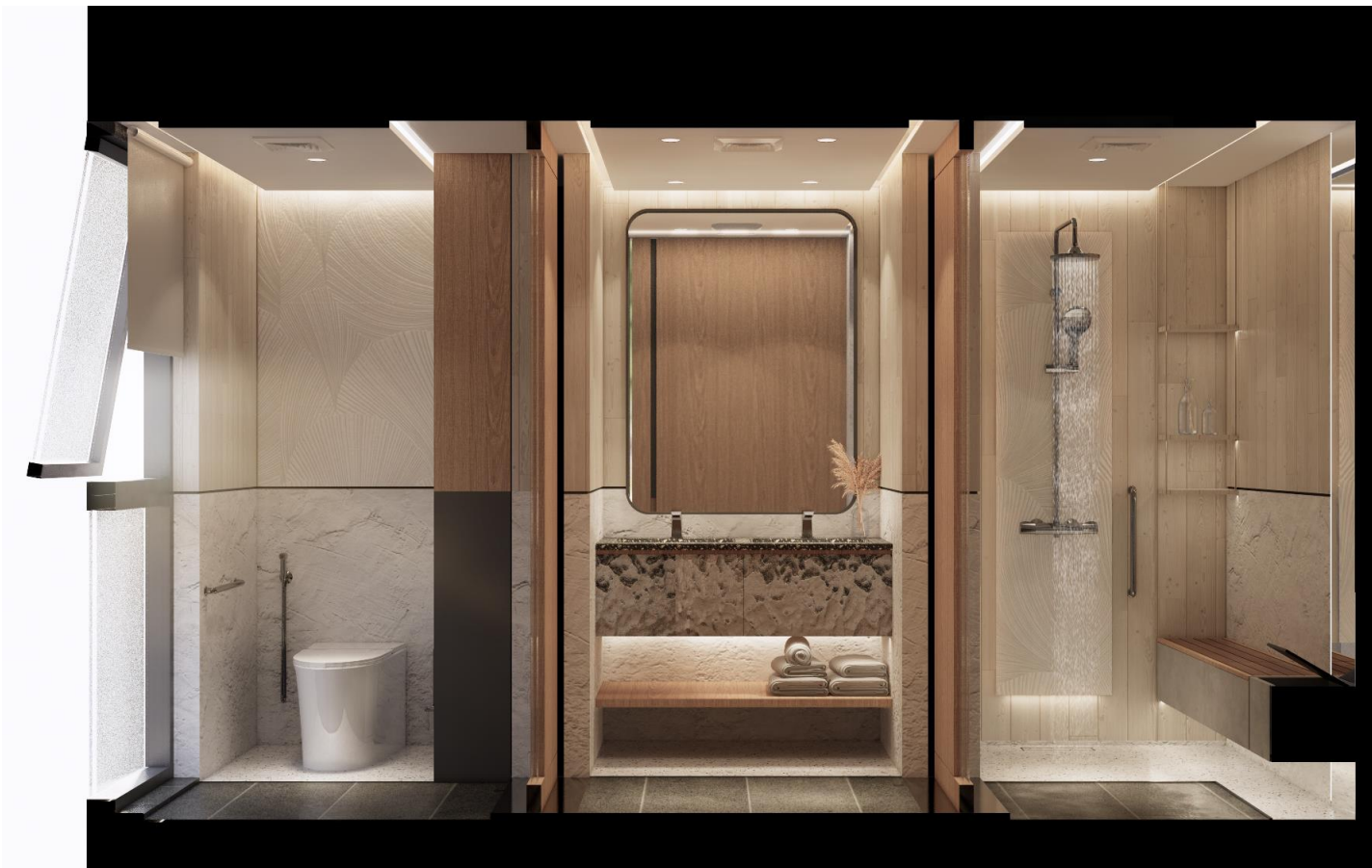


DYNAMIC TABLE

Use for phones, iPads, bluetooth speakers



**Design
Visuals:
Full
Bathroom**



Design Visuals: Shower Area

Combine white, wood and concrete paint effects to make the space diverse but still harmonious and easy to see.

-

The seat is **comfortable for children and the elderly** to use for personal hygiene.

-

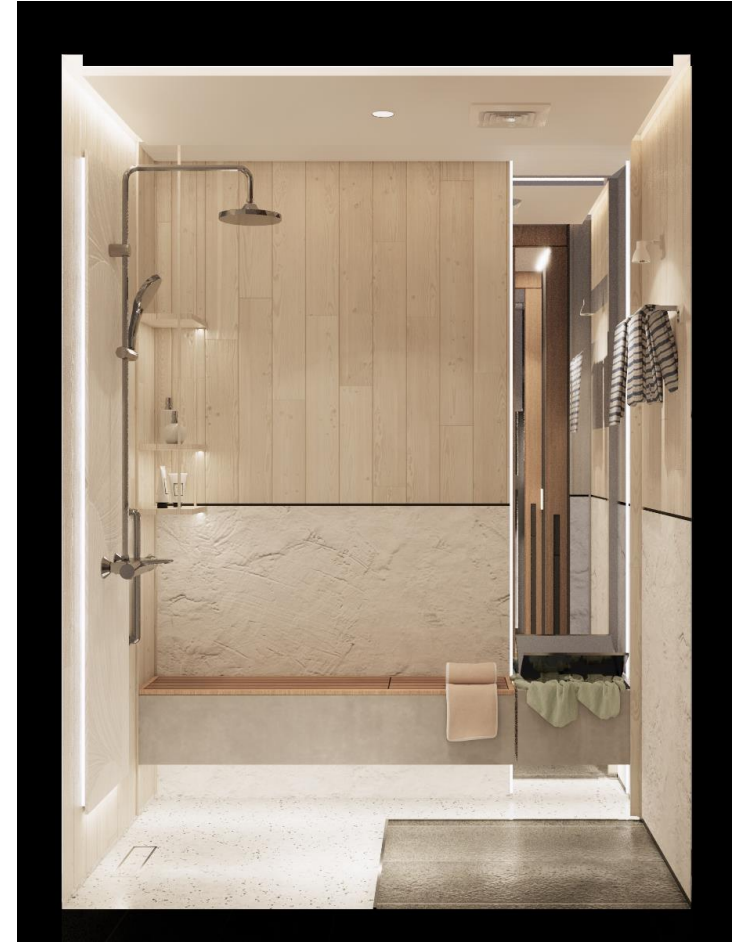
Grips help keep it **safe** and prevent slipping

-

Negative floor drainage helps to increase **aesthetics**

-

The dirty laundry box integrated into one block helps to make the space more tidy, without being sloppy with dirty clothes.



Design Visuals: Toilet Area

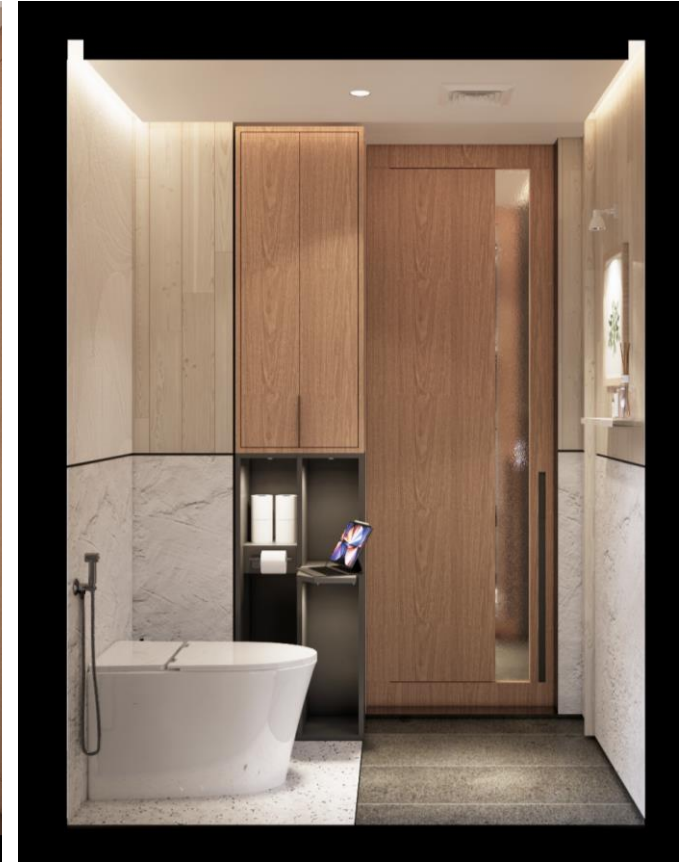
Toilets are arranged in direct contact with nature.
Communicating with nature through 2 main factors:
natural ventilation and natural lighting.

-
With a multi-purpose opening door system combined with frosted glass. Both ensure privacy and flexibility in use.
Natural odor removal is always the most effective method!

-
The feeling of the floor and the toilet space is always dry, ensuring comfort for mid-range family members.

-
Besides, with **Dynamic Table** combined in the cabinet. Is a handy structure, saving space. Users can use Phone, Ipad, ... for entertainment, or stay connected. An important factor in this day and age.

-
The **handle products** are used to ensure safety when used for children and the elderly.



Design Visuals: Basin Area

Optimal use by **double lavabo**. Suitable for **multi-generational families**

-

Lavabo with stone surface helps to drain water better, keeping the floor dry.

-

The large mirror helps to use it for many purposes and is easy to clean and **expands the space**.

-

Induction faucet saves water. Avoid children and family members forgetting when using, causing waste.



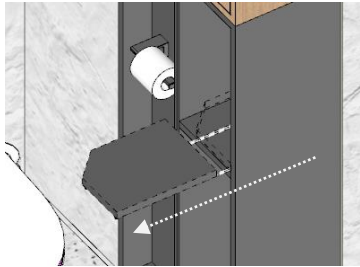
Design Visuals: Optional Images/ Information

Dynamic table

Integrated in the cabinet. Pull out when in use

- Used to list Ipad or electronic devices, books, magazines.
Improve the experience when using the toilet.

- With entertainment function to help reduce stress in life.
Delivering a **better quality of life** through a small design.



Design Visuals: Optional Images/ Information

Connect
Laughter
Celebrate

-
Just by opening 2 sliding doors
separating the bathroom from
the toilet, the whole family has
a common space to live
together.

-
Cleaning the house, preparing
together before a long trip, ...
there is always a space for us
to connect by voice, gestures,
laughter and affection for each
other.



Specifications: Colors, Materials and Finishes

Using light colors, bringing a fresh feeling of relaxation to users.

Combination of material properties:

Small - big

Smooth – rough

Stone - wood (cold - hot)

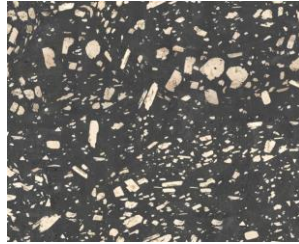
-

Combining wood and natural finishing materials creates a **cozy feeling** for children and the elderly. Space becomes physically and spiritually connected through materials

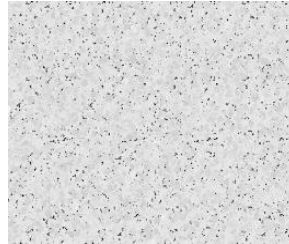
-

Terrazzo makes the space undivided into meshes. Suitable for small spaces such as apartments, making

Color palette



Andesite Porphyry Terrazzo



Mono Terrazzo



Natural wood for Door



Douglas Fir Staggered



Plaster finish material



Frosted glass

American Standard Products Specified

The multi-generational house requires sanitary equipment to ensure **safety for all ages**

-

The handle helps to ensure the safety of the elderly while using the toilet and bathroom. Make a fulcrum and avoid slipping

-

Temptacion 3-Way Rainshower System with Auto Temperature Mixer with many benefit. Such as Body of faucet stays cool and prevents scalding shocks. Twistfree, prevents shower hose from entangling.

-

The devices have a simple, easy-to-see design that is **aesthetically suitable for many generations** of users.



Heat sensor shower
FFAS4952-601500BC0



Paper holder
FFAS1387-908500BF0



Toilet accessories
FFAS1386-908500BF0



Toilet
CCAS3232-1110410T0



Tower bar
FFAS1393-908500BC0

Appendix

Design Story – *Limit to 150 words per answer.*

- What is the inspiration for your design?

Design of apartment bathroom space: With today's trend, many generations live under one roof, making the use of spaces cramped and overloaded. Making good use of bathroom space with high productivity, helping to heal when using and enhancing interaction between family members, thereby creating many good memories is the optimal goal. In order to bring a better quality of life when combining the technologies of sanitary equipment.

- How does the design fulfill the need of the target users?

Response is mainly through the following factors: Productivity, material coordination, increased experience, healing through use. The space must accommodate at least 2 to 3 users at a time. Ensure aesthetics, especially safety for children and the elderly through assistive devices. Create more space to meet everyone's essential needs.

- How does the design fulfill the design challenge?

Divide the space into 3 separate parts separated by a sliding door system, can use 3 spaces with up to 4 people at a time (integrated double lavabo). Creative Dynamic table, details help toilet users relax more, regain energy. Prioritize ventilation and natural lighting in combination with an exhaust fan system to help keep the space dry. Gives a clean, luxurious feeling.

- How does the choice of products contribute to the purpose of the design?

Products that improve the user experience. Induction faucets help save water, handle products help keep the elderly and children safe. Direct and recognizable contributions