

as:da

american
standard
design
award

asia
pacific
2023

Weathering Walls

ASDA23-51278

SLIDE 1



*American
Standard*



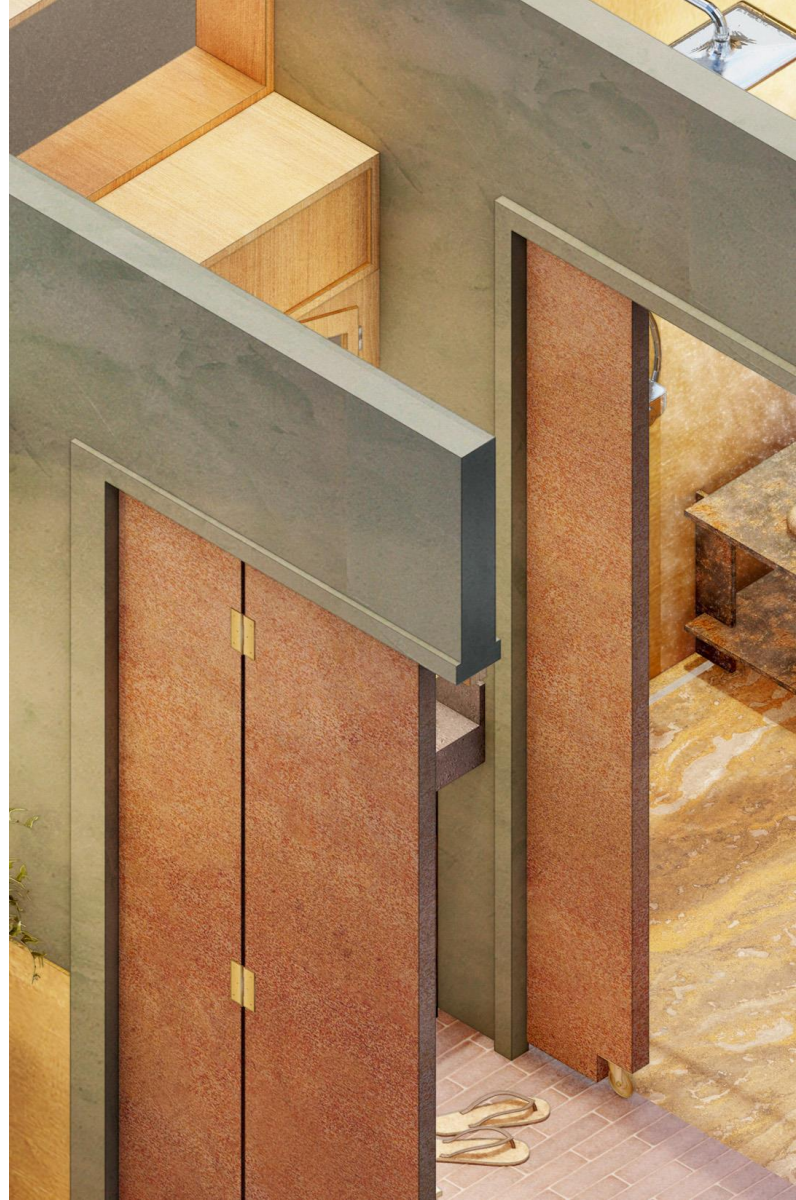
Design Concept Summary

Weathering Walls

To “go to the bathroom” is to enter a place of either ritual and release or of dirt and displeasure. It is a place of introspection, intimacy, inferiority, or insecurity. To “go to the bathroom” is one of our most fundamental activities—constantly sought and visited, a space used by all human ages.

As household configurations evolve and reorganize, the material construct of the bathroom asks to be revisited. Does it nurture and assist, or limit and impede?

Weathering Walls sets foot on these tiled floors by exploring the tensions and temporalities of familial realities. It examines the concept of aging as a necessary condition of the design process rather than a threat opposed to it—authoring a space where change is embraced rather than resisted.

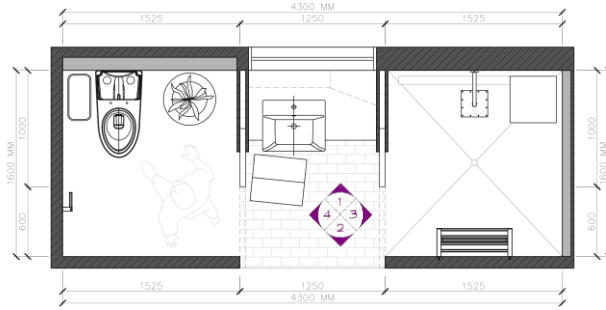


Design: Floor Plan and Elevations

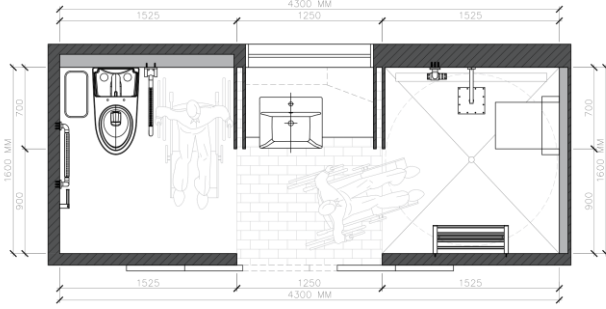
Grows With You.

Multigenerational households are commonly found in many developing countries, particularly in Asia where families are characterized as closely knit. Within the last decade, the number of multigenerational households in the Philippines has nearly doubled (Berja, 2007). Such rise in popularity of this household configuration may be attributed to its ability to help families overcome socio-demographic and economic pressures together. However, its existing framework has created challenges in relationships, privacy, and space.

Designed to grow with you, this project introduces a dual purpose layout that responds to the needs of both the present and the future. Through this adaptable approach, congregation and independence converge in a singular space—making creation synonymous with change.



Floor Plan today (6.8sqm)



Floor Plan in 10-15 years (6.8sqm)



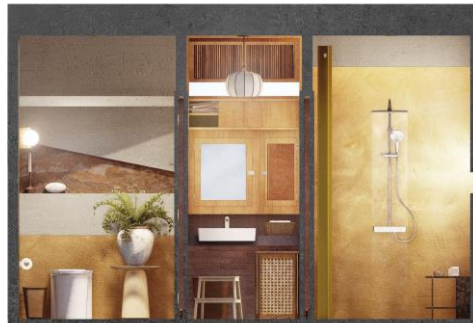
Perspective today



Perspective in 10-15 years



Movable doors allow for different degrees of separation while providing options to create larger clearances when needed.



Elevation 1



Elevation 2



Elevation 3



Elevation 4

Design Visuals: Full Bathroom

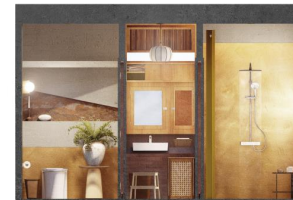
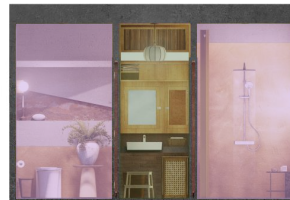
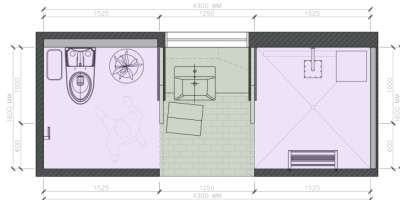
Simultaneous Strategy.

Based on the premise of designing for multigenerational living, this project imagines a space grounded on spatial boundaries. By being simultaneous in function and style, it confronts persistent issues of differences in rituals, preferences, and needs.

In function, the design identifies shared and private zones for waiting time to be condensed and separation to be instinctively recognized. In style, where the older generation is more inclined to sentimentality and the younger generation to modernity, character is built through the merging of traditional and modern elements.



Full Bathroom Perspective today



- Shared Zone
- Private Zones

Design Visuals: Full Bathroom

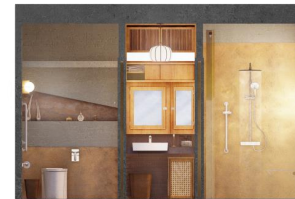
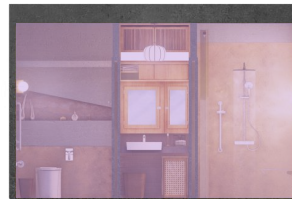
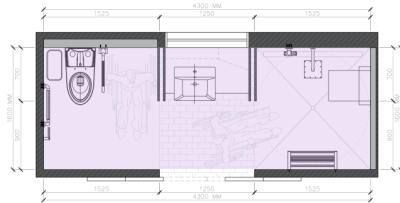
Self-Sufficiency.

As children grow and the elderly age, a successful mixed-aged household plans and anticipates. Therefore, this must be reflected in a design that is accessible, inclusive, flexible, and supportive.

By designing for self-sufficiency rather than permanence and stability, the design's convertible core accommodates changing demands over time. Through providing options for wide clearances and curating free-standing vs. built-in furniture, floor areas can be expanded to help with mobility limitations that may emerge later on while minimizing the need for renovation as well.



Full Bathroom Perspective in 10-15 years



Private Zones

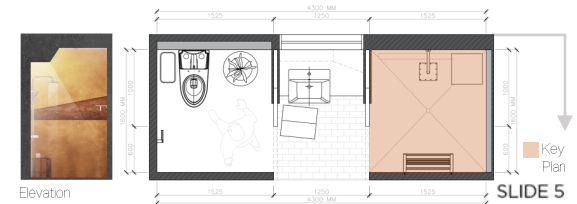
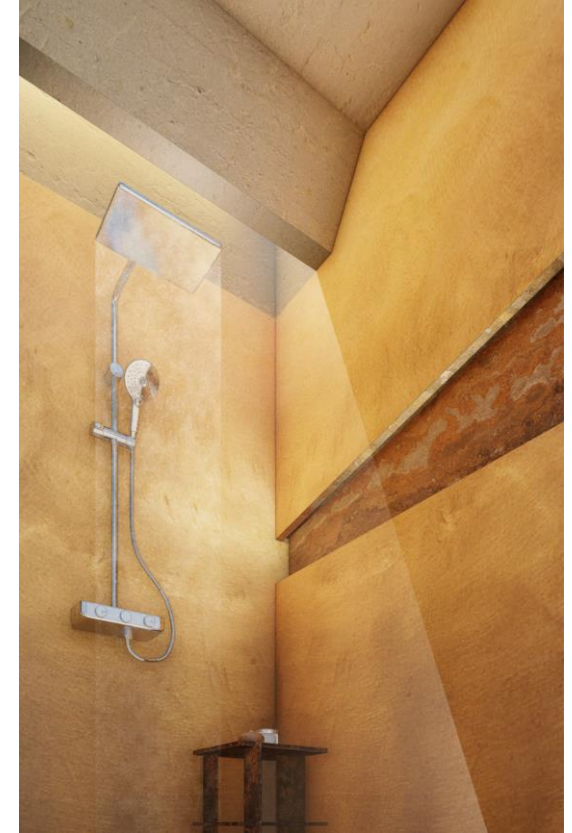
Design Visuals: Shower Area

A Restful Ritual.

Bathing is rooted in ancient traditions which evolved around the act of inner and outer purification. While bathing has transformed over the past centuries, this primitive pleasure has become a part of people's everyday lives—"a place where they get ready for the challenges of the day and a place where they wind down and relax for the night."

The shower area features a skylight that signifies the passing of time, creating dynamic geometric forms throughout the day by utilizing natural light. To the right, a recessed niche provides adequate space for varying bath products. Moreover, this one level shower area creates a continuous flow that removes trip hazards for children and elders.

as:da
american
standard
design
award
asia
pacific
2023

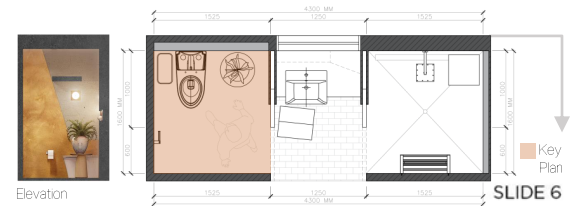
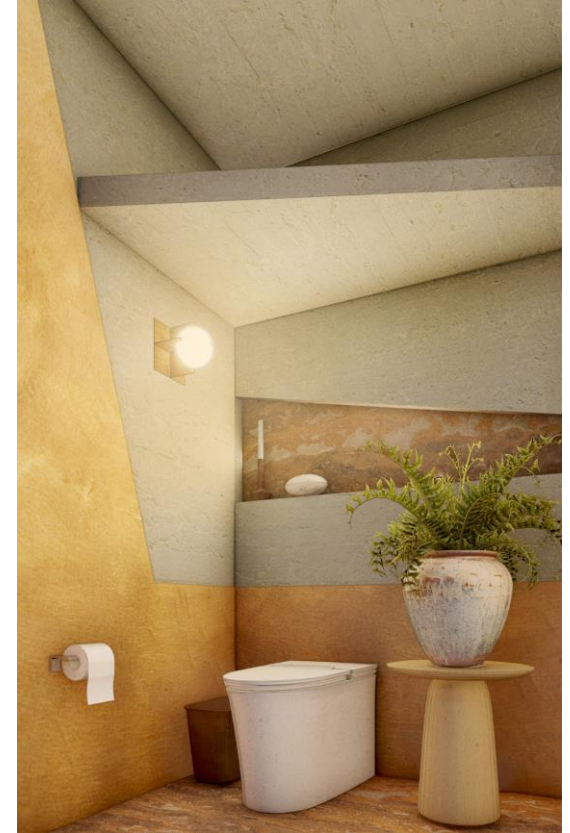


Design Visuals: Toilet Area

Tankless Toilet.

The toilet area highlights American Standard's Studio S Tankless Toilet—a sleek, powerful, and water-saving design that is "easy to get on and off, especially for the elderly, pregnant and disabled." Similar to the shower area, this space makes use of a recessed niche and an overhead shelf for additional storage.

Designed to be future-proof, the side table may be removed to provide proper wheelchair clearance. This layout allows the wheelchair user to approach the toilet in a parallel position which is considered as the easiest approach by the *United Nations' Design Manual for a Barrier Free Environment*.



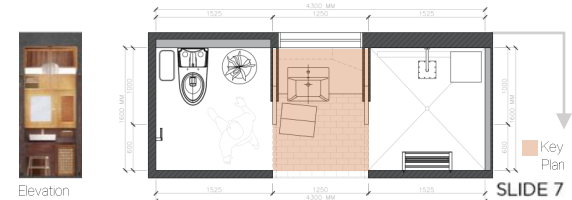
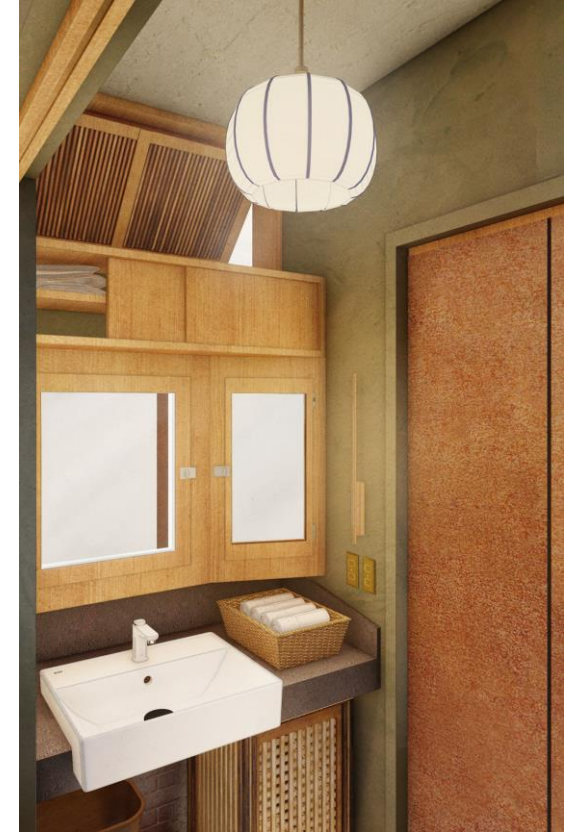
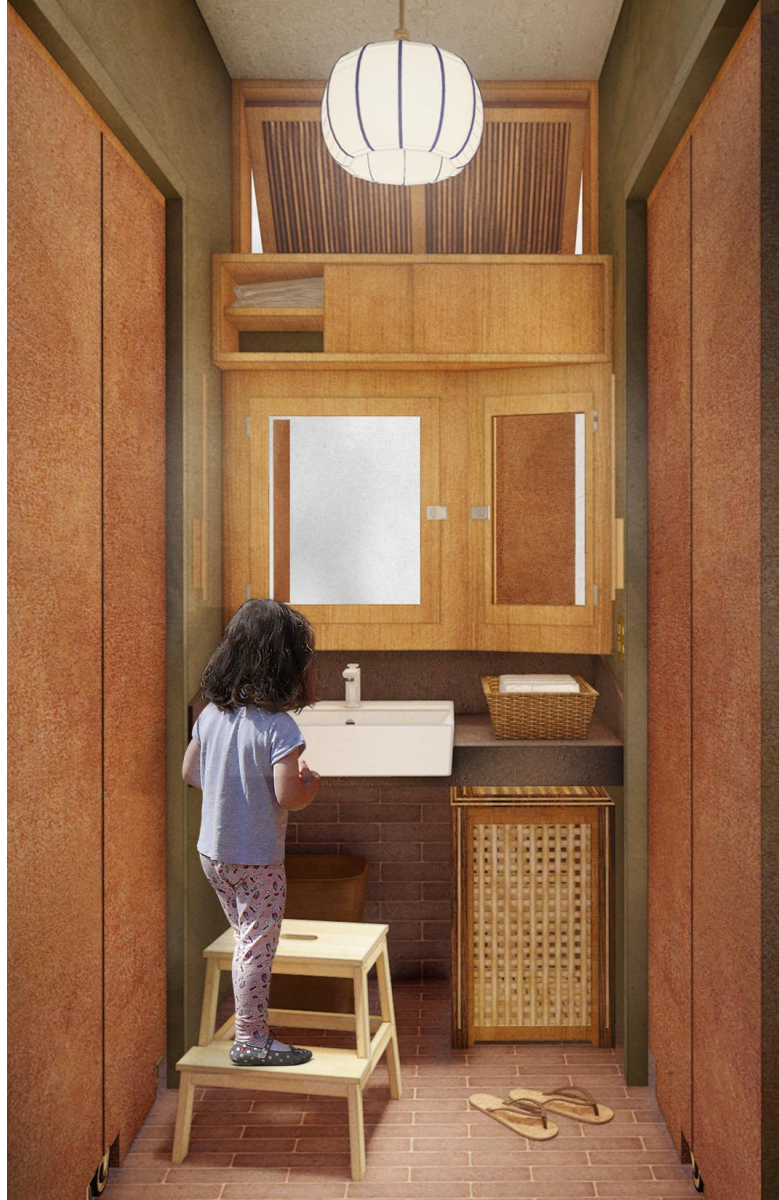
Design Visuals: Basin Area

The Communal Spine.

Considered as the "communal spine," the basin area is a shared space that joins the shower and toilet areas. While the behavioral patterns of each family member is different, providing a common space encourages connection between generations.

A floating vanity hides the laundry basket, trash bin, and children's step stool while at the same time complying with accessibility standards. Above, a dual medicine cabinet and overhead storage is used to maximize vertical space.

as:da
american
standard
design
award
asia
pacific
2023

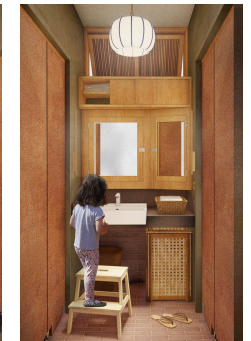
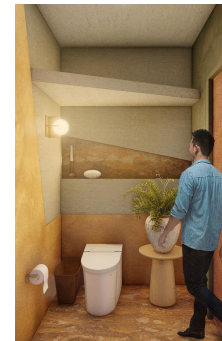
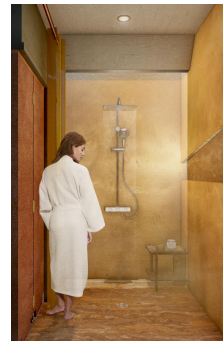
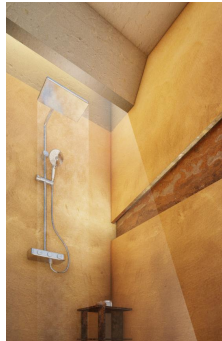
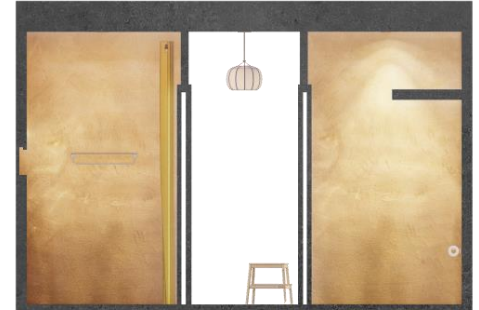
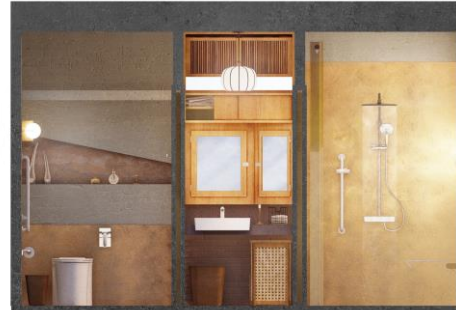
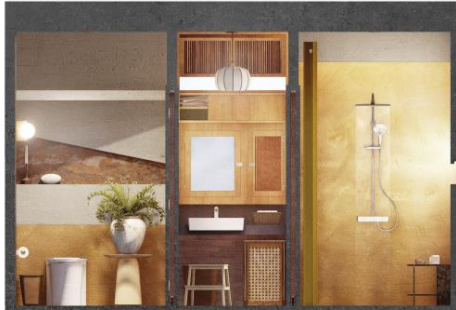


Design Visuals: Optional Images/ Information



A Whole And Its Parts.

By considering the multigenerational family as a single unit composed of diverse parts signifies that the spaces they inhabit must be approached similarly. This project attempts to create a unified whole while acknowledging individuality. In its search for alternatives, the proposal addresses questions of aging and hopes to reconcile rather than defy. By putting the young next to the old and the present next to the future, a solution is uncovered in its own complications.



Design Visuals: Optional Images/ Information

As You Please.

[Right] Possible vignettes.

The option to make changes to the location of the bathroom allows the design to meet specific needs depending on a family's priorities and spatial constraints. By making customization compatible with standardization, this collaborative approach encourages the users to become a part of the design process. Whether front or back or inside or out, different needs can be articulated in a way where efficiency and adaptability go hand-in-hand.

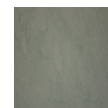
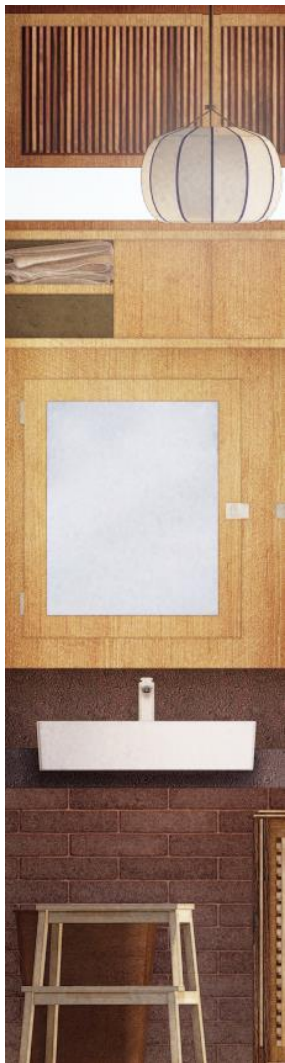


Specifications: Colors, Materials and Finishes

Deliberate Decay.

Weathering Walls interrogates and reimagines how the physical materials we specify develop once met with the moving materials of the space—sun, water, and air. Often as designers we fail to account for this inevitable process and in effect, fail to manage the passing of time. What happens when we choose not to intervene? Can we curate decay?

Rather than settling for continuous replacement and renovation, a selection of long lasting, reliable, and practical materials can promote longevity and sustainability. This deliberate consideration, coupled with the idea of aging beautifully, adds to both the design's function and integrity.



■ **Clay Plaster**
Regulates humidity,
minimizes fungal growth,
and absorbs odor.



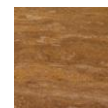
■ **Concrete**
Durable, water resistant,
and easy to clean.



■ **Pine Wood**
Gains a grey-blueish
sheen over time.



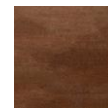
■ **Copper**
Antimicrobial and famed for
developing a green patina
across its surface.



■ **Non-slip Marble Tile**
Durable, moisture
resistant, and low
maintenance.



■ **Non-slip Brick Tile**
Durable and mimics an
artisanal look.



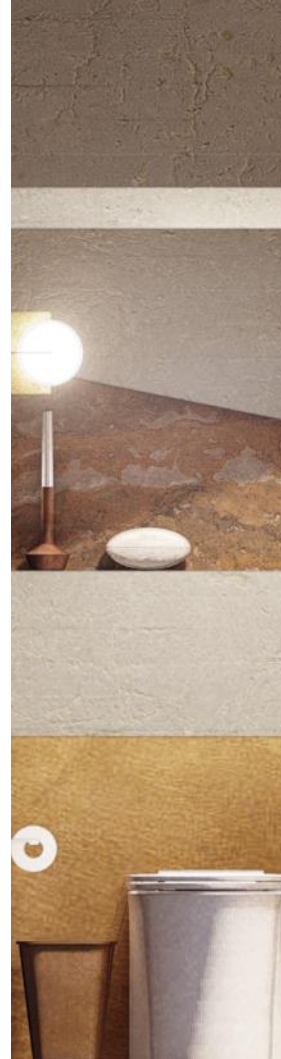
■ **Corten Steel**
Low maintenance steel that is resistant to
further corrosion and has high strength.

American Standard Products Specified

For All Stages.

Proven to be suitable for all stages of life, the products chosen aid in American Standard's vision of "making life healthier, safer and more beautiful at home, at work, around town and throughout the world" as they "continue to raise the bar in delivering dependable bathroom solutions that combine purposeful designs and innovative technologies."

- **01 Toilet:** Studio S Op 4.8l Powerflo Tankless (CCAS3232-1110410TQ)
- **02 Tissue Holder:** Acacia Evolution Tissue Holder (FFAS1387-908500BCC)
- **03 Basin:** Acacia SupaSleek Semi-Counter Basin 550mm Single-Hole (CCASF419-101041FQ)
- **04 Faucet:** Easyflo Basin Mono (Glossy White) (FFAS1823-109090BFO)
- **05 Shower:** EasySET Exposed Shower Auto Temperature Mixer with Integrated Rainshower Kit (FFAS4955-701500BCC)
- **06 Towel Shelf:** Acacia Evolution Towel Shelf (FFAS1395-908500BFO)
- **07 Grab Bars:** 90 Degree Angle Safety Grab Bar (FFAS9401-000040BCC)
L Nylon grab bar (Right) (FFAS9405-000040BCC)
Shower Nylon grab bar (FFAS9406-000040BCC)



Base Products



■ **01** Easy to get on and off, especially for the elderly, pregnant and disabled.

■ **02** Durable, scratch resistant, modern, and easy to maintain.



■ **03** Modern design, thin edge, and crafted with the latest technology.

■ **04** Easy to operate and water-saving for ecological and economical sense.

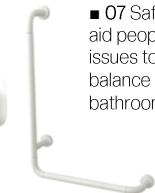


■ **05** Hand shower holder allows you to easily adjust its height, single-handedly. It also creates extra usable space in the bathroom.



■ **06** Allows multiple towels to be hung or stored in a single wall-hung shelf.

Products in 10-15 years



■ **07** Safety grab bars aid people with mobility issues to maintain their balance as they use the bathroom.

Appendix

Design Story – Limit to 150 words per answer.

- What is the inspiration for your design?

Inspired by the idea that a solution can be found in the problem, *Weathering Walls* looks at the concept of aging to address issues of individuality, difference, and the changing needs of the multigenerational family. In doing so, it brings the present and the future together in a singular shared space, presenting alternatives for this household configuration to prosper in place.

- How does the design fulfill the need of the target users?

The varying needs of the target users were fulfilled by using a simultaneous strategy and designing for self-sufficiency. Through this focus, connection between generations was encouraged while spatial boundaries maintained necessary privacy. For the children, safety and interdependence was prioritized. For the parents, ritual and refuge was sought. For the elderly, freedom and support was obtained.

- How does the design fulfill the design challenge?

The design introduces a dual purpose layout that is intended to grow with you. Functioning as a flexible module, doors move to separate and join, furniture come and go to expand and to comply, and finishes decay to archive and continue to materialize.

- How does the choice of products contribute to the purpose of the design?

Base products (e.g. toilets, basins, showers) and products that may be needed in 10-15 years (e.g. grab bars) were identified in the design—proving that American Standard products are suitable for all stages of life. Moreover, American Standard's innovative technologies, high quality materials, and timeless designs promote sustainability, longevity, cleanliness, and ease of use.

