

A Home to Love A Space for Everyone Design Entry Template



as:da

american
standard
design
award

asia
pacific
2023

Multipurpose bathroom ASDA23-30826

SLIDE 1



*American
Standard*

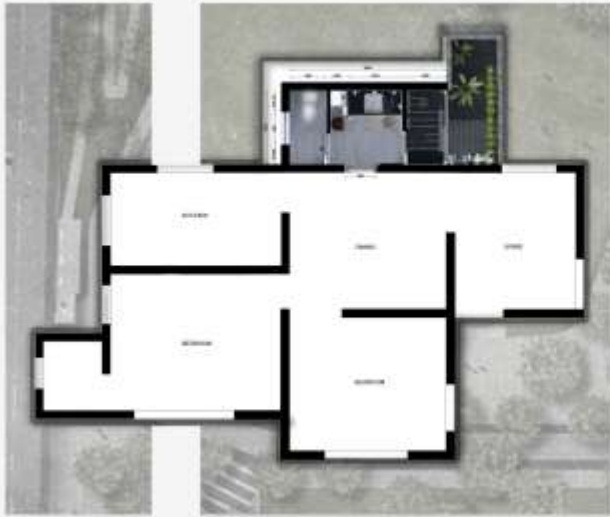


Design Concept Summary

I wanted to design a bathroom which can hold multipurpose activities at the same time, that it helps to create an overall positive environment at home for all family members. Instead of bringing the nature to the interior space ,I brought the interior(bathroom) out to the nature , to make the users more comfortable in terms of functionality and appearance. when compared to the apartments, deminished spaces reduce the functionality of each space especially the bathroom.so this design holds the purpose of the common wash area, the dressing area, apart from a normal bathroom space.

Design: Floor Plan and Elevations

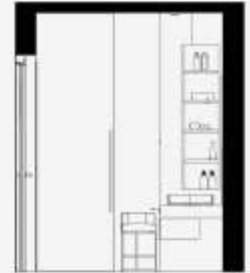
The bathroom space here designed was considering the importance and usability, which is close to the dining, living and kitchen, which is easy to use for the guests also. Its acts as a common wash for all. The heights used for all the equipments are very suitable for parents, grandparents and childrens.



FLOOR PLAN



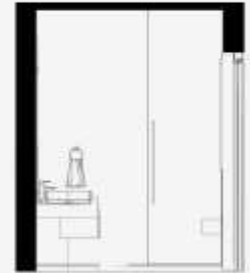
FRONT ELEVATION



RIGHT ELEVATION



BACK ELEVATION



LEFT ELEVATION

Design Visuals: Full Bathroom

The space is arranged in a linear form. The toilet area, wash area and the shower area separated by the glass door.

These areas can be used for different users at the same time, which helps to save time. With the use of curtains which provided for more privacy.



Design Visuals: Shower Area

The shower area is the another highlighting area inside the overall space, which is brought out to the nature. Traditionally, bathrooms have been seen as functional space, impersonal and unattractive. In order to overcome this I designed the space which makes the user more comfortable. A place for relaxation and self care and also it recreates a private area using the curtains provided. Natural light, lush green and the shower brings the user more relaxation. There is a sitting area provided on the opposite of the shower space, the one can sit and relax there, or sit and read books within the nature. Which helps the user to easily connect with the nature.



Soap holder-80cm
Seating height-45cm
Towel bar height-120cm



Design Visuals: Toilet Area

Shelf height-85cm.



Design Visuals: Basin Area

The entrance is in to the common wash area that's use the most .which itself act as a dressing unit. Its a solution for the diminished space in the bedrooms. Small portion above the basin area is placed with roof glass. Which helps to gain more natural light throughout the day. Stripped lights are used under the glass shelves to make it more elegant in the night.

Wash basin height- 75 cm
Hanging towel height-100cm
Tissue holder-75cm.



Specifications: Colors, Materials and Finishes

The black, Brown and white
themed bathroom, with glass
doors and glass roof above the
basin area.



Black with
brown lined
marble tiles



white with
brown lined
marble tiles



Wooden
laminate



Glass



**American
Standard
Products
Specified**



Studio s op 4.8L
powerflo tankless



Acasia evolution
concealed bath and
shower mixer



Acasia evolution
basin mixer



Hygiene spray glossy
white



Easy SET 250 mm square
brass rain shower head



Acasia supasleek
square vessel wash
basin



Acasia evolution
Soap dish



Acasia evolution
tissue holder



Acasia evolution
Towel bar

Appendix

Design Story – Limit to 150 words per answer.

- What is the inspiration for your design?

I wanted to design a bathroom which can hold multipurpose activities at the same time, that it helps to create an overall positive environment at home for all family members. Instead of bringing the nature to the interior space, I brought the interior(bathroom) out to the nature, to make the users more comfortable in terms of functionality and appearance. when compared to the apartments, deminished spaces reduce the functionality of each space especially the bathroom.so this design holds the purpose of the common wash area, the dressing area, apart from a normal bathroom space.

- How does the design fulfill the need of the target users?

The target users are the family of six members including parents, grand parents and the two kids of age 5 to 10. The space can designed by considering these users,so that the kids can reach the height of items like towels,tissues etc. The sitting area in the shower space brings the user for more relaxation and which helps to connect the user to the nature without any interference. Seating area is also provided in the common wash area which helps the user to sit and make-up act as a dressing unit.

- How does the design fulfill the design challenge?

The washroom in a house is not just used by the members of the house but also by guests, thus this space look more presentable and its well connected to the nature also.

- How does the choice of products contribute to the purpose of the design?

The products are selected based on the functionality and look. Which helps to keep the design more interesting.

as:da

american
standard
design
award

asia
pacific
2023

**Your idea can
shape how we
create homes
to love**

*American
Standard*

