

A Home to Love A Space for Everyone Design Entry Template



as:da

american
standard
design
award

asia
pacific
2023

A SAFE HAVEN A PLACE TO UNWIND ASDA23-10055

SLIDE 1



*American
Standard*



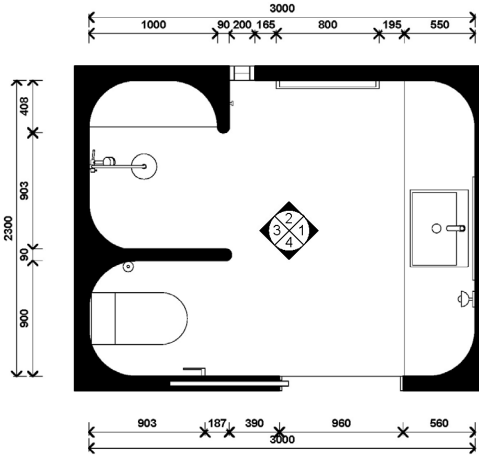
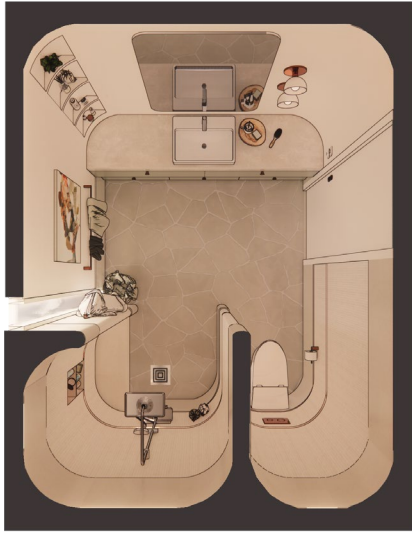
Design Concept Summary

In today's world, high mass housing is increasing along with multi-generational families living under the same roof each with their own specific needs. Keeping this in mind, presenting a space that would cater to everyone while creating a calm atmosphere would be extremely important to achieve a balanced room that provides both emotional and physical safety. With that being said, one of the most used spaces in homes is the bathroom which is why it would be a suitable space to incorporate a unique design that would create a safe haven.

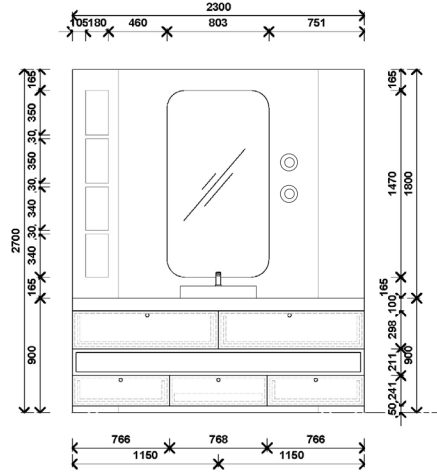
Design: Floor Plan and Elevations

The bathroom layout was created with a specific design in mind that would allow a distinctive flow and make it easy to access each area along with providing enough space for wheelchair or walker accessibility.

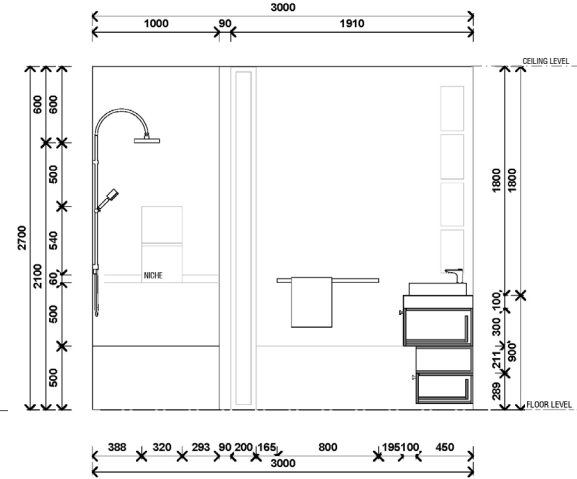
The implementation of curves is one of the main features of the overall design as it creates a sense of softness and safety as well as eliminating any sharp edges or corners that could cause potential harm.



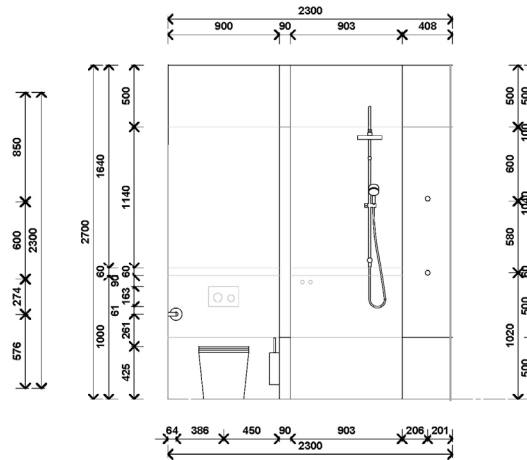
BATHROOM PLAN
SCALE 1:25 @ A3



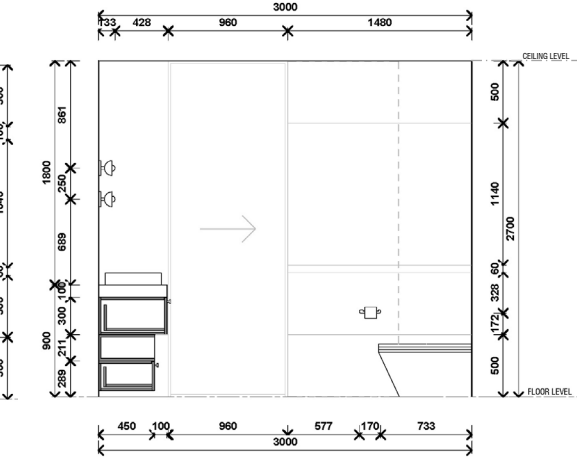
ELEVATION 1
SCALE 1:25 @ A3



ELEVATION 2
SCALE 1:25 @ A3



ELEVATION 3
SCALE 1:25 @ A3



ELEVATION 4
SCALE 1:25 @ A3

Design Visuals: Full Bathroom

The main design purpose of the bathroom was to create a safe space that emits softness and serenity with a hint of playfulness. This was achieved through choosing specific materials and finishes such as the warm beige tiles across the walls paired with non-slip crazy pave flooring and brushed copper accents along with different shades of green.

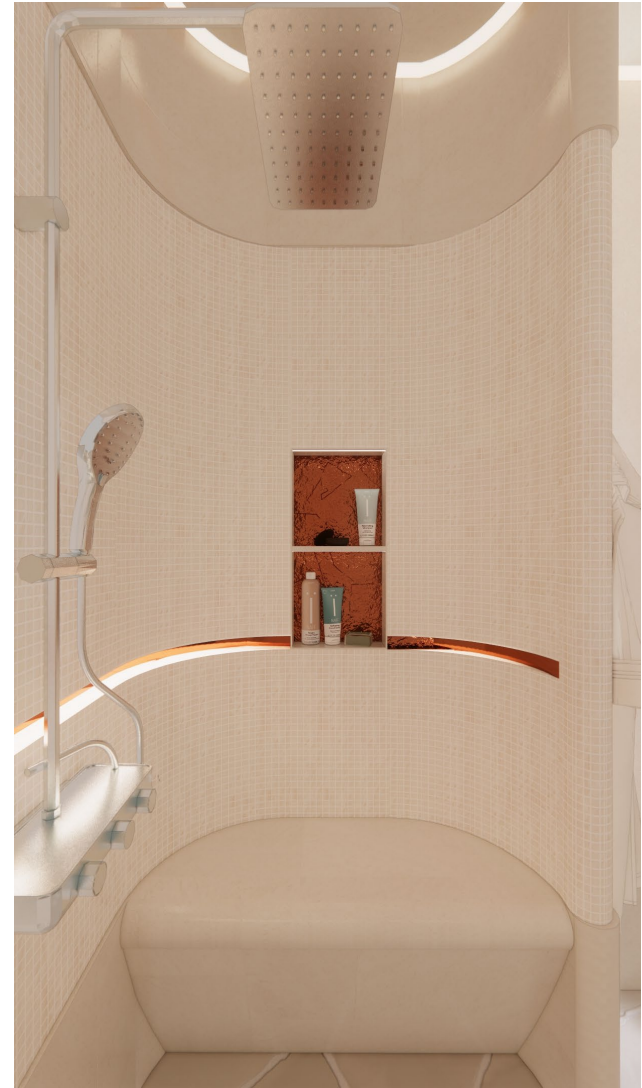


Design Visuals: Shower Area

The shower area was designed in a way where one would feel like they are in a small cozy space that still feels open. It has a built-in seat that is suitable for everyone to use and a temperature-controlled shower mixer that would prevent getting scalded by hot water. The opening is wide enough to allow access for someone with a walker or wheelchair.

as:da
american
standard
design
award

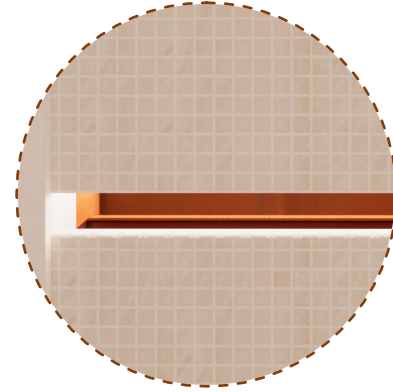
asia
pacific
2023



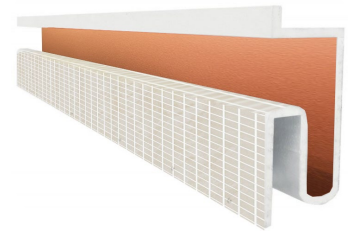
Design Visuals: Toilet Area

The toilet area is separated by walls on each side along a curved back wall to create its own safe secluded space.

Instead of inserting grab bars along each wall for the elderly, I had opted for a built-in handrail along the toilet and shower wall to save space and reduce the amount of objects protruding out of the walls. The built-in handrail has a copper material background with integrated strip lighting to create contrast against the limestone mosaic wall so that it would be easier to distinguish and become a feature within the space.

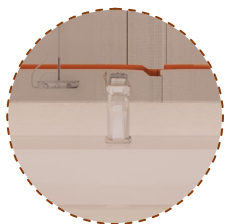


BUILT-IN HANDRAIL DESIGN



Design Visuals: Basin Area

The basin area consists of built-in storage drawers with brushed copper cabinet knobs for an easier grasp. A basin tap that works with a small push in order to turn on or off has been selected as it is easier to use as well as it being water saving especially with rise of water bills. The middle bottom drawer is a step to help children reach the sink to wash their hands.



PUSH BUTTON BASIN TAP

as:da
american
standard
design
award
asia
pacific
2023



**Design
Visuals:
Optional
Images/
Information**

Toilet and shower area
render.



Design Visuals: Optional Images/ Information

One of the main features of the basin area which has been previously mentioned is the drawer step for children.

The step itself has been designed in a way that it looks like the rest of the drawers so that the vanity design is cohesive. It has a copper knob like the other cabinets in order to make it easier for children to pull it out and put it back in its place.

The step itself is 170mm high from the floor which makes it as high as a stair step.

A 50mm gap from the floor to the bottom lower drawers has been created to prevent any water from touching the cabinetry and allowing some space to clean that area.



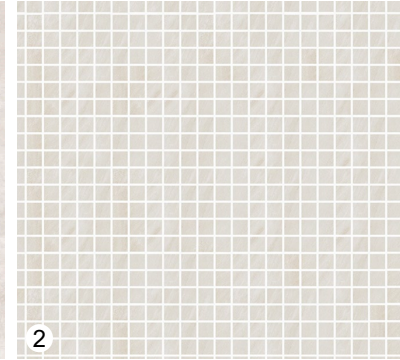
Specifications: Colors, Materials and Finishes

A soft and delicate colour selection with pops of colour inspired by Australian landscape and a blend of satin and matt finishes to create interest.

1. Urban white porcelain concrete
2. Limestone mosaic tiles 23 x 23mm
3. 2pac joinery finish in Dulux_medlar
4. Brushed copper metal finish
5. Matt crazy pave tiles with seamless grout finish (non-slip)
6. Beige satin tiles
7. Chrome metal finish



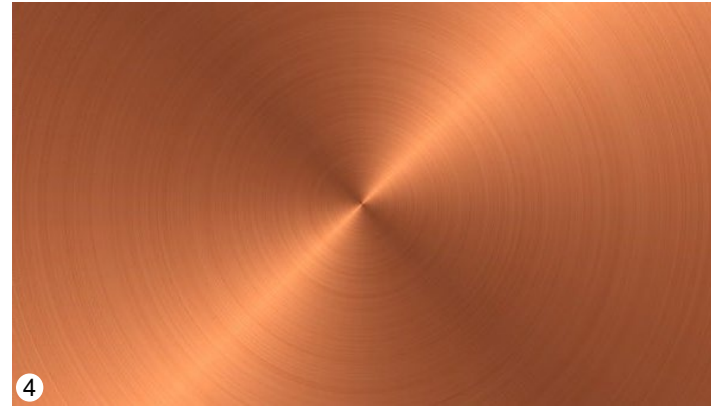
1



2



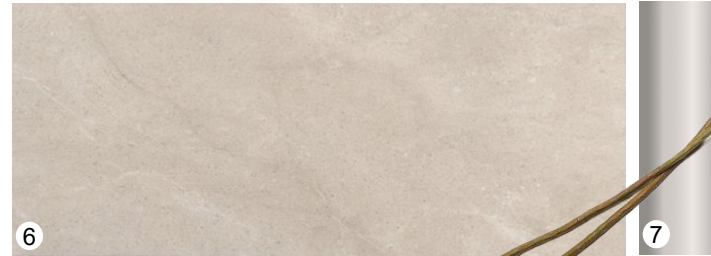
3



4



5



6

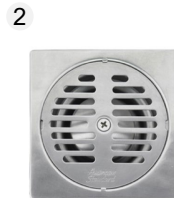


7



American Standard Products Specified

1. Easynet Exposed Shower Auto Temperature Mixer With Integrated Rainshower Kit
2. Floor Drain 3.5" Square (Stainless)
3. Studio S Op 4.8l Powerflo Tankless
4. Easyflo Basin Mono (Chromed)
5. Vessel 600mm Single-Hole L450 x W600 x H110mm



Appendix

Design Story – Limit to 150 words per answer.

- What is the inspiration for your design?

Safety was the first word that came to mind when reading the brief. One of the of the words that associate with safety is curves as they have no sharp edges and link to softness and direction which is why I wanted to implement that specific feature in my design. In addition, I wanted to incorporate something that relates to Australia and that is where I had thought about Australian landscape colours which would suit the theme that I was going for. Therefore, I wanted to create a safe and functional space fused with pops of colour derived from the Australian landscape that would fulfill a multi generational family's wants and needs.

- How does the design fulfill the need of the target users?

Before starting the design phase, I had done some research on what needs to be included in a functional bathroom and what would children and the elderly need in order to create a safe space for them. That is where I had outlined features that would need to be included and others that need to be prevented. For example: I had eliminated any glass screens such as shower screens as the elderly might be vision impaired and can easily bump into the glass wall and get hurt (same goes for children). As a solution, I had created a normal tiled partition wall with curved edges that would create some sort of support and eliminate the possibility of getting hurt. Etc..

- How does the design fulfill the design challenge?

The proposed design does not only focus on the functionality of a standard bathroom but it also takes into consideration all types of people and what their needs are along with the emphasis on emotional design through creating a specific atmosphere in the space. It is a place that welcomes all generations and serves as a safe haven.

- How does the choice of products contribute to the purpose of the design?

The products chosen have technology advanced features that suit the users such as the temperature-controlled shower mixer from Australian Standard which would prevent anyone from getting scalded by hot water and is a safer alternative from your standard shower mixers. One of the other products that really have an impact on my design is the studio S powerflo tankless toilet as it has a slow-close seating cover which prevents children from getting their fingers hurt and its height is suitable for the elderly, pregnant and disabled along with its aesthetics that compliments the curved features in my proposed design.

as:da

american
standard
design
award

asia
pacific
2023

**Your idea can
shape how we
create homes
to love**

*American
Standard*

