

as:da
american standard
design award

asia
pacific
2023

Home Within Home

The cure to your worries and stress.

ASDA23-10030





Design Concept Summary

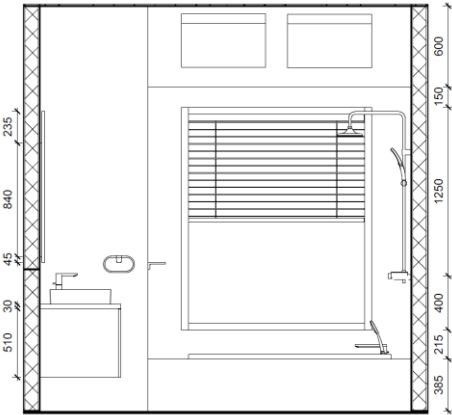
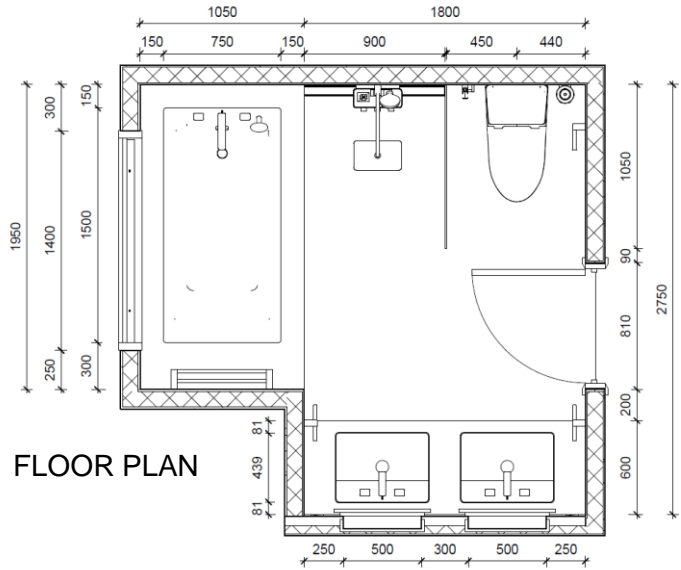
Your home: your haven and place of refuge... unless you live in a multi-generational household that is. Let's face it, home can be a chaotic place sometimes. Whether it be the kids fighting over the bathroom sink or the grandparents fed-up with the mess. We all desire a home away from home at some point. A tranquil space where all your stress and worries evaporate. But sometimes that is not always within the realm of possibility, so why not create a home within home?

This residential bathroom design aims to create a safe space for everyone in the family. A space that is accessible, functional, convenient and resilient. Utilising a practical floorplan that boasts appropriate amenities suited throughout life's changes. While also being low maintenance and evoking a sense of calm that alleviates the bustling energy that surrounds it.

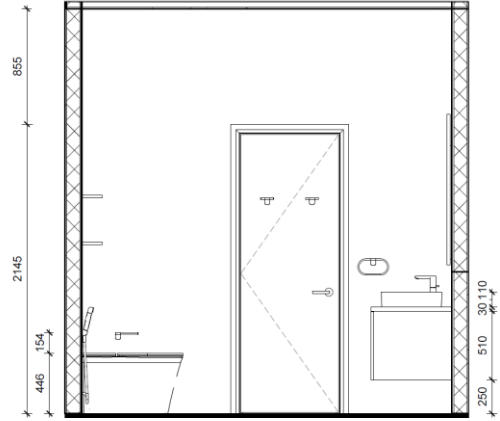
Welcome home!

Design: Floor Plan and Elevations

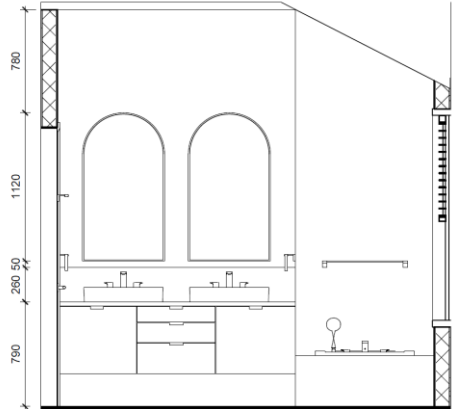
SCALE – 1:25 @ A3



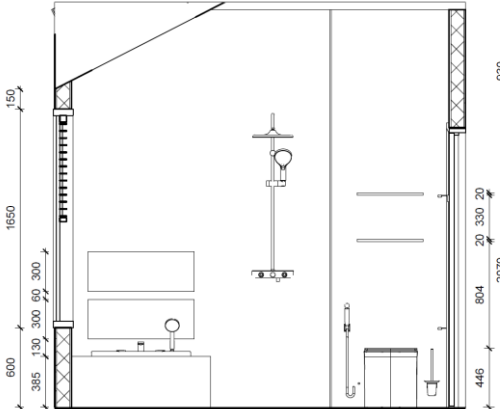
ELEVATION A



ELEVATION C



ELEVATION B



ELEVATION D

Design Visuals: Full Bathroom

As you enter the bathroom, the white porcelain tiles, sunken bath and window greet you. High ceilings open the space and let it breathe, while the skylights illuminate the room creating a sense of warmth.

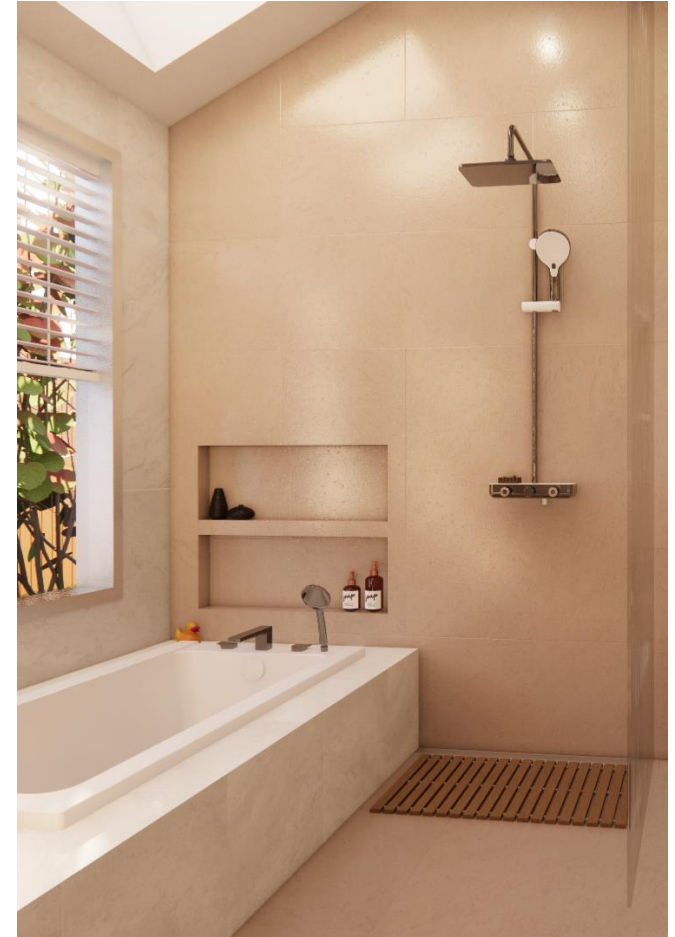
Ample natural lighting has been incorporated to add to the phenomenology of the space. Providing consistent ambient lighting that is prone to make anybody feel at peace. The space adapts an open floorplan with full visibility to ensure easy navigation and safety. While a minimal design with plenty of in-built storage optimises space and allows for convenience by minimising cleaning and clutter.



Design Visuals: Shower Area

Adapting both a bath and shower is necessary within a family household. A bath is more convenient for children, however as they get older, they will likely prefer a quick shower instead. I kept them separate as I did not want to compromise on a shower-bath due to its inaccessibility. A sunken bath has been chosen as they are more accessible for children and the elderly, thus providing more safety measures and ensuring everyone can use the space with comfort and ease. It also provides a ledge for the shower area that could be used as seating or additional storage without taking up any more space.

Specific zoning of a wet area has been used to keep water and mess contained. Large format tiles to minimise grout lines and cleaning. A niche allows for extra storage space. As well as venetian blinds for additional privacy. While the reeded glass adds texture and sensory interest to the space.



The shower area features the Acacia Evolution Deck-Mount bath & shower mixer and EasySET auto temperature shower mixer with integrated rainshower kit. EasySET helps minimize water usage and reduce shower time through pre-set water temperature and volume. Of which would be suitable to a large family household.

Design Visuals: Toilet Area

The toilet area features the Studio S tankless toilet, DuoSTiX™ hygiene spray and Acacia Evolution toilet brush and tissue holder accessories.

The studio S toilet has been specifically selected due to its water saving features that would be suited to and convenient for a large family household. Not to mention it's sleek design which helps save space and optimize cleanliness. While the mounted toilet brush makes it easy to clean around the toilet. As well as laminate wall-hung shelves to allow for extra storage and free up floor-space.



Design Visuals: Basin Area

The basin area features the Acacia SupaSleek 3-hole vessel and Acacia Evolution 3-hole basin mixer. They have been selected as they offer easier reachability for children, preventing leaking taps. While also differentiating hot and cold facets, preventing burns and maximising safety.

A double vanity is used to allow for multiple family members to use the space at any one time. It is custom made using oak laminate and a quartz benchtop. These materials have been selected due to their resilience which will withstand the elements and remain looking good for a long time. Being wall-hung optimises space and allows for storage underneath, such as a step ladder for the little ones, as well as easy cleaning.



Design Visuals: Optional Images/ Information

Custom recessed mirrors with laminate edging to match the vanity are used to provide more storage while maintaining a sleek design. They are a great space saving option when looking for more accessible storage. Helping to decrease clutter and maintain cleanliness. Concealed LED strips are also built into the vanity and mirrors which provide accent lighting without adding more surfaces to clean.



**Design
Visuals:
Optional
Images/
Information**



Specifications: Colors, Materials and Finishes

1. **White Paint.** *Ceiling, vanity wall.*
2. **Beige Porcelain Tile, Glazed.** *Walls, floors.*
3. **White Porcelain Tile, Glazed.** *Walls, bathtub.*
4. **Oak Wood Laminate.** *Vanity.*
5. **White Quartzite.** *Vanity benchtop.*
6. **Vertical Reeded Glass.** *Shower screen.*

The neutral and warm colour palette has been used to soften the space and evoke a sense of calm. Producing a timeless and simplistic design that will last and be loved by any age demographic.

When selecting materials, I wanted to ensure that the space was safe, durable and easy to clean. Withstanding the day-to-day shenanigans that occur within a family household. Low maintenance materials such as glazed porcelain tile, laminate and quartz have been selected due to their resilience and safety measures. Large tiles help minimize grout which provides for an easier clean. They also mimic natural materials which help create a warm and soothing feeling within the space, as informed by biophilic design principles.



American Standard Products Specified



EasySET Exposed Shower
Auto Temperature Mixer with
Integrated Rainshower Kit
FFAS4955-701500BC0



Studio S OP 4.8L PowerFlo
Tankless
CCAS3232-1110410T0



DuoSTiX™ Hygiene Spray
(Chrome/Glossy White)
FFASTS28-000090BT0



Acacia Evolution Dual Towel
Rack
FFAS1394-908500BF0



Acacia Evolution 3-Hole Basin
Mixer
FFAS1303-101500BF0



Acacia Evolution Deck-Mount
Bath & Shower Mixer
FFAS1300-601500BF0



Acacia SupaSleek Vessel
600mm 3-Hole 8"
CCASF420-1080411F0



Acacia Evolution Robe Hook
FFAS1381-908500BF0



Acacia Evolution Toilet Brush
FFAS1386-908500BF0



Acacia Evolution Tissue Holder
FFAS1387-908500BC0



Acacia Evolution Towel Ring
FFAS1390-908500BF0

Appendix

Design Story – Limit to 150 words per answer.

- What is the inspiration for your design?

I wanted the space to be low-maintenance and evoke a sense of calm, mitigating any chaos that may arise in a multi-generational home. My main concerns were cleanliness, safety and convenience. Which have been addressed through using a minimal design that is easy to navigate, clean, and maintain, materials that are robust and provide the correct safety measures, and amenities that cater to a vast age range. Guaranteeing everyone in the home can use the space with comfort and ease.

- How does the design fulfill the need of the target users?

The design was highly concerned with the way in which large families move through and utilize a bathroom, as well as the varying physical capabilities in a multi-generational home. As the bathroom is only 7 sqm, it is important to optimize space, however I did not want to compromise on the convenience and safety for families with elderly and young kids. Features such as the sunken bath that is separated from the shower is an example of this. As well as the double vanity and open plan which allows multiple family members to enjoy the space at one time without it feeling overcrowded. The minimal design also helps open the space and optimize cleanliness, all while providing a pleasant aesthetic appearance.

- How does the design fulfill the design challenge?

The design boasts appropriate amenities that delivers a convenient and safe space for the whole family, while still allowing for a pleasing aesthetic that will attract consumers. The bathroom is the space in which one starts and ends their day and as such I want consumers to be excited to use the space. Using biophilic and phenomenological design principles, I was able to design a space that anyone will feel good in. The natural light eases you into the morning, rejuvenating you. While the soft and warm colour palette evokes a sense of calm and relaxation – helping you wind down and forget your worries.

- How does the choice of products contribute to the purpose of the design?

More family members inevitably means more water usage and mess. The selected American Standard products help address the needs of family members in a multi-generational home due to their water saving features and sleek designs. Which help reduce shower times and water usage, while also optimizing cleanliness and thus creating a space that is easier to clean and maintain. Further contributing to the purpose of the design as they make for a more convenient and functional space that will be appreciated and loved by everyone in the family.

as:da

american
standard
design
award

asia
pacific
2023

**Your idea can
shape how we
create homes
to love**

*American
Standard*

