

Purposeful Design Transforming the Way We Live

Design Entry Template





Design Entry Template Guidelines

You will find the following slides in this Submission Template with specific titles and requirements for your submission as indicated below. Total number of your submission should not exceed 12 slides, beginning with (Slide 1: Project Name) and ends with (Slide 12: AS Products Specified).

SLIDE 1: **Project Name**

Input a concept title that reflects your idea.

SLIDE 2: **Design Concept**

Describe your concept in a nutshell, keep it within 150 words.
NOTE: You will elaborate more in the Design Story Document.

SLIDE 3: **Design: Floorplan and Elevations**

Organize your drawings to tell your story.

SLIDES 4-9: **Design: Visuals**

Present your concept with your renderings.

- Slide 4: Full Bathroom
- Slide 5: Shower Area
- Slide 6: Toilet Area
- Slide 7: Basin Area
- Slide 8-9: Optional Images

SLIDE 10- 11: **Specifications: Colors, Materials and Finishes**

SLIDE 12: **American Standard Products Specified**

List down the products that are used in your design.

The Ceramic

Participant ID: ASDA22-90100





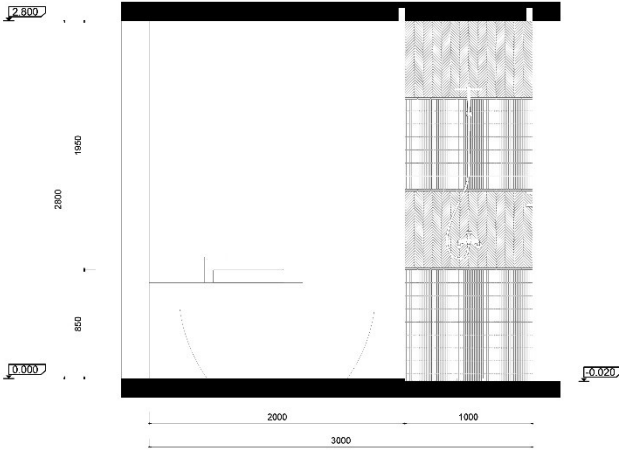
Design Concept

After the 4th outbreak in Vietnam, Hanoi city in general and Bat Trang commune in particular had to close and staying in a residential space for a long time has become a big problem for people. People and especially people in Bat Trang still have to deal with trade and import and export of goods has become a big concern for people. Relaxing the mind during this time is a top priority to help people have a comfortable spirit to continue working in life, the spaces in the past were used less such as toilets... more emphasis on design. Asking the question is why for users to want to stay and see more of the bathroom space and enjoy in that space as much as possible, to answer that question is the product of their own homeland. included in the design? Is this space comfortable and can I enjoy it?

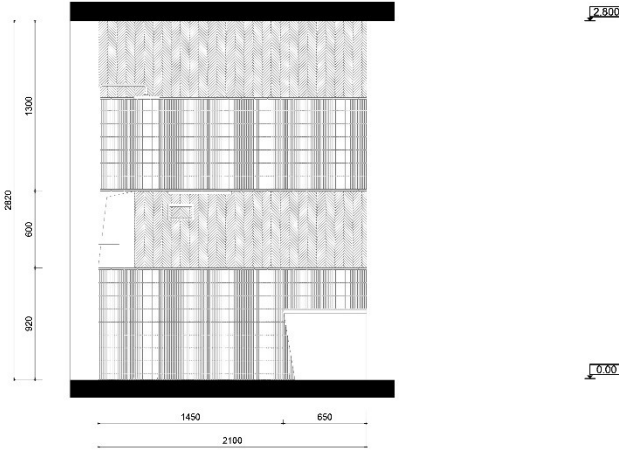
From the questions and the actual situation I realized, the house in Bat Trang was used for a homeowner who is a ceramic manufacturing business owner (ceramic tiles) to design a bathroom space in the house. But with all the functions of a bathroom of a villa - the hotel is designed to help homeowners have a space to enjoy after a tiring day with materials made by their own hands.



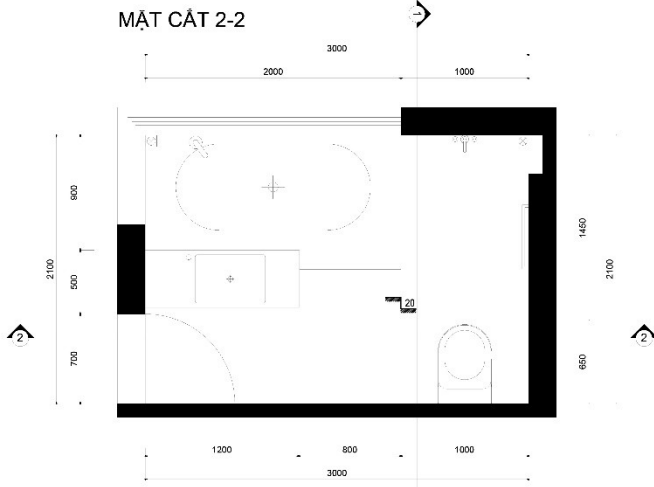
Design: Floor Plan and Elevations



MẶT CẮT 2-2



MẶT CẮT 1-1



MẶT BẰNG

0 0.5 1 2 3

Design Visuals: Full Bathroom

The space has a total area of 6.3 m2 but has full utilities and functions like a resort space with a free standing bathtub overlooking the green space outside the house.



Design Visuals: Shower Area

The space for the bath is where there is an open space with a 90-degree view, so that during the relaxing time with the bath, there is also a view of the natural space in the middle of the ancient village.



Design Visuals: Shower Area

The standing shower space combined with the bathtub area makes it convenient for the user to change the purpose of use and the space for the support products to lie low below and combine it with bathing, standing as well as use while taking a bath.



Design Visuals: Toilet Area

Spotlight light helps spaces to be emphasized in important positions such as sanitary equipment and helps the space to become more beneficial.



Design Visuals: Basin Area

With a 'flying' sink design and placed parallel to the bath, it saves space. In a space with a minimalist design with a dark blue tone as the main color tone, the lavabo is used in enamel color that is both a highlight for the whole room and also brings attractiveness when combined with the mirror 'free form'.



**Design
Visuals:
Optional
Images**



**Design
Visuals:
Optional
Images**



Specifications: Colors, Materials and Finishes

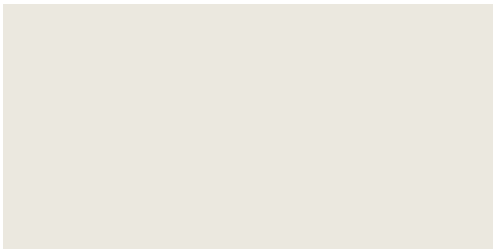
When designing a bathroom space that brings personality to the user, the minimal use of typical materials of Bat Trang craft village such as white enamel - celadon - coral or typical and Highlighted in recent years and popular for customizing are mosaic tiles. Taking the mosaic tile product as the center of the design, in order to bring attractiveness in a space with the most minimal use of materials, the arrangement of bricks in different forms has helped solve the problem. this. In addition, the design also uses other special materials such as large-grained gray terrazzo, grained pine wood and 2 types of ceramic tiles.



Specifications: Colors, Materials and Finishes



Pine Wood



White Glaze



Green Glaze

American Standard Products Specified

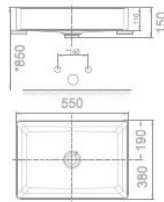


MÔI

Chậu rửa đặt trên bàn
Acacia SupaSleek

WP-F412

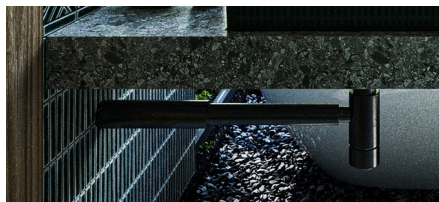
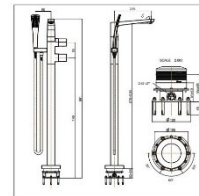
W380xL550xH150 MM



Vòi bốn tầm
La Moda

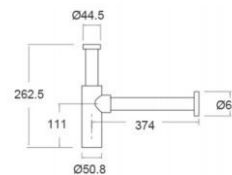
WF-0816

Nóng lạnh



Bẫy nước chữ P

A-8105



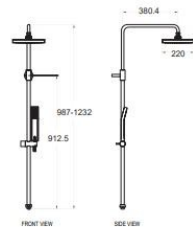
	Acacia Evolution
Mã Sản Phẩm	WP-1806
Kiểu Xả	Siphon Jet
Thể Tích Xả	3.5 / 5 L
Kích Thước (W x L x H)	415 x 649 x 550 mm
Tâm Xả	305 mm, S-Trap
Vệ Sinh	



Cây sen
Moonshadow D20S

A-6110.978.903

Không bao gồm bộ trộn



**May Your Idea
Make a Difference
Good luck!**

