

Home away from home

Design Entry Template

American Standard



Design Entry Template Guidelines

You will find the following slides in this Submission Template with specific titles and requirements for your submission as indicated below. Total number of your submission should not exceed 14 slides, beginning with (Slide 1: Project Name) and ends with (Slide 14: Appendix).

SLIDE 1:
Project Name

Input a concept title that reflects your idea.

SLIDE 2:
Design Concept

Describe your concept in a nutshell, keep it within 150 words.

SLIDE 3:
Design: Floorplan and Elevations

Organize your drawings to tell your story.

SLIDES 4-10:
Design: Visuals

Present your concept with your renderings.

- Slide 4: Overview
- Slide 5: Full Bathroom
- Slide 6: Shower Area
- Slide 7: Toilet Area
- Slide 8: Basin Area

SLIDE 11-12:
Specifications: Colors, Materials and Finishes

SLIDE 13:
American Standard Products Specified
List down the products that are used in your design.

SLIDE 14:
Appendix
Elaborate your design story.



as:da

american
standard
design
award

asia
pacific
2024

**Limitless Space,
Limitless Experience
ASDA24-33548**

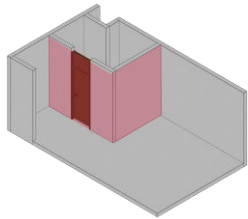
American Standard



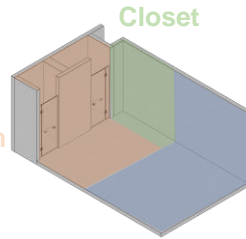
Design Concept Summary

'Limitless Space' explore the idea on how spaces can be molded in a way that defy human norm. With clever spatial arrangement and design element a bathroom can be fully integrated into a bedroom and a closet improving ease of movement and creating a much more seamless transition from one room to another, in a sense creating a 'Limitless Experience'.

'Limitless Space' can also be taken in a much more literal way through purposeful design decision to remove hard boundaries (Wall) that separate each room and installing barrier only where privacy matter the most in shower and toilet space. Removing this barrier also improve versatility by giving guests option on what and how they want to interact with part of the bathroom independently.

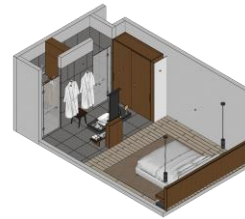


Bathroom



Closet

Bedroom



Boundary Removal>
Taking down the wall that enclosed the bathroom.

Space Integration>
Combining each bathroom, bedroom and closet as one.

Dis-Programming
Bleeding each room function together influencing its layout.

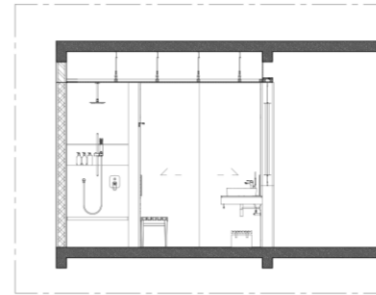
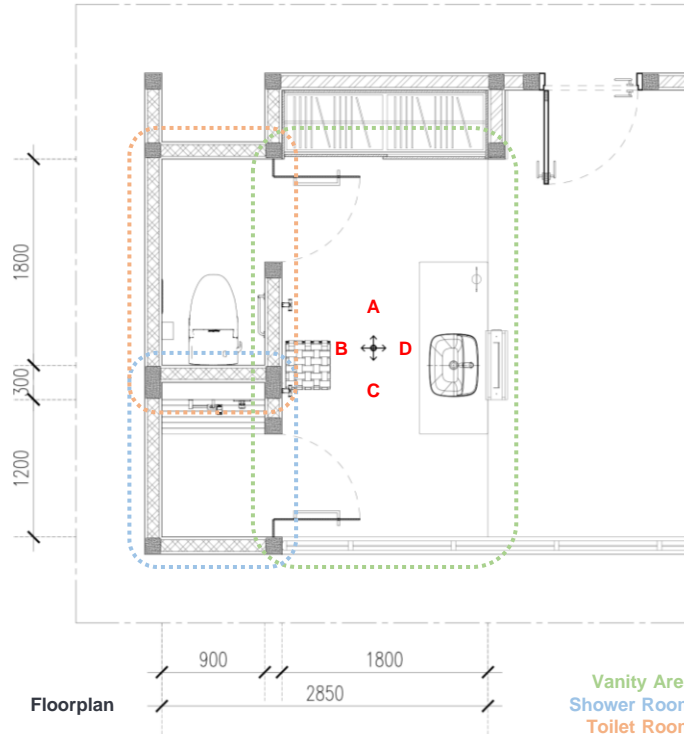
Design: Floor Plan and Elevations

Right:
Floor Plan

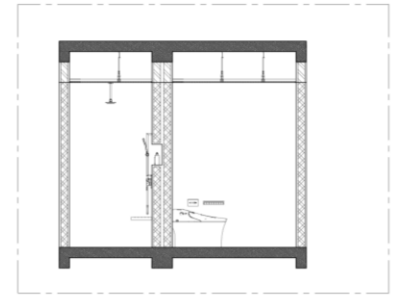
Elevations (From top, counter-clockwise):

- Elevation A
- Elevation B
- Elevation C
- Elevation D

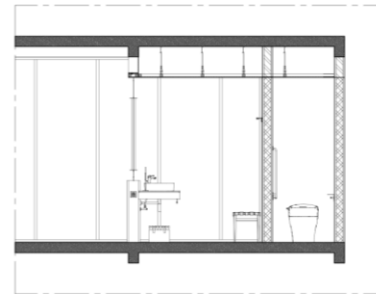
The Bathroom is laid in a linear manner with private spaces located at the back separated by a translucent glass door for each the shower and toilet room, both rooms are connected to the larger bathroom / closet / bedroom are connected through the more open vanity area.



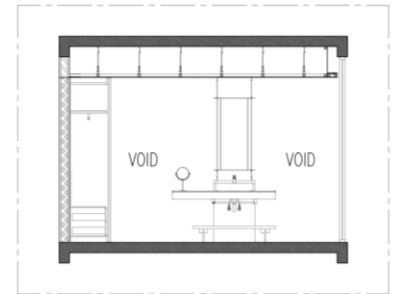
Elevation A



Elevation B



Elevation C



Elevation D

Design Visuals: Overview

The bathroom layout perfectly frames the view across the floor to ceiling window bringing in an outpouring of natural light helping to brighten up the room and reduce moisture preventing damp atmosphere inside the bathroom and discouraging mold growth.

An enclosed toilet and shower room are separated by translucent glass doors providing ample privacy for user while also allowing natural light to penetrate into the respective spaces. Freestanding vanity island occupy the front of the bathroom, subconsciously separating the space from the bedroom with two entrance point located at both ends of the vanity.

The Bathroom layout creates a design quirk in which guests can easily access the bathroom from both side of the bedroom, eliminating the need to tiptoe around the bed during the night in hopes of not disturbing others in the room.



Design Visuals: Full Bathroom

The Bathroom features a effortless blend of sleek black hues and warm wood tone providing a sophisticated, modern yet stylish feel of a home away from home.

The expansive space is primarily clad in Bornean Ironwood and Natural Basalt Stone.

Legendary for its ability to resist bacteria, fungi, termites and durability against moisture makes Bornean Ironwood a highly sought after material. Bornean Ironwood features a reddish brown tone that gradually patinaed into a darker brown shade and continually emit a pleasant citrus-like scent when cut.

Natural Basalt Stone is chosen for its dusty grey shade and toughness. Basalt is well known to resist scratches from wear and tear better compared to similarly popular natural stone the likes of Marble and Travertine.



Design Visuals: Shower Area

The shower room is equipped with a selection of 12" Head Shower for EasySET and handheld shower completed with Moon Shadow 400 Shower Kit and Signature Concealed Bath and Shower Mixer to provide versatility in its use. The shower also comes with a built-in amenity shelf and sintered stone clad seating bench giving a comfortable space for elderly and people to wash especially the lower body preventing slipping accident.



Design Visuals: Toilet Area

The Toilet Room features *Aerozen G2 Smart Toilet* for utmost comfort and delight of user while also ensuring hygiene with auto-flush and self-cleansing feature. The toilet is equipped with an integrated dual nozzle bidet focusing water spray on intimate parts during washing. This reduces backsplash and sprinkling of water around the room that is common with the use of bidet spray helping moisture control and prevent puddle that might encourage mold to grow.

A dedicated *90 Degree Safety Grab Bar-RH* is installed to help mobility for elderly and people with disability.



Design Visuals: Basin Area

The uniquely designed Freestanding Vanity Island takes center stage with its sleek sintered stone countertop and black metal floating mirror panel. The vanity is positioned in such a way that they are comfortable to be used sitting down while the *Signature Vessel With Deck* were consciously chosen as to raise the height of the washbasin and improve ergonomics making it suitable to be used standing up.

Acacia Evolution Towel Bar is installed for guests to hang used towel.



Design Visuals: Optional Images/ Information

Showing off the elegant curves and iconic geometric design of *American Standard Signature Collection*.

This collection truly encapsulate American Standard prowess in engineering and design from the smooth and seamless finish of the *Signature Basin Mixer Faucet* to the impossibly thin edge of the *Signature Vessel 550mm With Deck Washbasin*.



Design Visuals: Optional Images/ Information

Seen here, a small family getting ready for a day out-and-about in town with mother touching up her make-up in the vanity counter and father helping the son do his hair in front of the mirror putting on display the versatility of The Freestanding Vanity Island.

The Wooden Towel and Amenity Bench positioned at the bottom of the vanity is moveable and can be used as a stepping stool for people with limited movement should the need arises.



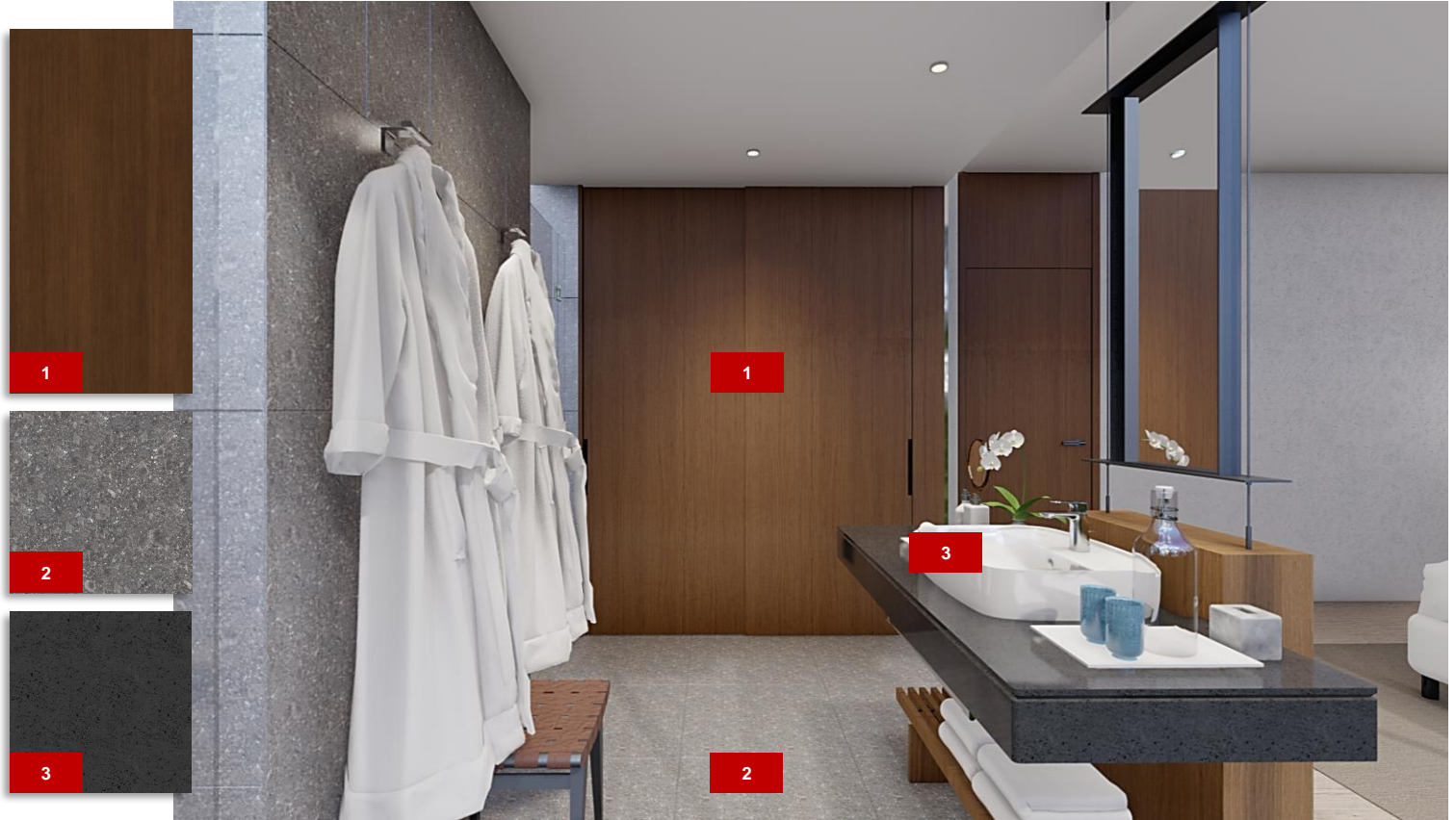
Specifications: Colors, Materials and Finishes

The main palette consisted of 3 different material as follows

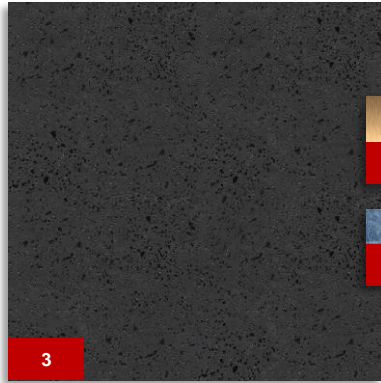
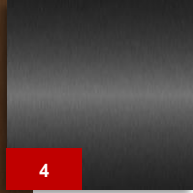
Bornean Ironwood is chosen for its long lasting quality and durability against wear and tear, resistance to bacteria and fungi, and ability to withstand repeated exposure to water.

Natural Basalt Stone surface is highly resistant to scratches and temperature stable making it feel lukewarm to the touch even during dusk. The material also possesses sound dampening quality reducing noise from bathroom use.

Sintered Stone is chosen due to its manufactured nature creating a even finish and high density making it less prone to staining perfect for a highly visible and frequently touched surface like the vanity area.






Specifications: Colors, Materials and Finishes



- 1 Bornean Ironwood
- 2 Natural Basalt Stone
- 3 Black Sintered Stone
- 4 Brushed Metal Black
- 5 Brushed Metal Silver
- 6 Brass Accent
- 7 Blue Stone Accent



American Standard Products Specified

	Product Name	Product Image	Reason for Selection
1	Aerozen G2 Smart Toilet		<i>Aerozen G2 Smart Toilet</i> is chosen for its wide range of features with Dual Nozzles Integrated Bidet, Heated Seat, and Deodorizer for comfort while features like <i>Siphonmax</i> , <i>Comfortclean</i> , and <i>Autoflush</i> ensure hygiene between use.
2	90 Degree Safety Grab Bar-RH		<i>90 Degree Safety Grab Bar-RH</i> is installed to help mobility for elderly and people with disability while using the toilet.
3	Signature Vessel 550m With Deck		<i>Signature Vessel 550m With Deck</i> is installed for the additional elevation that it will provide to the vanity counter setting it on a comfortable height for use while standing up.
4	Signature Basin Mixer Faucet		<i>Signature Basin Mixer Faucet</i> is chosen for its thin and seamless design that blends well with the overall aesthetic of The Freestanding Vanity Island.

Appendix

Design Story – Limit to 150 words per answer.

- What is the inspiration for your design?

The inspiration comes from my desire to elevate the warm and cozy feeling of home bathroom and shatters guest expectation on how a bathroom would look and feel with layout reimagining and purposeful material choice. The design revamped conventional bathroom layout setting forth an original and unexpected bathroom experience yet still feels familiar enough for guest to instinctively know how they can interact with the space.

- How does the design fulfill the need of the target users?

The design main advantage is its versatility. Whether a family, business partners, couple, or individual is staying, the bathroom can easily cater to their needs by giving them the control over what and how they want to interact with parts of the bathroom. For example, a business partners might be more time sensitive and the bathroom easily accommodate this by giving each guest a chance to use the bathroom simultaneously cutting down significantly the time they need to get ready.

- How does the design fulfill the design challenge?

The design incorporates commonly used materials and palette found in a traditional bathroom giving a familiar and comfortable feel but by choosing a high quality version of the materials and combining them in a sophisticated manner, this design provide a posh, modern and stylish feel of a home away from home. Materials such as Bornean Ironwood and Basalt Stone are carefully chosen as to make sure they are easy to clean and durable enough reducing upkeep.

- How does the choice of products contribute to the purpose of the design?

All parts of the bathroom from the vanity to the toilet have specific needs that I use to base my choices on the products. For example, The Signature Vessel 550m With Deck Washbasin installed in the vanity counter is specifically chosen to improve its ergonomics. By combining washbasin and vanity makes it impossible to build the counter all at the same height because both washbasin and vanity requires different height for comfortable use which is solved by the extra elevation given by the Signature Vessel 550m With Deck Washbasin.

as:da

american
standard
design
award

asia
pacific
2024

Let your ideas
change the way we
perceive hospitality
bathroom spaces

American Standard

