

Design Concept Summary

A place to bare all.

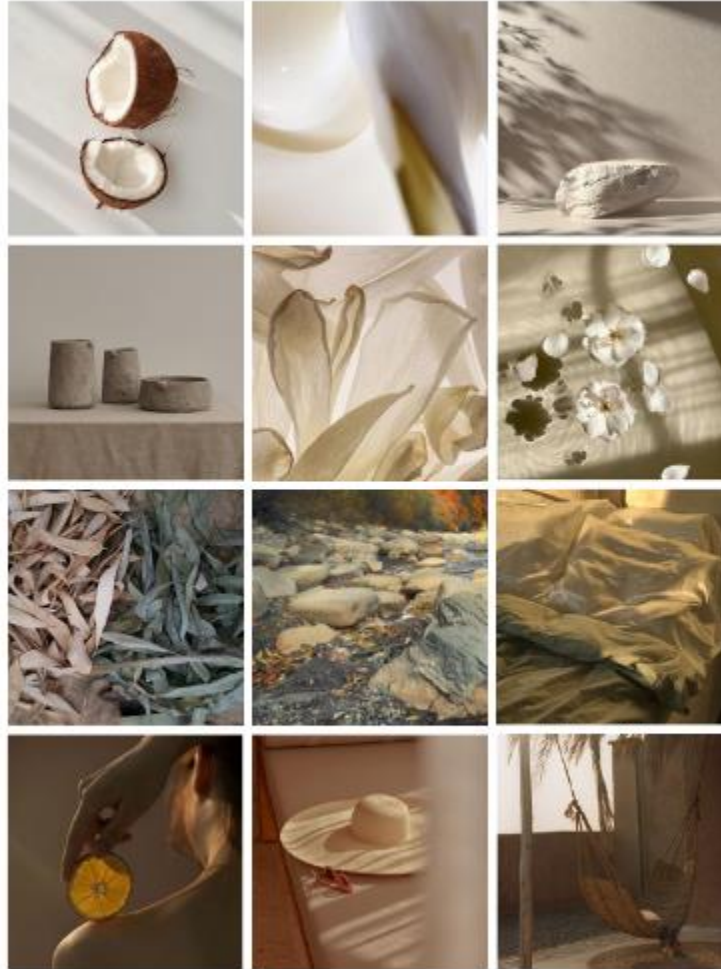
What started as a religious value, a purifying element for both body and soul, to being a significant social development of a source of relaxation and restoration.

A bathroom is a place where you start and end the day. A personal place that helps individuals **rejuvenate**— to feel newly fresh or full of energy.

It rids old, unrelaxing energy and renews vitality.

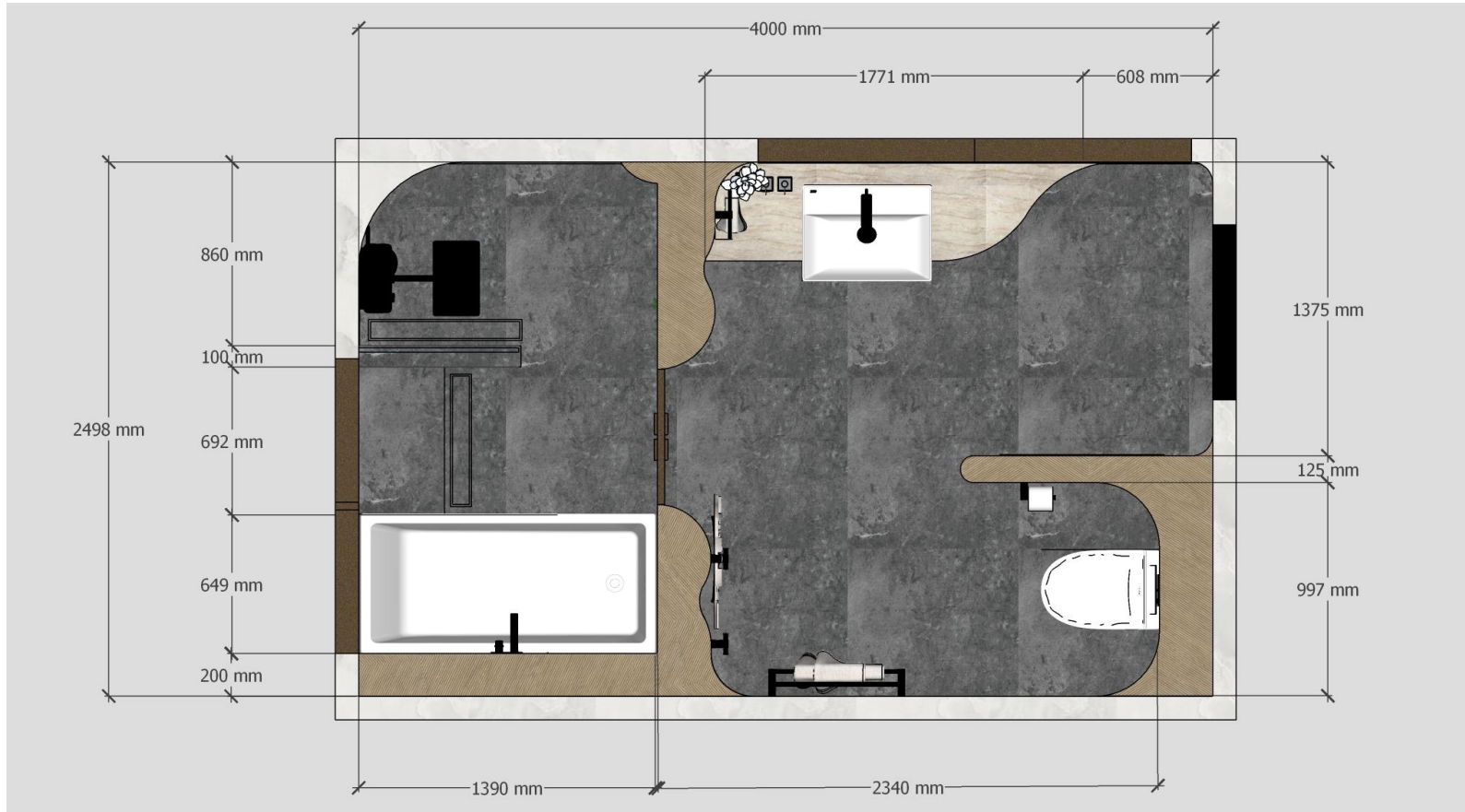
The concept is to create a space that *hones* the energy factor to a bathroom. Despite challenges people face throughout their day, the idea of coming home to *feeling fresh and full of energy* can change the mood and sets the tone that would affect the rest of someone's day.

As a space to feel free and where inspirations are drawn, it is important to feel **rejuvenated** in this sacred place.



Design: Floor Plan and Elevations

THEME:
Hospitality
Bathroom –
Home Away
from Home



Design: Floor Plan and Elevations



Elevation 1



Elevation 2



Elevation 3



Elevation 4

Design Visuals: Full Bathroom

The shower/bath area is the highlight of the room. The double doors creates a separation, an entry to another dimension.

Designed to have a landing space in between the shower and the bathtub, this acts as an area to release all the negative energy before taking a shower/bath – to feel rejuvenated.



Design Visuals: Shower Area

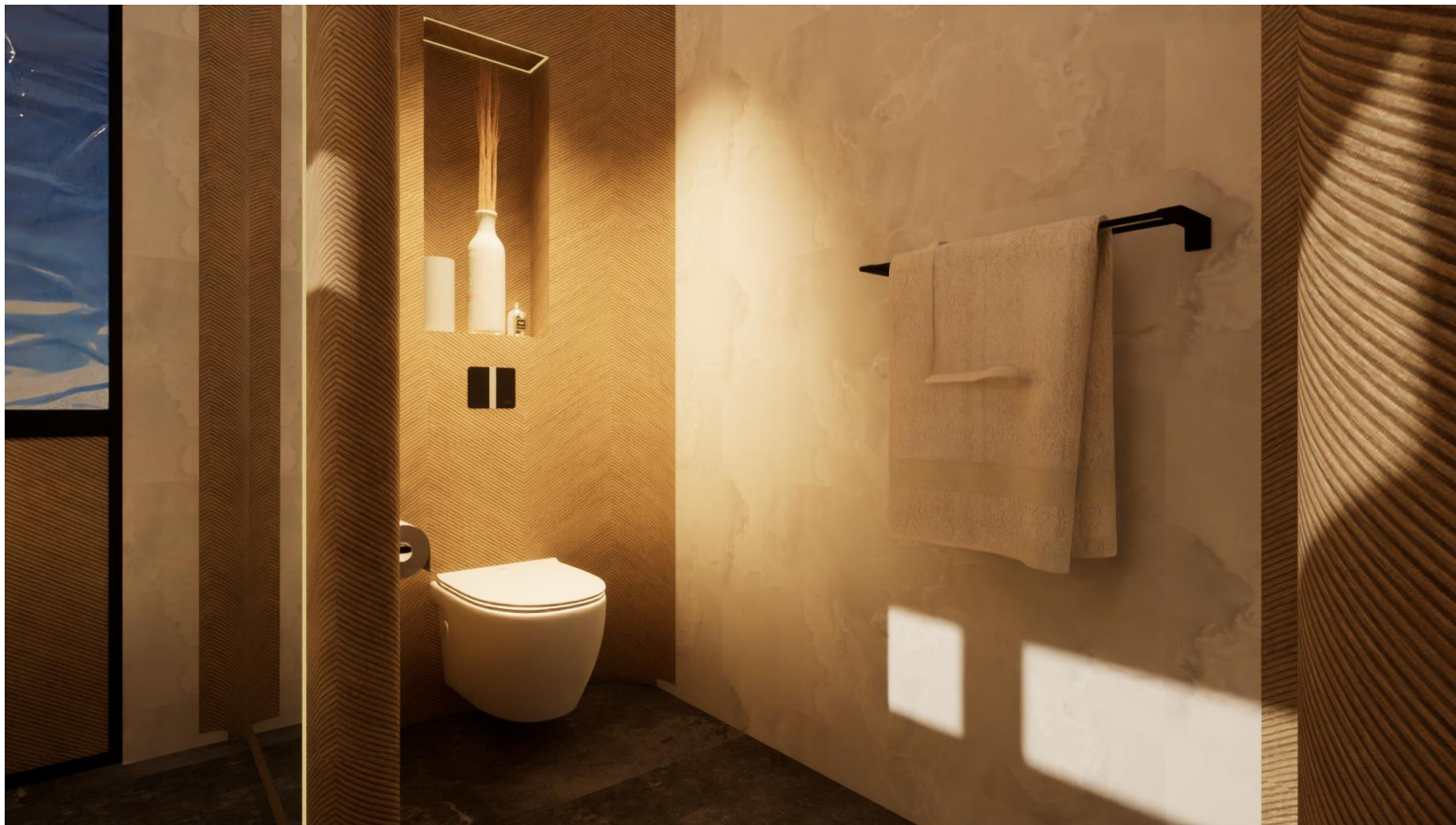
Organic
curved walls
and shelving
to soften the
shower area.



Design Visuals: Toilet Area

A wall to separate the toilet from the vanity and the entrance.

Paying heed to one's privacy creates a sense of sanctuary for individuals.



Design Visuals: Basin Area

Vanity area with an open shelving underneath for easy access.

Organic shaped mirror to soften again the space.



Design Visuals: Optional Images/ Information

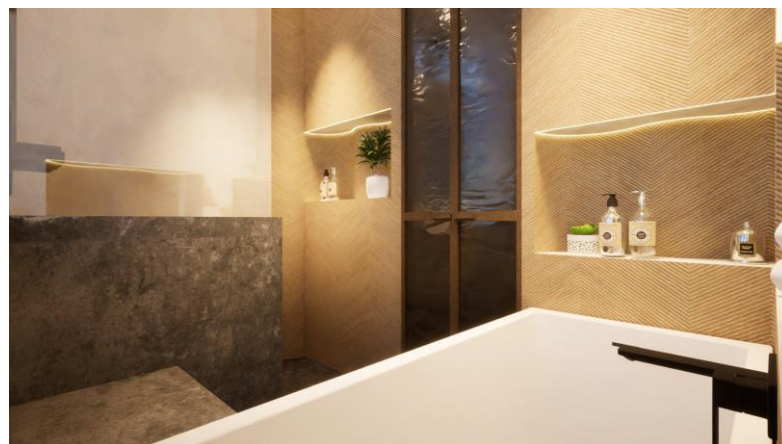
This area creates a nook like feel for individuals taking a bath.

Having the window directly in front of the bathtub, allows guests to enjoy the scenery.



**Design
Visuals:**
Optional
Images/
Information

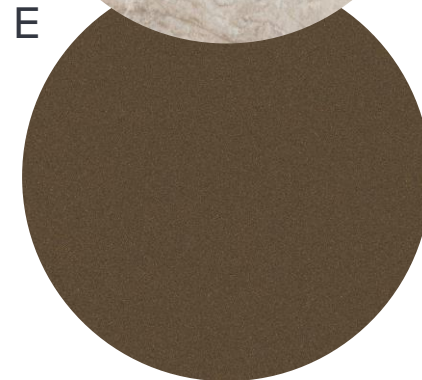
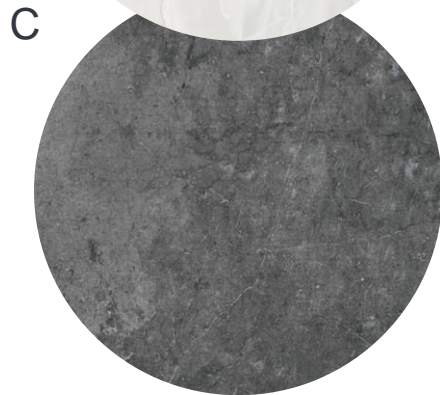
More images
of the
shower/bath
area and the
vanity area.



Specifications: Colors, Materials and Finishes

LEGEND

- A. Coco Tiles and Mosaic Forest Sunrise Series – Forest Rain
- B. Dekton - Helena
- C. Beaumont Tiles – Maximo Black Matt
- D. Dekton – Arga
- E. Dulux – Electro Medium Bronze (Flat)








American Standard Products Specified

Use the space on the right to:

1. Indicate the list of American Standard products used with the template on the right.

1. State the reason for selecting each product and why you believe it addresses the needs of travelers in hospitality bathroom spaces.

You may use more than one slide if required.

	Product Name	Product Image	Reason for Selection
1	Acacia SupaSleek Wall- Hung Toilet		Its sleek design creates a sense of cleanliness especially in the toilet area. This also adds a difference to a traditional looking toilet.
2	Acacia SupaSleek Semi-Counter Basin 50mm Single-Hole		Its rectangular shape balances out the organic curves of the bathroom. However, the soft edges of the basin softens the look of the basin itself as well.
3	Acacia Evolution Basin Mixer (Black)		Same as the basin, its rectangular shape adds a mixture to the design of the bathroom.
4	Acacia Evolution Tissue Holder (Black)		Adds a classic touch to the unique looking of the bathroom.
5	Acacia Evolution Towel Ring (Black)		The mixture of the rectangular shape and the circular edges of the towel ring reflects on the whole design of the bathroom.

American Standard Products Specified

Use the space on the right to:

1. Indicate the list of American Standard products used with the template on the right.

1. State the reason for selecting each product and why you believe it addresses the needs of travelers in hospitality bathroom spaces.

You may use more than one slide if required.

	Product Name	Product Image	Reason for Selection
6	Acacia Evolution Dual Towel Rack (Black)		Adds a classic touch to the hotel bathroom.
7	Acacia Evolution Robe Hook (Black)		Its rectangular shape balances out the organic curves of the bathroom. However, the soft edges softens the look of the hook.
8	Acacia SLM Rough-In + Trim Push Open CN (Black)		Same as the faucet, its rectangular shape adds a mixture to the design of the bathroom.
9	EasySET Exposed Shower Auto Temperature Mixer with Integrated Rain Shower Kit (Black)		You could never go wrong with a classic looking shower. Having unique looking ones together with the unique looking of the bathroom can be too overpowering. So having a classic looking one helps tone down things.
10	Nowadays IN-Wall Sensor Urinal Flush Valve (Black)		Having a sensor urinal flush helps prevent the spread of bacteria especially around the toilet area. This helps promote health safety especially for guest users.

Appendix

Design Story – Limit to 150 words per answer.

- What is the inspiration for your design?

The main inspiration for my design is the idea of a massage/spa place. Upon entering a massage place, they have a certain scent that they use that is very soothing – making you want to relax in that place. Also, the idea of entering a massage place feeling sore and tired and then leaving feeling relaxed, rejuvenated and feeling new again.

- How does the design fulfill the need of the target users?

I feel like the design fulfills the need of the target users through its feel and vibe. As a hotel, you have this certain standard – to make feel guest at home by having a clean vibe upon entering a room and especially a bathroom. And for me, the balance of the neutral colors and its organic curves helps softens the feel of the space making guests feel relaxed and rejuvenated – just as how one would feel when they're at home.

- How does the design fulfill the design challenge?

I believe the design fulfills the design challenge through its simplicity and dedication to cleanliness and purpose of certain areas. The whole bathroom space is easy to navigate. Moreover, having dedicated nooks for each area creates an easy navigation. For example, having a huge space for the shower/bath area and the toilet area eases the use for parents aiding their children or for elderly.

- How does the choice of products contribute to the purpose of the design?

The choice of products contributes by balancing out the whole space because design is not only about the materials and finishes. The use of fixtures affects this as well. It catches the attention of users if one of it looks a bit off. Moreover, choosing products that is easy to use aids with the design as well especially because of the range of user groups. So having products that is simple, makes it convenient for everyone – making individuals happy and included.

as:da

american
standard
design
award

asia
pacific
2024

Let your ideas
change the way we
perceive hospitality
bathroom spaces

American Standard

