

Purposeful Design Transforming the Way We Live

Design Entry Template





Design Entry Template Guidelines

You will find the following slides in this Submission Template with specific titles and requirements for your submission as indicated below. Total number of your submission should not exceed 12 slides, beginning with (Slide 1: Project Name) and ends with (Slide 12: AS Products Specified).

SLIDE 1: **Project Name**

Input a concept title that reflects your idea.

SLIDE 2: **Design Concept**

Describe your concept in a nutshell, keep it within 150 words.
NOTE: You will elaborate more in the Design Story Document.

SLIDE 3: **Design: Floorplan and Elevations**

Organize your drawings to tell your story.

SLIDES 4-9: **Design: Visuals**

Present your concept with your renderings.

- Slide 4: Full Bathroom
- Slide 5: Shower Area
- Slide 6: Toilet Area
- Slide 7: Basin Area
- Slide 8-9: Optional Images

SLIDE 10- 11: **Specifications: Colors, Materials and Finishes**

SLIDE 12: **American Standard Products Specified**

List down the products that are used in your design.

CanningHill Piers

5-Bedroom Premium

ASDA22-50048





Design Concept

This design is rather simple with a design that would suit people of all ages and with bright coloured tiles and finishes that makes the space look larger and because of the light colours not much artificial light is need to light up the whole toilet which makes this toilet more self-sustainable as well.

Describe your concept in a nutshell, keep it within 150 words. You will elaborate more in the Design Story Document.

Design: Floor Plan and Elevations

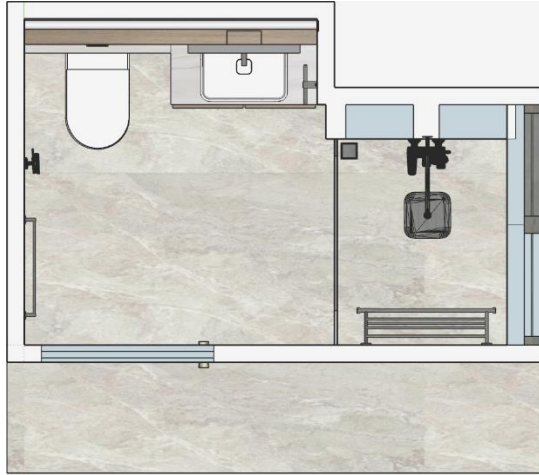
5-BEDROOM PREMIUM

TYPE EP1

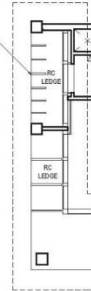
259 sq m / 2788 sq ft

BLK 1
#25-01 to #44-01

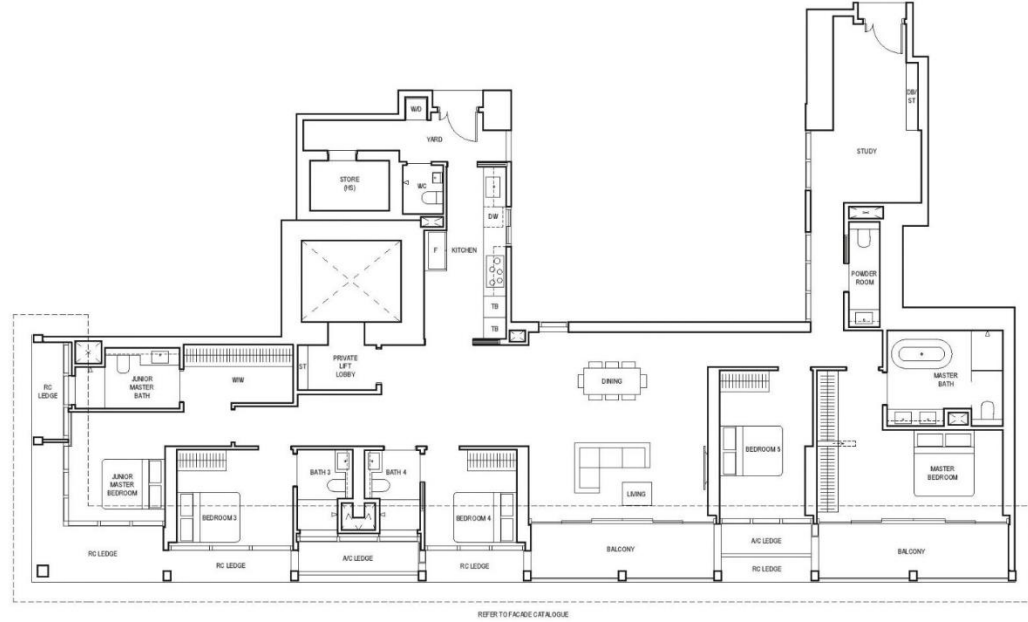
The image on the right is the full floor plan of the 5-bedroom premium condominium. I used the Bathroom 3 for this project and the top layout of the bathroom 3 is shown in the image below.



SECURITY SCREENS
OCCURS FOR UNIT
#40-01 TO #44-01



REFER TO FACADE CATALOGUE



REFER TO FACADE CATALOGUE



LEGEND (WHERE APPLICABLE)

DB Distribution Board WD Washer and Dryer F Fridge DW Dishwasher WW Walk-in Wardrobe
 NC Niche Closet ST Storage HB Handwashed Dishwasher TB Trolley CIE Glass Cabinet

Area includes in-concrete ledge, balcony and void where applicable. Please refer to the legend for orientation. The plans are submitted to change as may be approved by relevant authorities. All floor plans are approximate measurements only and are subject to government survey. The balcony shall not be enclosed unless with the approved enclosure system. For an illustration of the approved balcony system, please refer to the development document 'Formwork 4'.

Design Visuals: Full Bathroom

This is the rendered image of the whole toilet with all the products used and the built-in furniture's made specifically for this design proposal.



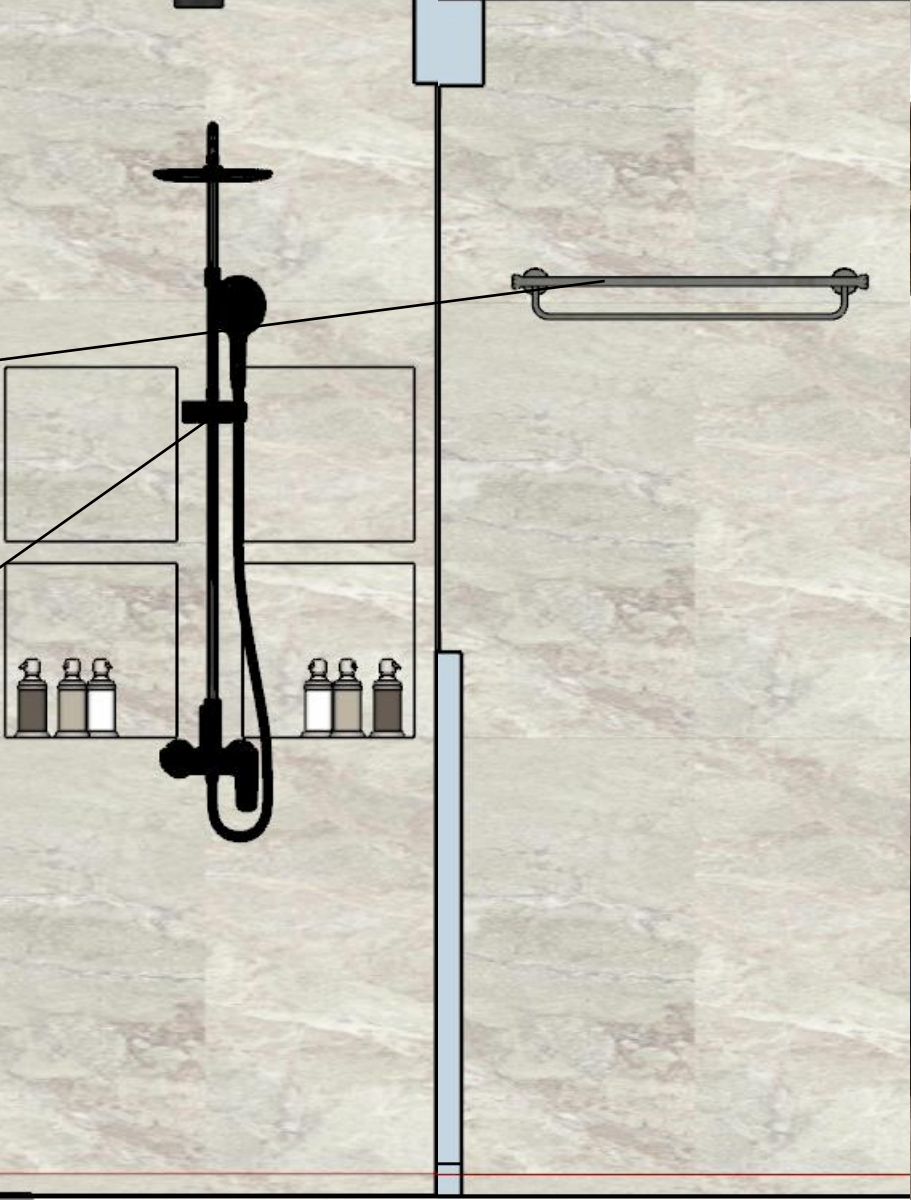
Design Visuals: Shower Area

Concept Round Towel Shelf

Model No.: FFAS1495-908500BC0

Signature Rain Shower System

Model No.: FFAS1772-701500BC0



Design Visuals: Toilet Area

Concept Round Towel Bar

Model No.: FFAS1493-908500BC0

Signature Wall Hung Toilet

Model No.: CCAS3140-3W20400F0 + CCASC119-U20U420C0

Concept Round Paper Holder with Cover

Model No.: FFAS1489-908500BC0



Design Visuals: Basin Area

Acacia Evolution Towel Ring

Model No.: FFAS1390-908500BC0

Acacia Evolution Glass Holder

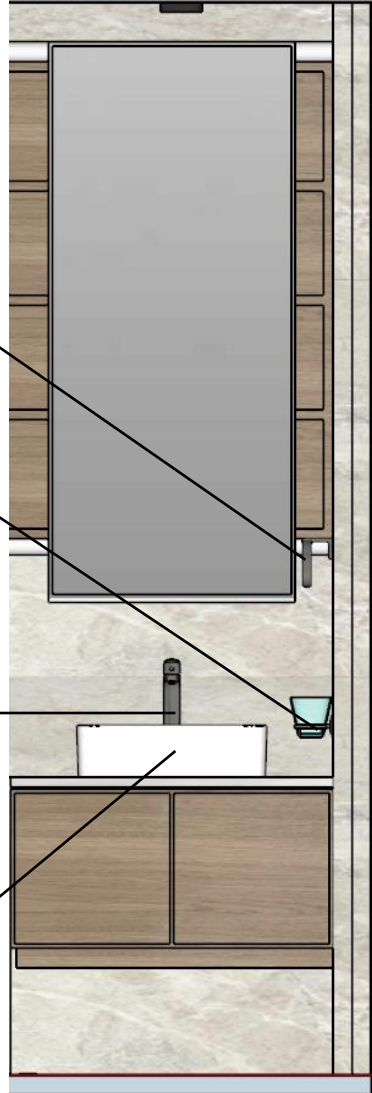
Model No.: FFAS1384-908500BC0

Neo Modern Extended Basin Mixer With Pop-up Drain

Model No.: FFAS0703-101500BF0

Acacia SupaSleek Vessel Wash Basin

Model No.: CCASF412-1000410F0



Design Visuals: Optional Images

These are some extra rendered images from different angles of the toilet. To give better reference of the products and how they are being used in the space how it all fits in coherently. At the same time get to experience the space better with these images.



FRONT ELEVATION

Design Visuals: Optional Images

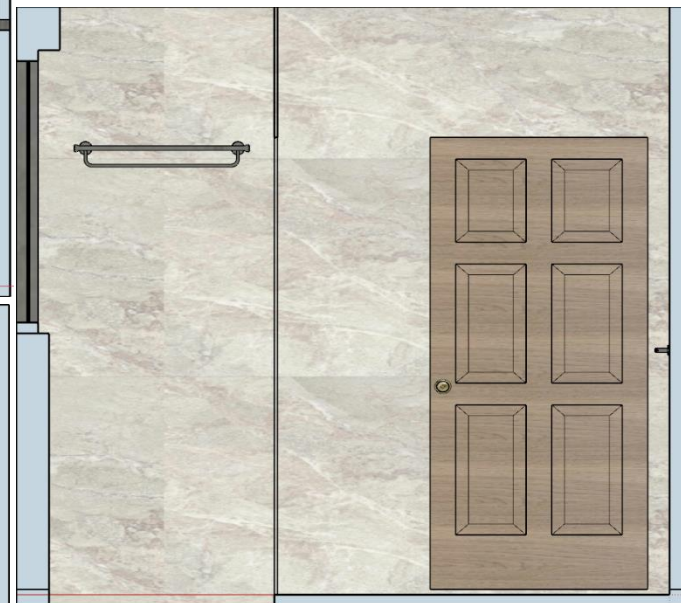
This is the full elevation view of the bathroom, which includes the all the products used.



RIGHT ELEVATION



BACK ELEVATION



Specifications: Colors, Materials and Finishes

ANTOLINI | EXCLUSIVE - MARBLE

Calacatta Covelano

This material was used on the counter top for the vanity counter and the concealed cistern's finish.



ELEMENT CERAMICS | VERDE APLI

ST57802RG

This material was generally used for the whole toilet proposal, it was used for the floors and walls of the toilet.



ENGINEERED OAK OMBRE

309 Latte Macchiato (189)

This engineered wood finish was used on the built-in furniture's and the cabinet system of the vanity counter.



**American
Standard
Products
Specified**



F01	Concept Round Towel Shelf	Model No.: FFAS1495-908500BC0
F02	Signature Rain Shower System	Model No.: FFAS1772-701500BC0
F03	Concept Round Towel Bar	Model No.: FFAS1493-908500BC0
F04	Signature Wall Hung Toilet	Model No.: CCAS3140-3W20400F0 + CCASC119-U20U420C0
F05	Concept Round Paper Holder with Cover	Model No.: FFAS1489-908500BC0



**American
Standard
Products
Specified**

F06	Acacia Evolution Towel Ring	Model No.: FFAS1390-908500BC0
F07	Acacia Evolution Glass Holder	Model No.: FFAS1384-908500BC0
F08	Neo Modern Extended Basin Mixer With Pop-up Drain	Model No.: FFAS0703-101500BF0
F09	Acacia SupaSleek Vessel Wash Basin	Model No.: CCASF412-1000410F0



**May Your Idea
Make a Difference
Good luck!**

