

Purposeful Design Transforming the Way We Live

Design Entry Template

Project name : Mànھ phủ Xanh/Green Blinds

Participant ID: ASDA22-90484





Design Entry Template Guidelines

You will find the following slides in this Submission Template with specific titles and requirements for your submission as indicated below. Total number of your submission should not exceed 12 slides, beginning with (Slide 1: Project Name) and ends with (Slide 12: AS Products Specified).

SLIDE 1: Project Name

Input a concept title that reflects your idea.

SLIDE 2: Design Concept

Describe your concept in a nutshell, keep it within 150 words.
NOTE: You will elaborate more in the Design Story Document.

SLIDE 3: Design: Floorplan and Elevations

Organize your drawings to tell your story.

SLIDES 4-9: Design: Visuals

Present your concept with your renderings.

- Slide 4: Full Bathroom
- Slide 5: Shower Area
- Slide 6: Toilet Area
- Slide 7: Basin Area
- Slide 8-9: Optional Images

SLIDE 10- 11: Specifications: Colors, Materials and Finishes

SLIDE 12: American Standard Products Specified

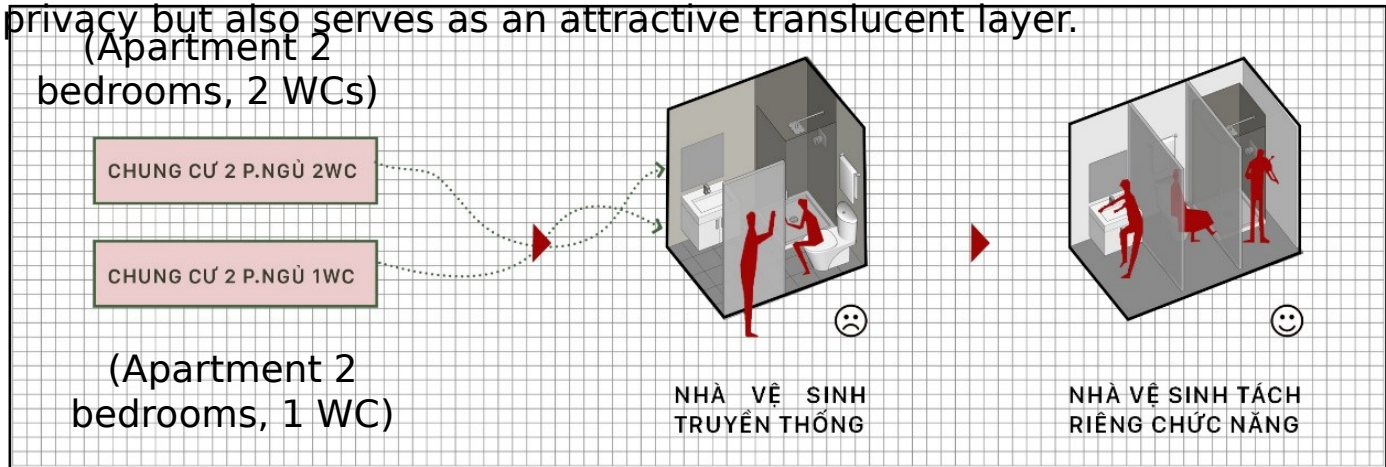
List down the products that are used in your design.

Design Concept

Rapidly rising urbanization is resulting in the apartments' diminished space for function rooms. Each 2-bedroom apartment for 3 to 4 people is now only about 50 square meter.

Smaller apartments mean smaller space for bathroom. Based in the thought that toilet should be hidden in a house, this design will provide an approach as well as solution towards using one toilet in a small area apartment and the appearance will be the highlight.

The design is optimized in its area, separating each basic function, making it all possible to use at the same time. In front curtain provides privacy but also serves as an attractive translucent layer.



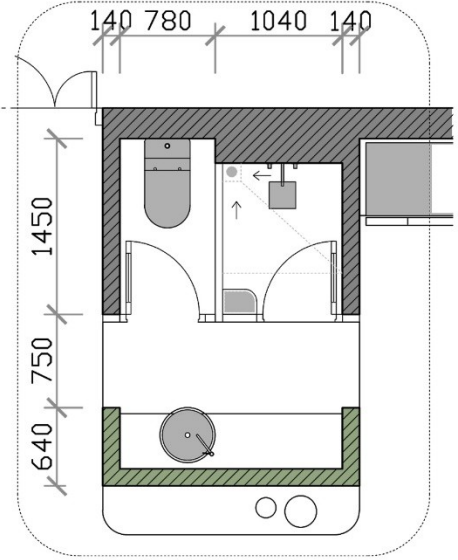
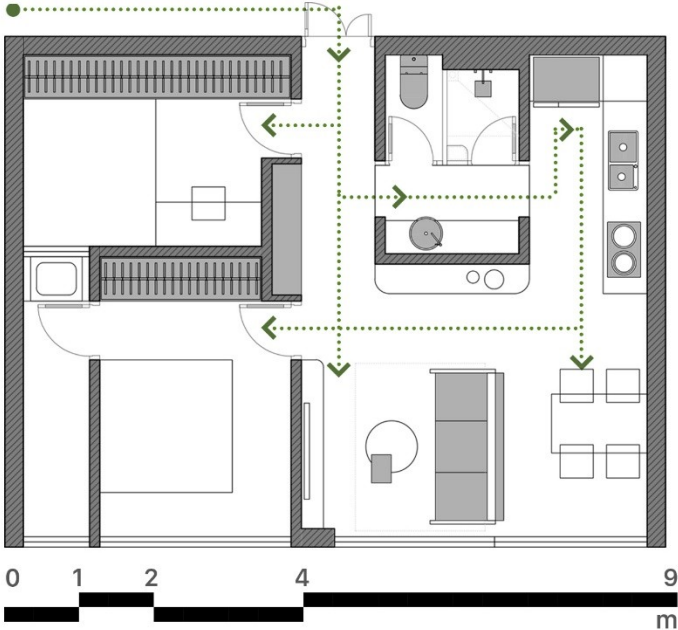
(Apartment 2 bedrooms, 1 WC)

(Traditional bathroom)

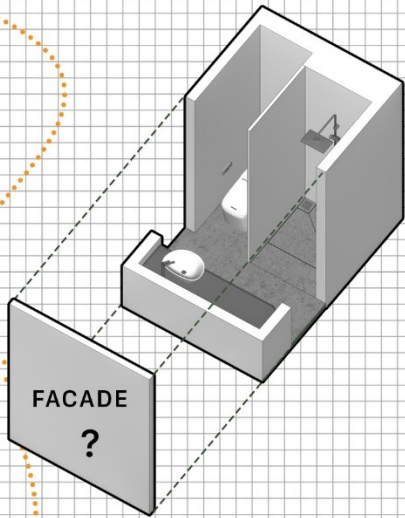
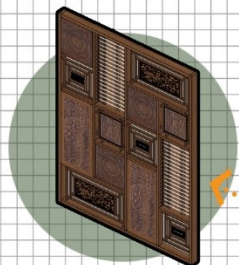
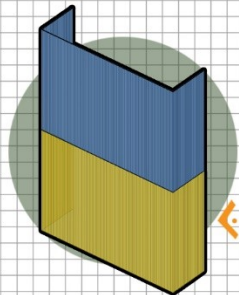
(Bathroom with separated parts)

Design: Floor Plan and Elevations

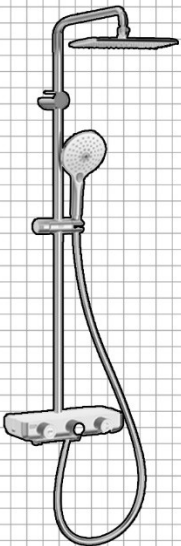
Flow-Line usage



Design: Floor Plan and Elevations



PLAT 4/6L Smart Toilet (Basic)



EasySET Exposed Shower Auto Temperature Mixer with Integrated Rain shower Kit



Neo Modern Vessel Wash Basin



Neo Modern Extended Basin Mixer with Pop-up Drain

Design Visuals: Full Bathroom

The curtain is stylized with an inspirational lacquer painting covering the toilet area.



**Design
Visuals:
Shower
Area**



as:da
american
standard
design
award

asia
pacific
2022

**Design
Visuals:
Toilet
Area**



as:da
american
standard
design
award

asia
pacific
2022

**Design
Visuals:
Basin
Area**



**Design
Visuals:
Optional
Images**



Specifications: Colors, Materials and Finishes

The washbasin table is made of bending steel with electrostatically red paint. Use red as a contrasting color to highlight the overall green of the concepts. The concrete part shows a contrasting arc with the finished white wall paint.



Specifications: Colors, Materials and Finishes



The glass frame covering like a curtain is made of green striped glass, reinforced above and below by an iron frame system. The curtain is both transparent and shielding.

The door and frame cover are made of plastic, covered with glass, the door frames are molded, to keep the overall neat, clean and detailed. The external door handles have the shapes of the toilet and bathroom for the distinction.



American Standard

Sản phẩm Ứng dụng



PLAT 4/6L Smart Toilet (Basic)



EasySET Exposed Shower Auto Temperature Mixer with Integrated Rain shower Kit



Neo Modern Vessel Wash Basin



Neo Modern Extended Basin Mixer with Pop-up Drain



**May Your Idea
Make a Difference
Good luck!**

