

Purposeful Design Transforming the Way We Live

Design Entry Template





Design Entry Template Guidelines

You will find the following slides in this Submission Template with specific titles and requirements for your submission as indicated below. Total number of your submission should not exceed 12 slides, beginning with (Slide 1: Project Name) and ends with (Slide 12: AS Products Specified).

SLIDE 1: **Project Name**

Input a concept title that reflects your idea.

SLIDE 2: **Design Concept**

Describe your concept in a nutshell, keep it within 150 words.
NOTE: You will elaborate more in the Design Story Document.

SLIDE 3: **Design: Floorplan and Elevations**

Organize your drawings to tell your story.

SLIDES 4-9: **Design: Visuals**

Present your concept with your renderings.

- Slide 4: Full Bathroom
- Slide 5: Shower Area
- Slide 6: Toilet Area
- Slide 7: Basin Area
- Slide 8-9: Optional Images

SLIDE 10- 11: **Specifications: Colors, Materials and Finishes**

SLIDE 12: **American Standard Products Specified**

List down the products that are used in your design.

Hospitality Bathroom Design Boutique Resort Bathroom ASDA22-80457



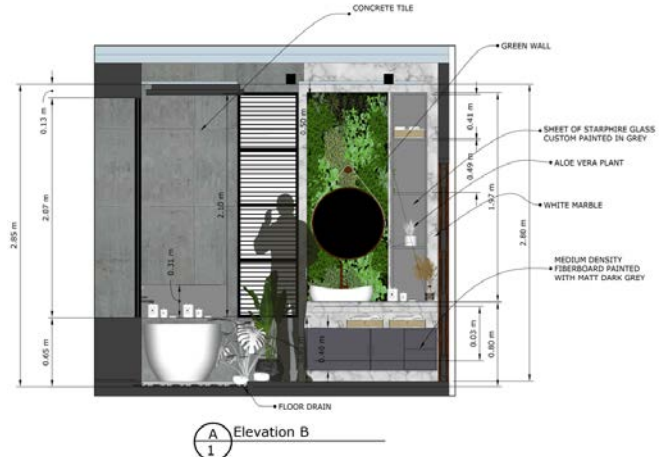
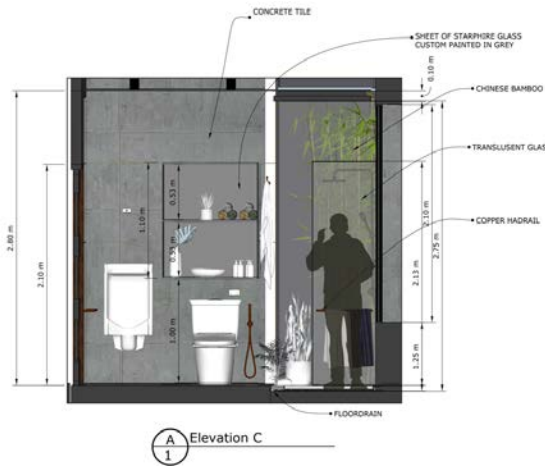
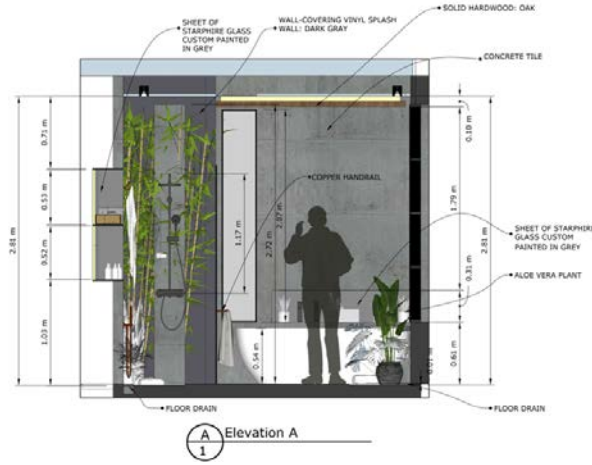


Design Concept

The bathroom is one of the most important spaces in a home that has an impact on the user's daily life, but what if the design does not appeal to them? It may cause the user to behave in an unsanitary manner, thus impacting his or her physical and mental health. Poor designing may lead to this effect, to avoid this effect, the designer employs contemporary tropical architecture to give sustainable design which delivers the benefit to both to the user and to the building's identity. Elements of current architecture such as optimizing the spaces, offering natural ventilation, simplicity of the design enables the user to not be feeling cramped which will lead them to relaxation. Our users target are the travelers, contemporary architecture serves as a key for offering them relaxation and free from weariness. Tropical architecture on the other side is used of the design concept is to gives not only the material utilized, but also to offer uniqueness of the area, and gives connection to the user.

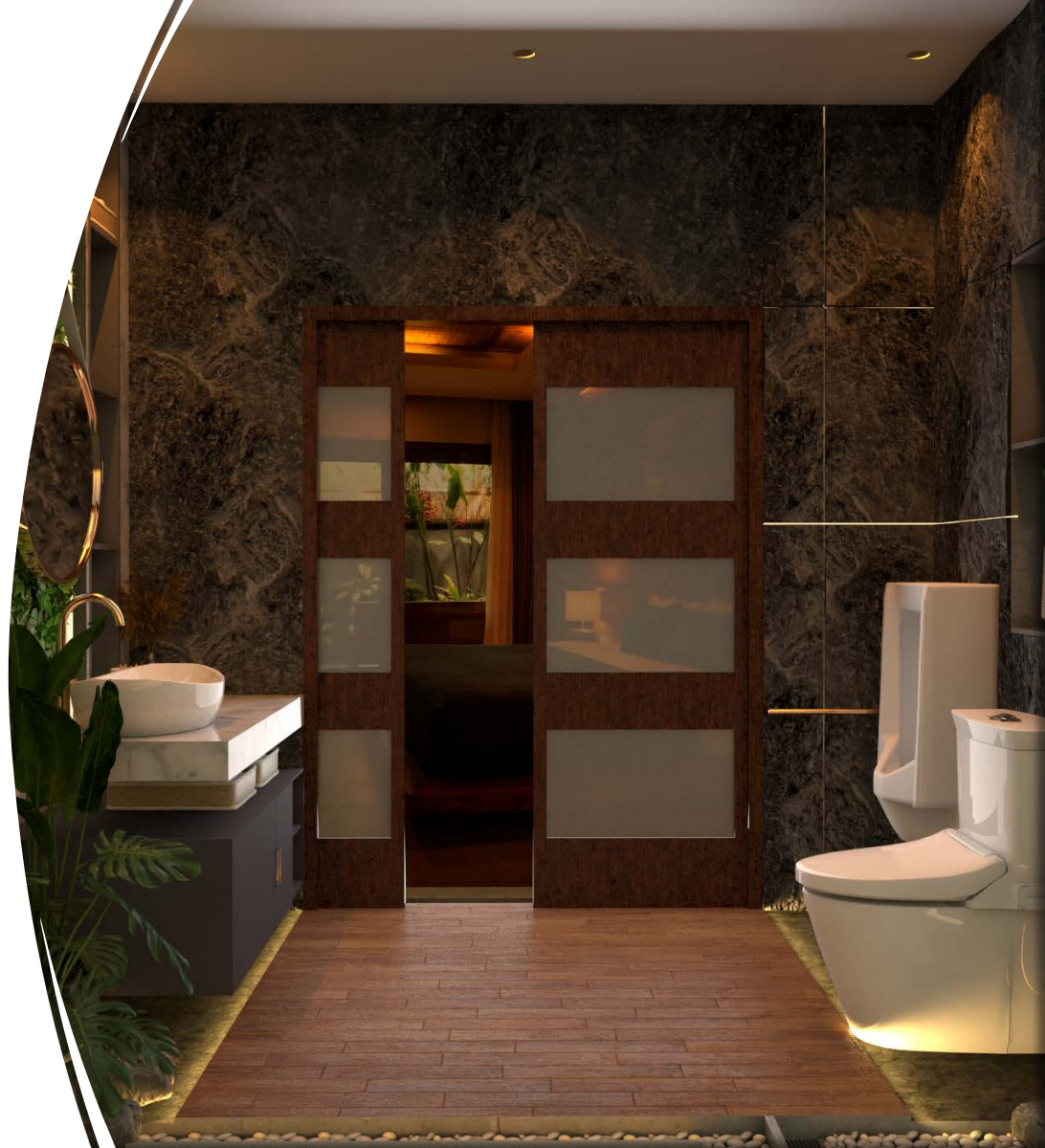
Design: Floor Plan and Elevations

The bathroom is designed to make the user's life easier while using it; the idea is to position the areas in such a way that the circulation flows more freely. Having a lavatory, urinal, and toilet next to the entry point makes it easier for the user in an emergency. Wet areas, such as the shower and bath, are placed towards the end of the plan to provide seclusion and prevent water from seeping onto the hotel unit when taking a bath. Natural ventilation is also offered in the bathroom to promote a link between the user and the environment, as well as green tropical plants and natural sunlight for sanitation, greenhouse impact reduction, and air purification.



Design Visuals: Full Bathroom

A bathroom is an important room in any home where it provides a fundamental sanitary role as well as a place to essentially relax by taking a bath or shower and getting ready, and the design for all intents and purposes was created to for the most part provide these hygienic functions while also providing a sense of beauty in pretty such a space.



Design Visuals: Shower Area

The elegance of the design is enhanced by the presence of a window near the shower and bath areas. The area is ventilated and sanitary as a result of the welcoming natural light. Placing plants beside the shower and bath helps to water the plants as well and to give nature effect when having shower. In order to preserve undesired trashes that inadvertently fell down such as hairs, pebbles aids them trap to avoiding the trashes flow to the drain permitting with the water. Water from drain may also be used for flushing toilets after proceeding to filter.



Design Visuals: Basin Area

If possible, a bathroom lighting design should include a mix of task lighting, ambient lighting, and natural light. Natural sunlight is extremely hygienic, as it kills microorganisms that have been left on the bathroom floor. During the day, natural sunlight provides illumination, making the architecture more sustainable. Green walls also help the design more sustainable because it also help to reduce greenhouse effect to the bathroom. The basin area is one of the sanitary areas in a bathroom where users regularly go, thus the designer placed it near the entry point to make the user's mobility easier.



Design Visuals: Toilet Area

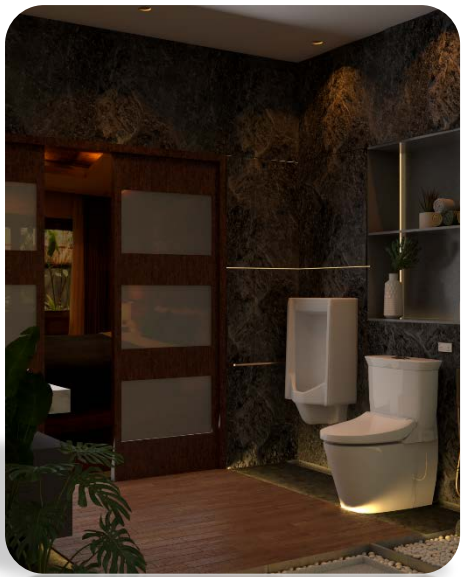
Providing particularly natural effect also generally helps to essentially bring the nature to the user and gives generally calm and relaxing breeze to the mind of the user in a particularly major way. To achieve this appearance in the restroom area, the designer employs natural stones such as slate stone. Toilets are also close to the door to make it easier for users, particularly those with disabilities. It's also close to the basin to make it easy for users to move about. The toilet area's floors are partly elevated to prevent water from spilling into the rest of the bathroom.



**Design
Visuals:
Optional
Images**



**Design
Visuals:
Optional
Images**



Specifications: Colors, Materials and Finishes

Providing green plants to the space helps to reduce carbon footprint or the green house effect. Bamboo plant, Snake plant, Aloe Vera, Areca plant, Monstera plant are some tropical plants that used on the design which provide purifying factor to the bathroom. These plants are known for their capability of removing toxins and providing oxygen which gives great humidifier to the user.

In consideration of today's issue, copper as a materials in some parts such as doorknobs, handles, faucet, bidet, handrail, and towel bar were chosen since it was revealed to have an oligodynamic effect, which allows them to disinfect themselves of germs within eight hours, preventing virus transmission within the area.



SNAKE PLANT

ARECA PLANT

ALOE VERA

ARECACEAE PLANT
LEAF PALM BRANCH



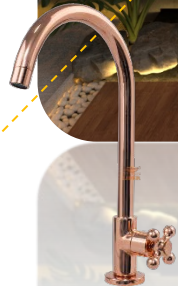
COPPER HANDLE:



COPPER: BIDET



COPPER



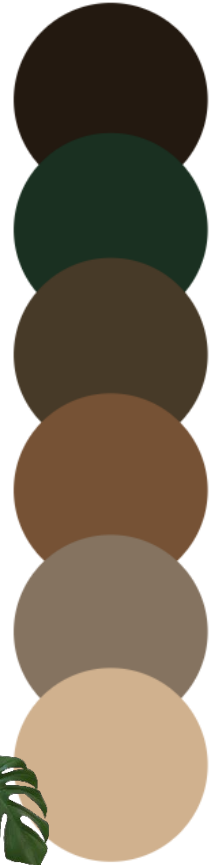
COPPER FAUCET



WHITE PEBBLES



MONSTERA PLANT



Specifications: Colors, Materials and Finishes



METAL BLACK



SHEET OF STARPHIRE GLASS
CONTUMED PAINTED IN GREY



GREEN WALL



WHITE MARBLE



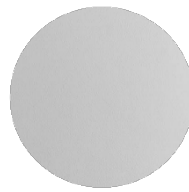
SLATE STONE DARK GREY



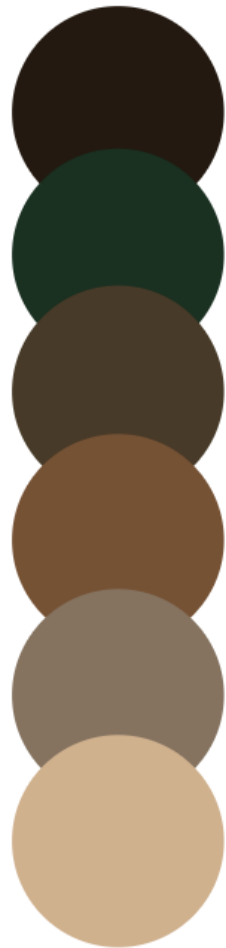
CONCRETE TILE



SOLID HARDWOOD:
OAKWOOD



WHITE MATTE SHEEN
PAINT



**American
Standard
Products
Specified**



ACACIA EVOLUTION EXTENDED
BASIN MIXER WITH POPUP DRAIN
FFAS1302-101500BF0



AMERICAN-STANDARD-CL20075-
6DACTCBT-TOILET



BASIN: SIGNATURE VESSEL
CCAS0628-0000410F0



AMERICAN-STANDARD-FFAS4952-
601500BC0-RAIN-SHOWER



AMERICAN-STANDARD-BTAS9761-
BATHUB



AMERICAN-STANDARD-CL6401U-
6DACTUS-URINAL

**May Your Idea
Make a Difference
Good luck!**

