

# Purposeful Design Transforming the Way We Live

## Design Entry Template





# Design Entry Template Guidelines

You will find the following slides in this Submission Template with specific titles and requirements for your submission as indicated below. Total number of your submission should not exceed 12 slides, beginning with (Slide 1: Project Name) and ends with (Slide 12: AS Products Specified).

## **SLIDE 1:** **Project Name**

Input a concept title that reflects your idea.

## **SLIDE 2:** **Design Concept**

Describe your concept in a nutshell, keep it within 150 words.  
NOTE: You will elaborate more in the Design Story Document.

## **SLIDE 3:** **Design: Floorplan and Elevations**

Organize your drawings to tell your story.

## **SLIDES 4-9:** **Design: Visuals**

Present your concept with your renderings.

- Slide 4: Full Bathroom
- Slide 5: Shower Area
- Slide 6: Toilet Area
- Slide 7: Basin Area
- Slide 8-9: Optional Images

## **SLIDE 10- 11:** **Specifications: Colors, Materials and Finishes**

## **SLIDE 12:** **American Standard Products Specified**

List down the products that are used in your design.

# **SIMOY**

## **Utilizing Sea Breeze for Bathroom of Stilt Villas**

### **ASDA22-80114**





## Design Concept

**SIMOY** provides a contemporary take on a culture-based solution to relevant bathroom challenges we experience in these difficult times.

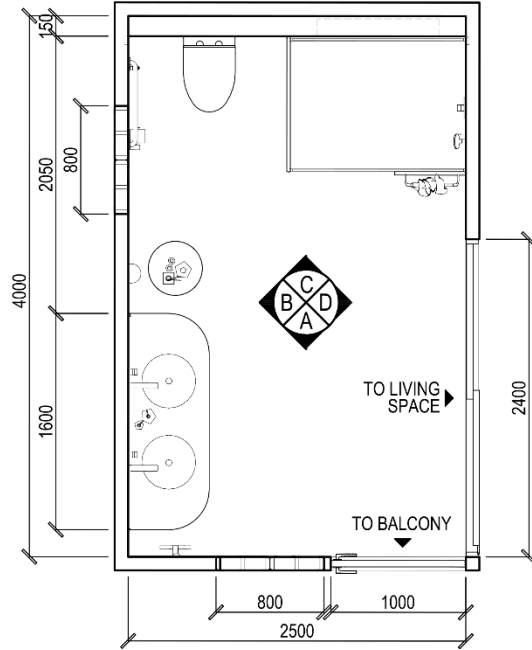
By utilizing the sea breeze in the shores of Culion Islands in Palawan, **SIMOY** is experienced as a comforting gust of wind that provides not just solace, but also solutions to sanitize a bathroom space.

Through the balance of science, culture and interior design, **SIMOY** is a bathroom that will foster good hygiene and stimulate worry-free comfort for any guests, making their stay worthwhile in the new normal.

# Design: Floor Plan and Elevations

The 10 sqm bathroom space could has access to two different areas of the villa, namely the living space and the balcony.

The floor plan highly considers the existing architectural limitations of the Sirakan Villas in the Sunlight Hotel & Resorts in Culion Island, Palawan, on which it was based on.



**A** BATHROOM PLAN  
SIRAKAN VILLA  
NOT TO SCALE



ELEVATION A



ELEVATION B



ELEVATION C



ELEVATION D

# Design Visuals: Full Bathroom

An unobstructed view of the whole bathroom, with an extended view for the balcony.

This open plan provides a smooth airflow of the sea breeze coming from the Sulu Sea, and at the same time allow natural light to reach even the shower area during daytime.



## Design Visuals: Shower Area

The shower area with its fluted glass walls allow sunlight to pass through but still with the privacy for the user.

The area also has linear drains both on the entrance and its farthest wall for accessibility and safety reasons to persons with disability and the elderly. In this way, water could still be drained but without compromising their safety.

A hand shower from American Standard is also accessible in the shower area.



**Design  
Visuals:  
Toilet  
Area**





## Design Visuals: Basin Area

Wall-mounted counter minimizes surfaces which could be exposed to bacteria and viruses.

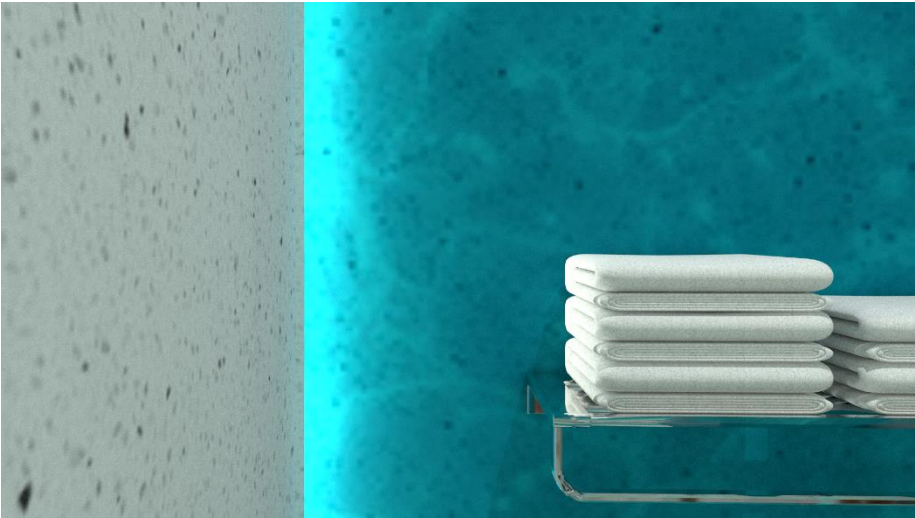
The sea breeze coming from the sea also dries the bathroom naturally, preventing the growth of bacteria and viruses.

The undermount sink is also utilized to make the counter surface easier to clean.



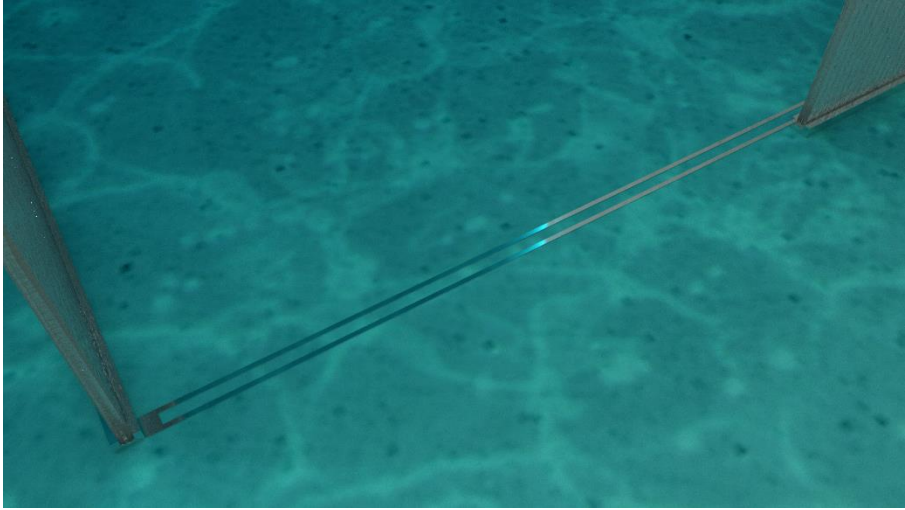
# Design Visuals: Optional Images

Wall lightings could also be changed to UVC mode, which could help deep clean the bathroom once guests check out on their accommodation.



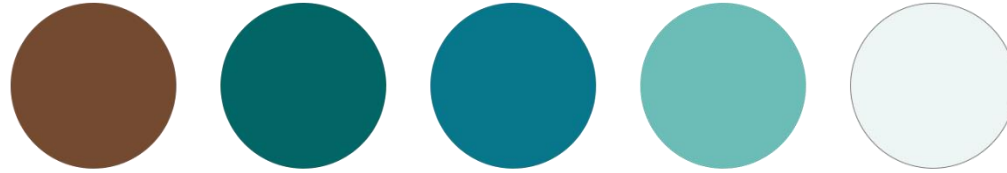
# Design Visuals: Optional Images

The epoxy resin floor has skid-resistant finish and anti-slip coatings to make it non-slippery and safe for the bathroom users to use even when wet.



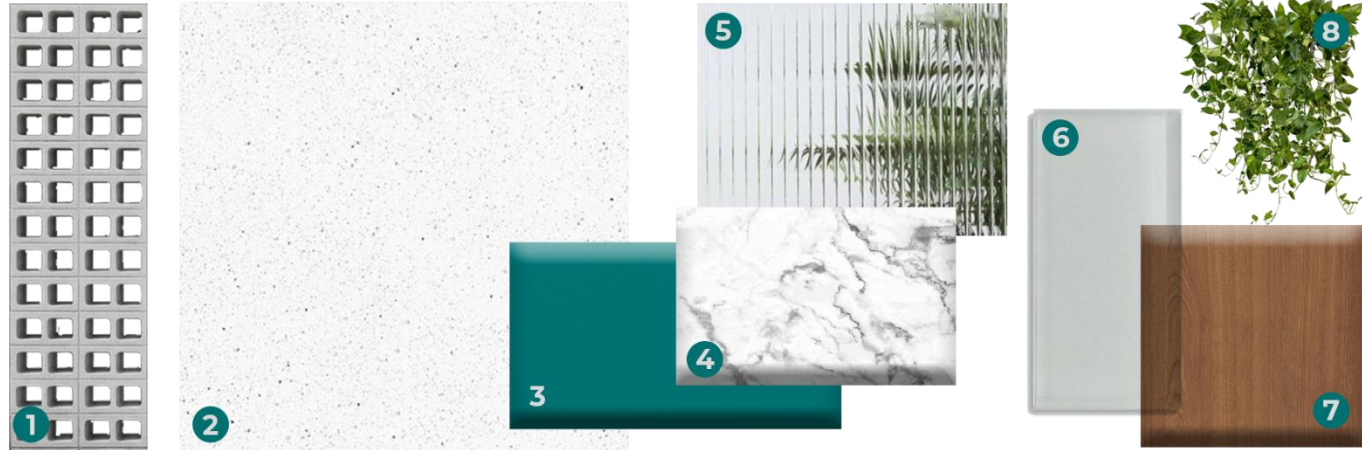
# Specifications: Colors, Materials and Finishes

## COLOR SCHEME



## MATERIALS

1. 390x90x100 Breeze Blocks
2. Epoxy Terrazzo
3. Teal Matte Finish High Pressure Laminate
4. Cast Marble
5. 6mm thk Fluted Glass
6. 10mm thk Tempered Glass
7. Wood Door
8. Hanging English Ivy
9. Epoxy Resin Flooring with Skid-Resistant Finish and Anti-Slip Coatings
10. Custom-made Waterproof Wallpaper



# Specifications: Colors, Materials and Finishes

Use this text box for description,  
if required.

Use Space on the right to show  
colors, materials and finishes.

# American Standard Products Specified

1. Acacia Evolution Robe Hook  
FFAS1381-908500BC0
2. Acacia Evolution Wall-Mount Basin Mixer FFAS1304-101500BF0
3. Acacia Evolution Towel Ring  
FFAS1390-908500BF0
4. Acacia Evolution Towel Shelf  
FFAS1395-908500BF0
5. Acacia Evolution Tissue Holder  
FFAS1387-908500BC0
6. Acacia SupaSleek Wall-Hung Toilet CL31197-6DACTPTB
7. 250mm Round Air-in Showerhead FFAS036-000500BC0
8. 5-Function Air-in Hand Shower  
FFAS9H10-000500BC0
9. Wall Outlet With Holder - Square(G1/2") FFAS9143-000500BC0
10. EasySET for Head Shower  
FFAS0926-709500BC0
11. EasySET for Hand Shower (water Level Adjuster)  
FFAS0925-709500BC0
12. EasySET Concealed Thermostatic Mixer with Trim  
FFAS0930-000500BC0

## BASIN AREA



## TOILET AREA



## SHOWER AREA



**May Your Idea  
Make a Difference  
Good luck!**

