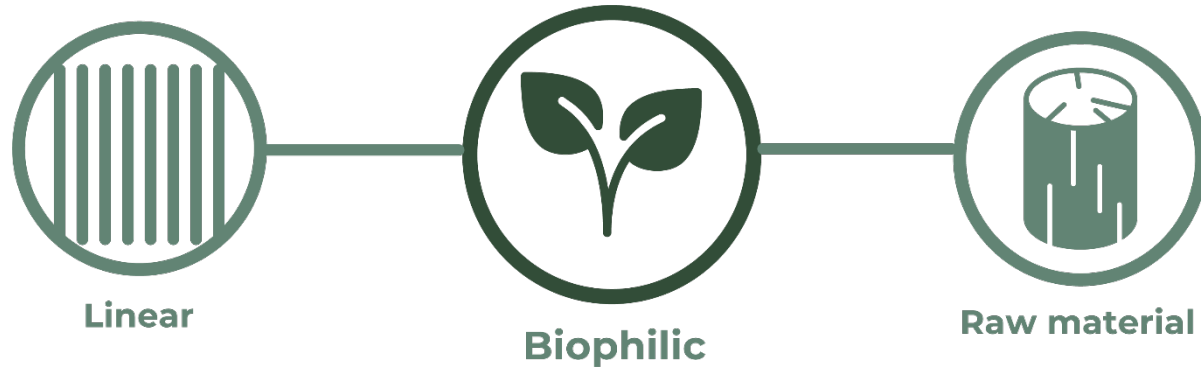


Nature in Modern Hospitality bathroom design **ASDA22-50022**





Design Concept



Nature is the greatest gift from the earth. Spending time in nature stabilizes the mind and body and invigorates them. But after COVID-19, people spent more time inside their houses, resulting in losing time with nature. The 'Nature in Modern Bathroom Project' is designed to allow guests to relax in nature without going outside. Only raw materials were used to emphasize naturalness, and linear designs were used to symbolize the strength and vitality of tall trees. In addition, different materials and tones are applied between the shower space and the toilet & basin area to increase the intuition of the room and give it a modern feeling.

Design: Floor Plan and Elevations

The left is the floorplan of the Nature in Modern Project. It is 4 meters wide, 2.5 meters long, and 10 sqm in total, and 2.8 meters high.

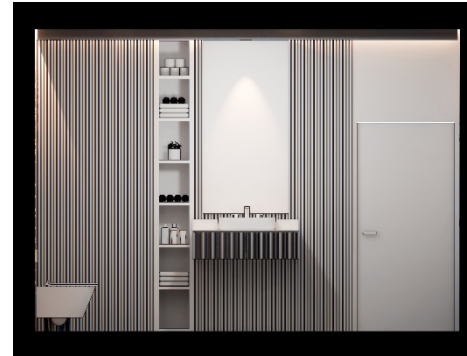
The basin area & toilet area at the entrance was applied with glass paneling and a linear design symbolizing the tree's age frame.



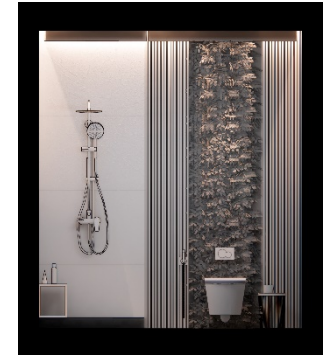
Floorplan



Elevation 1 – Bath & Shower area



Elevation 2 – Basin area



Elevation 3 – Shower & Toilet area

**Design
Visuals:
Full
Bathroom**



Design Visuals: Shower Area

This is Bath & Shower space. It is featured by a large window. In addition, gray marble tiles are used throughout the space to give a modern and calm feeling. Two recessed lights and brown hidden light that gives a subtle atmosphere were used.



Design Visuals: Toilet Area

This is a toilet space. It is located next to the shower space, and a straight wood plank is mainly used, and the green and brown color scheme gives a warm feeling.



Design Visuals: Basin Area

This is a basin area. It is located right next to the left entrance. Linear design was mainly used around vanity located in the middle, and it gives a sense of unity to the space. Along with the recessed light at the ceiling, the hidden light used at the edge of the mirror and the corner of the wall creates a calm atmosphere.



Design Visuals: Optional Images

This is a bathtub specially customized for the concept of the project. The size is 1800x800.

The gray marble used throughout the shower space was applied to form a sense of unity. The vertical design applied to the side of the bathtub gives a raw texture and a modern feeling at the same time.

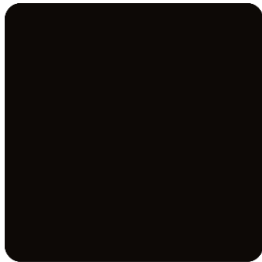
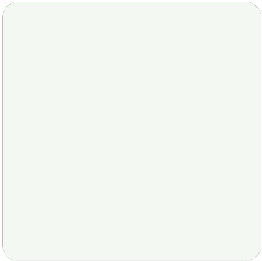
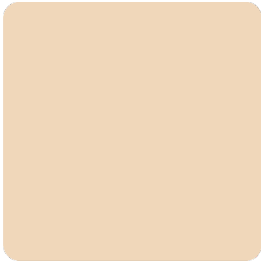


Design Visuals: Optional Images

This vanity was specially produced for the project. Grey marble used in the shower area is used, and like Bathtub, vertical design is applied and gives a modern feel. Vanity shows its own spacious storage space with two cabinets on the front.



**Specifications:
Colors,
Materials and
Finishes**



Specifications: Colors, Materials and Finishes



Maple wood



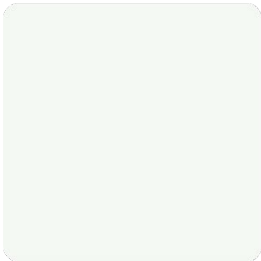
Cherry wood



Plant



Transparent glass panel



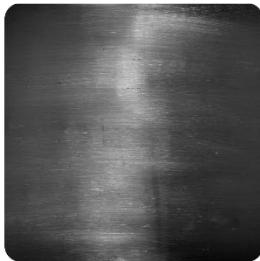
White ceramic tile



Grey marble tile





Stainless steel



Aluminum

**American
Standard
Products
Specified**

			
<p>Exposed Bath & Shower Mixer With Rainshower Kit FFAS1772-701500BC0</p>	<p>3-Hole Basin Mixer With Pop-Up Drain FFAS1703-1015L0BC0</p>	<p>Vessel with Deck (3-Hole) L430 x W550 x H125mm CCAS0618-1080410F0</p>	<p>Wall-Hung Toilet L550 x W382 x H290mm CCAS2140-0220400F0</p>