

Bathfluence : Bathroom Therapy

ASDA22-30156

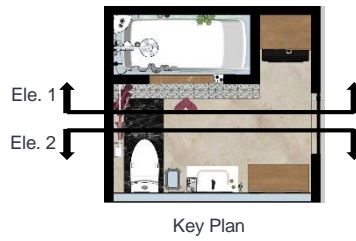




Design Concept

Parents are non stop working machines. After having children one barely gets the peace and time they deserve. Taking time away from the family is not always possible, but also one must not miss out on the oh so essential *me time*. What if I told you there is a place which could be a getaway for you on a daily basis, and oh of course it is in the vicinity of your own home – A sanitarium type bathroom to unwind and relax at the end of each day, your own personal therapy room. A bathroom - a space where one attends to themselves individually. Hence, we can mold this area in such a way that the particular individual can tend to themselves and calm their bodies after a lethargic day or work at home and in the office as well, and finally reach some mental peace.

Design: Floor Plan and Elevations

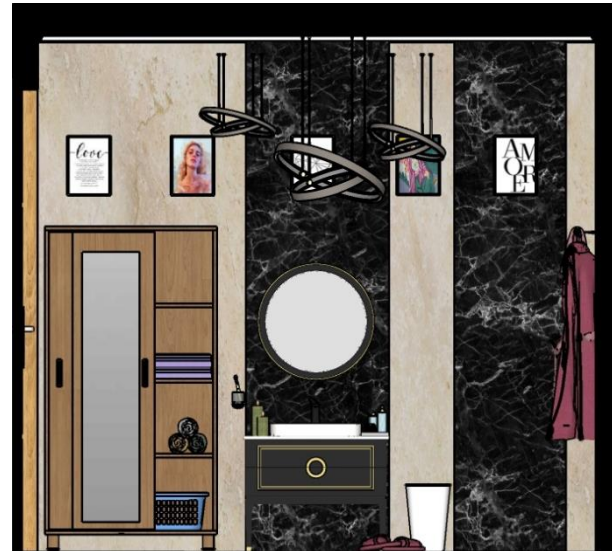
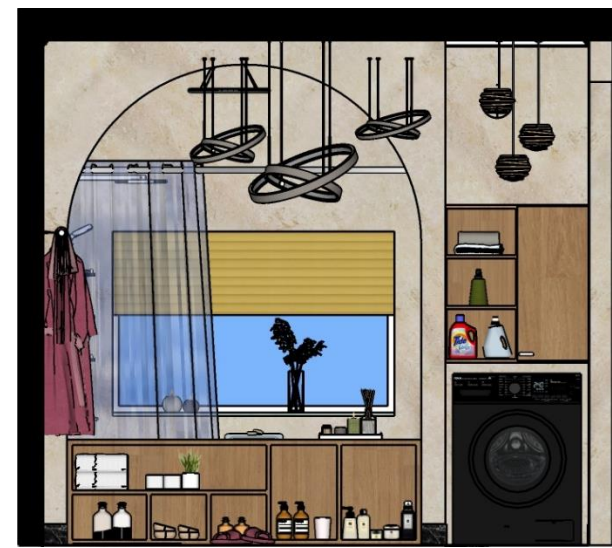


The image on the right shows the plan (6 sq. m) of the residential toilet.

The bathroom was planned to accommodate the needful yet keep the compact space spacious and the circulation easy.

Elevation 1 – shows the bathtub and laundry area

Elevation 2 – shows the washbasin, wc and storage area of the bathroom.



**Design
Visuals:
Full
Bathroom**

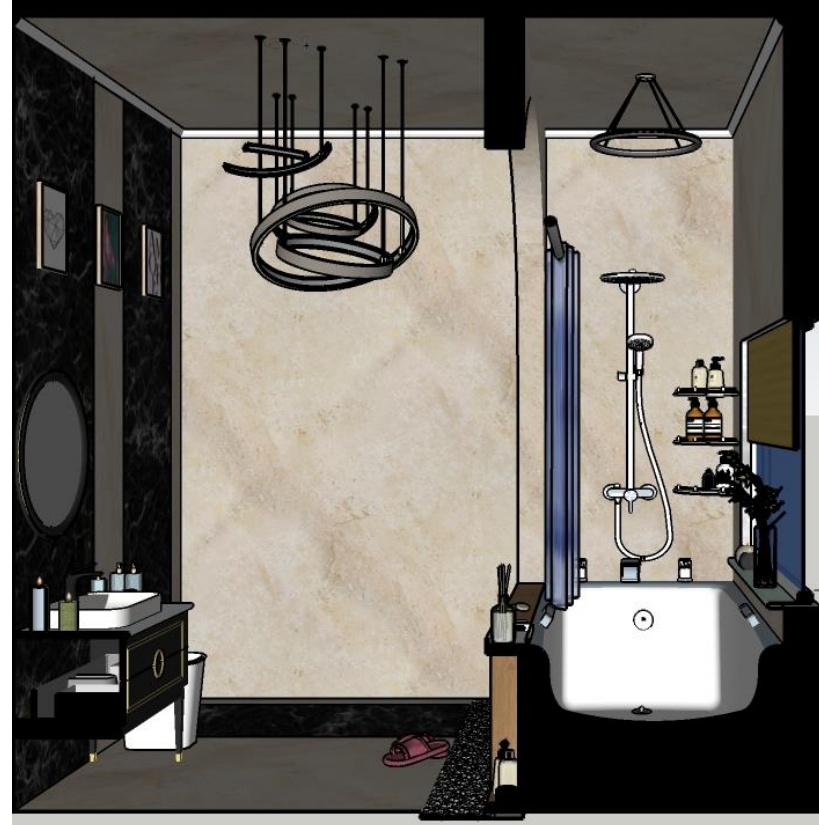
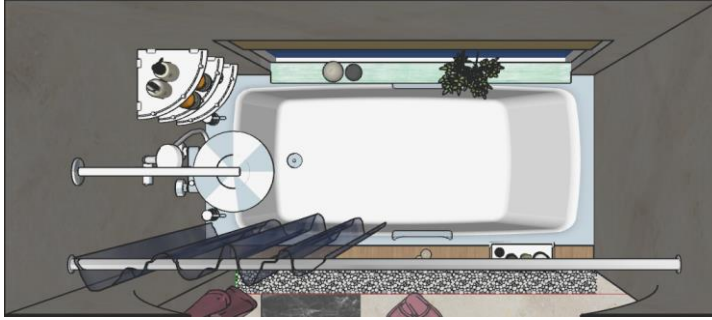


Design Visuals: Shower Area

Shower area combined with bathtub, to rinse and wash and drain in the same place in this compact bathroom space.

With a large window to provide a panoramic view while relaxing. To see the commotion and be away from it while experiencing the calm from the place high above in condominium.

The stone pebbles have been placed over the trench drain to drain out the water once one steps out of the shower. The soft tones of the pebbles give a spa room feel.



Design Visuals: Toilet Area

WC placed at the end of the bathroom, next to the washbasin area for easy access.

A different color tiling denotes a separate space for the toilet area.

Once the user sits on the wc they know they are on a segregated space..

The dustbin and toilet paper roll are places close by for easy access.



Design Visuals: Basin Area

The basin area is located in the center of the wall with the wc and storage cupboard on both sides.

The overhanging designer lighting adds to the backlight wall hung mirror of the basin

There is plenty of storage space in the washbasin cabinets and atop the counter - to keep everyday toiletries within reach.



Design Visuals: Optional Images

Plenty of storage space given in the bathroom.

Designer lighting to go with the bathroom furniture and create a good interior mood while user the space

Laundry area also designed in order to make full use of the 6 sq.m bathroom space, along with the top shelf for easy access of detergent and other products.



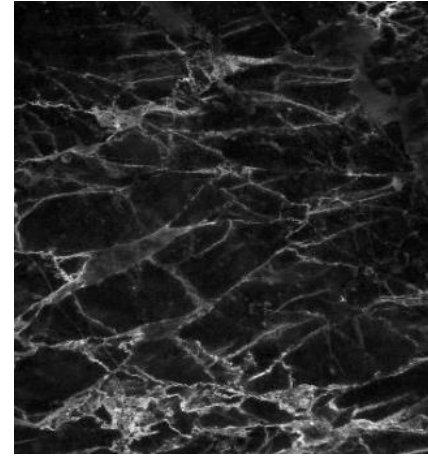
Specifications: Colors, Materials and Finishes

Light colored material used to make the space look big

Dark tiling used at spaces to define areas without providing any special equipment like screens etc



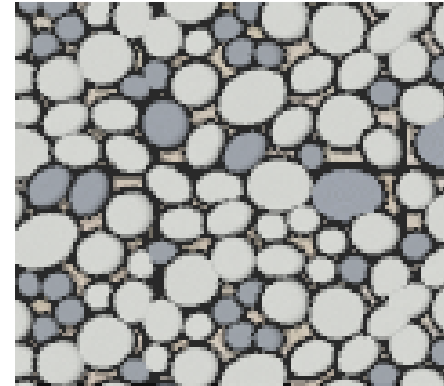
Marble beige



Marble black



Laminated wood



Pebbles

**American
Standard
Products
Specified**

